

Does the distribution box need to be fixed

REINFORCED VIRGIN PVC TRUNKING

Superior Crush Resistance



37.6MPA
Tensile Strength



2856MPA
Elastic Modulus



9.8KJ/M²
Impact Strength



1.54G/CM
Density

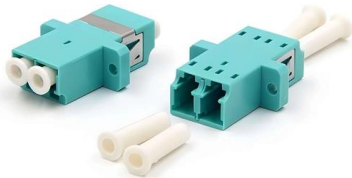




Does the distribution box need to be fixed

Distribution box

Yet the distribution box is a highly complex component that not only ensures safe power distribution, but is also responsible for protection in an emergency. In this article, you will learn everything you need



The installation requirements for the distribution box

Learn how to install a distribution box safely and correctly. Covers wiring, placement, standards, and expert tips for a compliant setup.



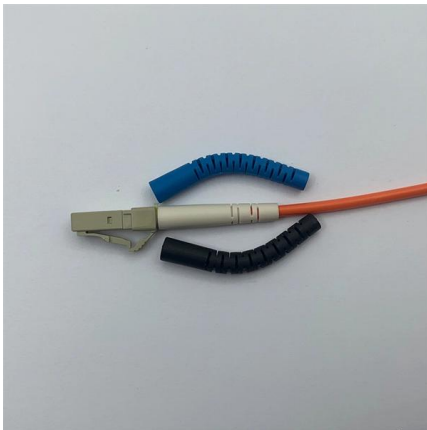
Installation problems and solutions of distribution box

The distribution box has the characteristics of small size, simple installation, special technical performance, fixed location, unique configuration function, not limited by the site, relatively common



Septic Tank Distribution: All You Need to Know about

Troubleshooting Common Distribution Box Issues
' - Learn about the most common problems that can occur with distribution boxes and how to fix

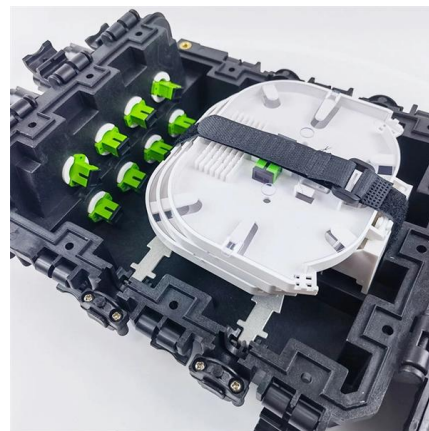


Understanding Distribution Boxes: A Comprehensive Guide

A distribution box, also known as a power distribution box or electrical distribution box, is used to distribute electrical power safely to multiple

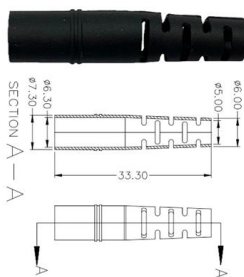
Grounding System Installation Standards for Distribution Boxes and

Why Distribution Boxes Need Special Attention
Your distribution box is mission control for electricity in any building. When grounding fails here, it's like having a spaceship without a heat



Distribution Boxes Explained: Types, Functions, and

Learn about distribution boxes, their types, functions, and safety features to ensure efficient and secure electrical power distribution in any building.





The Complete Guide to Distribution Box: Installation, Types & More

Calculate the total electrical load and add 25% for future growth. Consider physical space requirements and accessibility needs when selecting enclosure size. What's the difference between

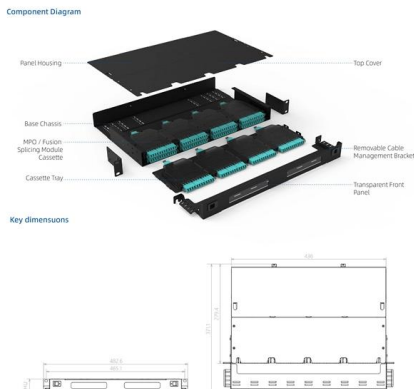


Distribution box

In this article, you will learn everything you need to know about installing, expanding or replacing a distribution box - from the legal basis to practical implementation.

The Importance of Distribution Boxes in Electrical Systems

If you need to add new circuits or appliances, you may need to upgrade your box to ensure that it can handle the increased demand.



Understanding Distribution Boxes:A Comprehensive Guide

A distribution boxes is an essential device that manages the safe and efficient flow of electrical power throughout different areas of a building or facility.



Requirements And Specifications For Installation Of

The bottom edge of the distribution box is usually between 1.5 meters and 1.8 meters above the ground, which is convenient for operation and



What are the common problems of distribution boxes?

In modern power systems, distribution boxes are the core equipment for power distribution and control, and their stable operation is crucial to ensuring

How to Install a Cable Distribution Box Safely and

In modern electrical systems, cable distribution boxes (also known as electrical distribution boxes or distribution boxes) play a crucial role as the key



An Extensive Library of Self-Developed Products



Requirements And Specifications For Installation Of

In flammable and explosive environments, explosion-proof distribution boxes should be selected and explosion-proof treatment should be carried out.



What are the common problems of distribution boxes?

The main problems encountered with distribution boxes include installation and layout problems, electrical connection and grounding problems,

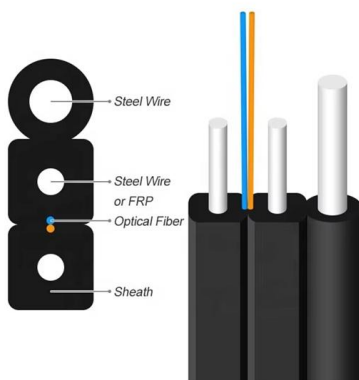


Electrical Distribution Box Installation Mistakes

The Electrical Distribution Box is a very important part of the power system, improper installation will cause a lot of danger and loss. Here are some things that go

Cautions and Requirements for Installation of

After installation, the residue in the distribution box should be cleaned up. When the distribution box is installed and constructed, some safety operation items have



Distribution Box Guide

Types of Distribution Boxes Classification by Structure Distribution boxes come in various shapes and sizes depending on their intended use. Let's break down some common types based on



How to Install a Distribution Box--A Comprehensive

What is a Distribution Box? First of all, you need to have a simple understanding of the definition of a distribution box, and make it clear which kind

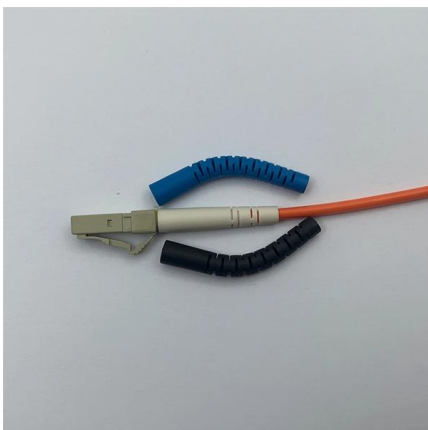


Distribution Box Installation: A Complete Guide to Safe

The distribution box, often referred to as a breaker box, fuse box, or electrical panel, is a critical component of any electrical system. It acts as the central hub for

How To Distribute The Distribution Box Reasonably?

2. For smaller distribution boxes, wood bricks can also be embedded at the installation site (according to the location of the installation holes at the four



How to solve and prevent the failure of the distribution

To sum up, qualified construction and maintenance operations, in conjunction with standards and safety measures, can effectively prevent and solve distribution box



Cautions and Requirements for Installation of

2. The pipes entering the distribution box must be fixed with locking nuts. 3. If the distribution box needs to be opened, the edge of the hole should be smooth and



How to Install a Distribution Box--A Comprehensive

Distribution Box Installation: Put the distribution box on the installation surface, and align the position of the expansion bolts and tighten the screws. This



The installation requirements for the distribution box

Introduction Understanding The Components of A Distribution Box
Selecting The Right Distribution Box
Site Preparation and Location Requirements
Electrical Connections and Wiring
Compliance with Standards and Regulations
Conclusion
Proper installation of a distribution box isn't just a technical requirement. It's a vital step in ensuring the safety and efficiency of your entire electrical system. Following best practices reduces the risk of electrical fires, power outages, and other hazards, protecting your property and keeping everyone safe. If you're looking for a reliable, See more on eabel Published: Feb 7, 2025
hielectrics



How to solve and prevent the failure of the distribution

During the construction and installation process, the methods to solve and prevent the failure of the distribution box include: Quality inspection:



Make sure the



What is a Distribution Box? - A Comprehensive Guide

A distribution box organizes and controls power flow, ensuring safety and efficiency in electrical systems.



The Complete Guide to Distribution Box: Installation, Types & More

Understanding the key components of a distribution box helps you make informed decisions about installation and maintenance. Each element plays a specific role in ensuring safe

Understanding Distribution Boxes: A Comprehensive Guide

Learn what a distribution box is, its types, and how to choose the right one for your project. Includes clear examples and expert tips.



What Is a Distribution Box?

What to Look for When Choosing a Distribution Box If you're going to buy a distribution box, there are several things you should look for. You should



How to Install a Cable Distribution Box Safely and

Sufficient pre-installation preparation is the basis for the safe and smooth installation of the distribution box, mainly including the following aspects:

Contact Us

For datasheets, pricing, or custom high-speed optical interconnect solutions, please visit:
<https://www.syropy.com.pl>