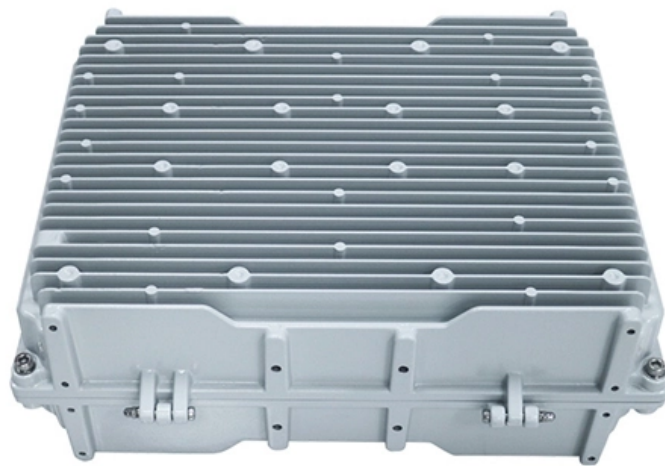


# **Does the core switch support routing**





## Overview

---

Core Switches support various routing protocols, such as OSPF (Open Shortest Path First) and BGP (Border Gateway Protocol), enabling intelligent selection of optimal paths for data forwarding based on routing tables. A core switch is a high-capacity, high-performance Layer 3 switch positioned at the physical backbone of an enterprise network. Engineered to aggregate massive volumes of data from distribution switches, it provides ultra-low latency and maximum throughput to ensure uninterrupted routing and packet. Supports port speeds from 10G to 400G+, with large buffers and wire-speed forwarding. Includes dual power supplies, hot-swappable modules, link aggregation (LAG), and support for HSRP/VRRP. The primary transmission and routing of data signals take place at the core layer only. This service is essentially provided to us as a single CAT5 cable from a Cisco router that handles the failover to VDSL (public IP failover too).



## Does the core switch support routing

---



### Microsoft 365 Roadmap

The Microsoft 365 Roadmap lists updates that are currently planned for applicable subscribers. Check here for more information on the status of new features and

### Core Switch vs Normal Switch: Key Differences Explained

What are the Differences Between the Core Switch and Normal Switch? By fiberlife. Posted on January 17, 2025 Networking infrastructures rely

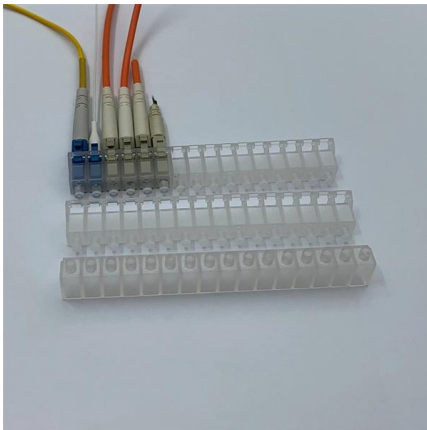


### Understanding the Core Switch: Key Differences and Uses

A core switch is a high-capacity network switch that functions as a network's backbone or core layer. It's responsible for accurately routing

### Introduction to Core Switch Configuration

The most important purpose of the layer 3 switch is to speed up the data exchange within the large LAN, and the routing function is also for this purpose. It can do one route and multiple forwarding.



### What is a router?

\* A network switch forwards data packets between groups of devices in the same network, whereas a router forwards data between different networks. Free tools

### Core Switches and Normal Switches: A Practical

In modern network infrastructure, switches play a pivotal role in connecting devices and facilitating data transfer. However, not all switches are



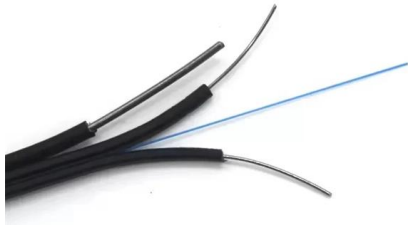
### What is Core Switch and How to Choose?

Discover what a core switch is and learn how to choose the right one for your network. Explore key features in selecting a core layer switch. Make



## OSPF implementation on Core Switch

So let's say I have just 2x Cat4k or 6k that I would like to enable OSPF between (one acts as Core switch where routing for access switches is done and other will be used for access and

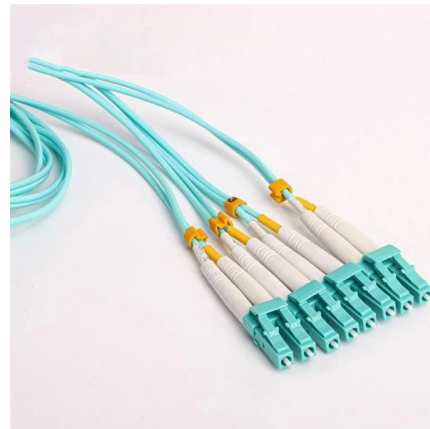


## Internet routing via core switch instead of routers?

A 5406/5412 is not appropriate for internet edge routing. You can move routing to a firewall instead of a router, or get a bigger beefier switch, but 5406/5412 do not have enough L3 resources or security

## What Is a Core Switch? Network Backbone Architecture Guide

To achieve backbone speeds, a core switch must operate at Layer 3 of the OSI model, bridging the gap between traditional MAC-based switching and IP-based routing.



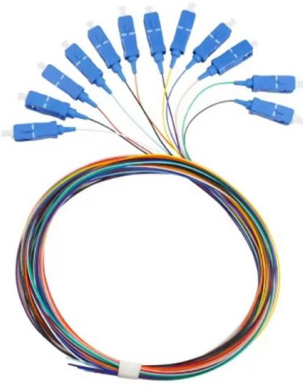
## Understanding Core Switch: What It Is and How to

In the realm of system networking, three key types of switches are frequently mentioned: access switches, aggregation switches, and core switches.



## Core Switches: The Pillar of Network Infrastructure

Consider the switch's capacity to handle additional devices and increased data traffic. Conclusion Core switches truly are the heartbeat of any



### What Is a Core Switch in a Network?

Define the core switch--the central, high-speed backbone required for aggregating and routing massive volumes of enterprise network traffic.

### Cisco Core vs Access Switches: Key Differences

Meanwhile, core switches start in the gigabit range and go up quickly. Core switches are typically fiber optic devices, and it's not uncommon to see them support rates



### What Is a Core Switch?

Enables IP routing between VLANs, subnets, and security zones, with advanced routing protocols. Includes dual power supplies, hot-swappable modules, link aggregation (LAG), and support for



## Core Switch vs Normal Switch: Key Differences Explained

While both core and normal switches play crucial roles in maintaining efficient data flow, their functionality and applications vary significantly. This guide

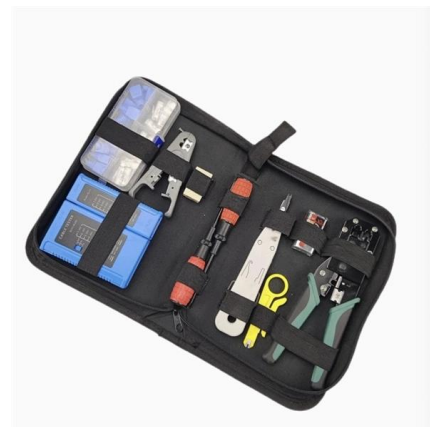


### Features and Applications of Core Switches

Core Switches support various routing protocols, such as OSPF (Open Shortest Path First) and BGP (Border Gateway Protocol), enabling intelligent selection of optimal paths for data

### What Is a Core Switch?

A core switch is the backbone of a large-scale network, designed to handle massive volumes of traffic with ultra-low latency and maximum reliability. Sitting at the top of the hierarchical model, core



### As two of the largest forces in equity markets -

Bill Ackman (@BillAckman). 150 replies. As two of the largest forces in equity markets -- growing index ownership and increasing amounts of capital controlled by extremely short-term

### What Is a Core Switch in Networking?



Unlike access switches, which connect directly to end-user devices, the core switch focuses on aggregating and routing traffic between other



### News

Conclusion Incorporating these core switch insights into your network engineering repertoire can significantly improve your operational efficiency and effectiveness

### Core Switch vs. Distribution Switch vs. Access Switch

These data switches are responsible for routing and data switching at the core layer of the network. The data routed and switched by the core switch is carried



### routing at the distributionCore switch

The network diagram is attached (Cores switches are 4506): My question is what is the best solution for users connected through Core2 switch to



## Core Switch vs. Distribution Switch vs. Access Switch

Comprehensive guide to Core, Distribution, and Access Switches. Roles in the network and important parameters explained.



### What Is a Core Switch in a Network?

The core switch aggregates traffic from multiple mid-level network devices, requiring immense processing power to prevent bottlenecks. It performs high-speed routing, deciding the

## Contact Us

---

For datasheets, pricing, or custom high-speed optical interconnect solutions, please visit:  
<https://www.syropy.com.pl>