

Does exposed ceiling wiring require cable trays





Overview

Due to their exposure to the open air because of the cable trays, the wires contained within need a very durable outer covering. The regulations dictate that the cables must either be Type TC (also known as Tray Rated) or must be metal-armored (Type MC). Metal raceways, cable trays, cable armor, cable sheath, enclosures, frames, fittings, and other metal noncurrent-carrying parts that are to serve as grounding conductors, with or without the use of supplementary equipment grounding conductors, shall be effectively bonded where necessary to ensure. The mechanical and electrical characteristics, tests, certifications, overall quality management, recommendations mentioned. This is a description of how to select, install, and support these metal or plastic frames, on which electrical wires are installed. We are planning to use cable tray above a solid ceiling to install sub-circuit cables, but I'm not so sure it violate NEC (since cable tray is not accessible due to solid ceiling). Interested in this topic?

By joining CR4 you can "subscribe" to this discussion and.



Does exposed ceiling wiring require cable trays



Data-communications cables in air ducts and plenums

Listing requirements for plenum cable All data/comm plenum cables are listed for use in "ducts, plenums, and other spaces used for environmental air." All plenum



Installation of cable tray above solid ceiling

Dear Sir, We are planning to use cable tray above a solid ceiling to install sub circuit cables, but I m not so sure it violate NEC since cable tray is not accessible due to solid ceiling .

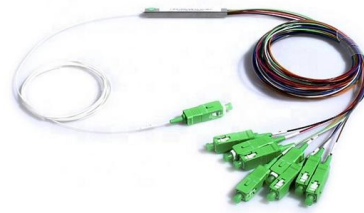
Best Practice Guide to Cable Ladder and Cable Tray Systems

This guide covers cable ladder systems, cable tray systems, channel support systems and associated supports intended for the support and accommodation of cables and possibly other electrical



Wiring and Cable Support.

Section 725.143 and 800.24 also require the support of cables to be in accordance with NEC ® 300.11 which provides rules on when a cable can be strapped to the



Cable Tray Technical Guide A practical guide to product selection and

Cable tray is considered to be a system. It must provide continuous support for cables, and the electrical continuity of the cable tray system must be maintained.

Exposed Electrical Wiring: Code and Practices

Learn about exposed electrical wiring, such as NM or Romex, and whether it is allowed by code. Find out if exposed wiring is allowed in your home.



Webit Cabling



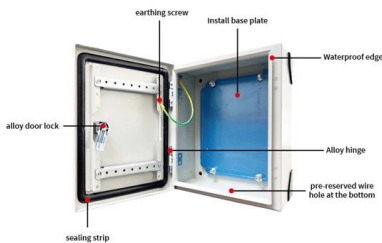
Structured Cabling for Exposed Ceilings , Industrial Guide Towner

Complete guide to structured cabling for exposed ceilings in industrial-style offices. Tips, standards, and best practices for low-voltage.



Types of Cable Containment Systems: Trays, Trunks,

Discover the main types of cable containment systems--trays, trunking, and conduits--and learn how to choose the right solution for safe,



Conduit, trunking and cable trays

Such cables must be securely supported by cable clips, cable tray or other fixings at suitable intervals. [Note: although flexible cords must not be used as fixed wiring this clause covers Appliance

GUIDE CABLE TRAYS TECHNICAL

NEMA VE 1-2017 Specifies requirements for metal cable trays and associated fittings designed for use in accordance with the rules of Canadian Electrical Code, Part I and the National Electrical Code®



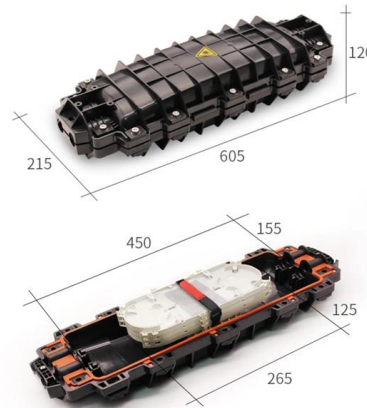
Prevent Fire and Electric Hazards When Cable Trays Used

If not designed and installed properly, wiring inside cable trays may pose hazards such as fire, electric shock, and arc-flash blast events.



Protection of cable through metallic structures

Wherever sheathed cables are passing through a metallic structure, like steel framing, switchboard entries or metal enclosure or cable tray, the entry hole shall be bushed or shaped to protect the cable



NEC Article 392 Guide: Ensuring Compliance for Cable

The short answer is no. Due to their exposure to the open air because of the cable trays, the wires contained within need a very durable outer

Tray-Rated Cable 101

When should you use a tray-rated cable? Tray cable is applied in many different industrial plant expansions, automotive plants, tray wiring, wind energy, machine tool, forestry equipment, oil and



Pre-Terminated Patch Panel

- Standard 19" width
- Max 144 fibers in 1U
- Ultra-High Density Ready



Dual-slit, easy install & maintain



Lightweight ABS 40% UL94V-0



Premium sheet metal with multi coating

Cable Tray Systems in Ducts, Plenums and Other Air Handling Space

Cable tray is a mechanical support system just as strut is a mechanical support system. To install a metal support system in an area rarely presents a fire safety problem. It is the cables that are being



1910.305

Metal raceways, cable trays, cable armor, cable sheath, enclosures, frames, fittings, and other metal noncurrent-carrying parts that are to serve as grounding conductors, with or without the use of



Conceal wiring for safety in open-ceiling environments

Many large retail stores and manufacturing plants require the distribution of communications and power wiring in open-ceiling environments. Because these

Cable Tray Questions , Cable Tray Institute

Answer: The NEC does not have a specific installation clearance, but indicates in section 318-6 (b) that cable trays should be exposed and accessible. Telecommunications standard TIA/EIA-569



Cable Tray Installation

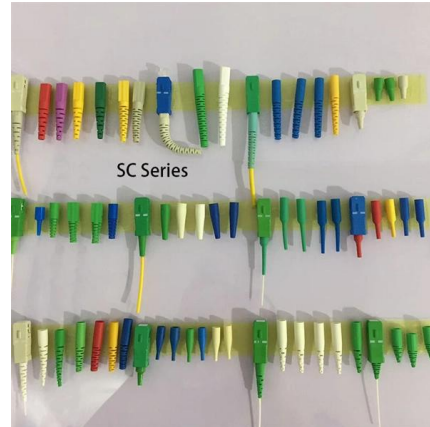
Learn everything about cable tray installation with our complete guide. Discover types, steps, and safety tips for efficient electrical cable management.



Annex I



All PIC cable trays shall be equipped with metallic cover, whilst non-PIC cable trays not required cover from safety point of view. The Non-PIC sensitive trays are covered for Electromagnetic compatibility

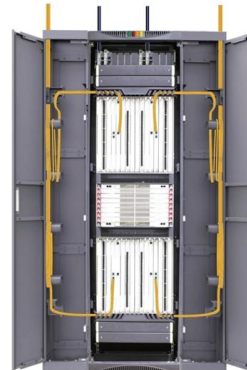


What are Cable Trays? Everything you need to know

Discover everything about cable trays in industrial settings: types, benefits, installation tips, and compliance with NEC and fire resistance standards.

Conceal wiring for safety in open-ceiling environments

Instead of using ladder-tray systems, which can allow cables to droop between the rungs, install solid or ventilated-bottom cable trays, also known as channel or



Types of Cable Typically Used in Cable Tray

Types of Cable Typically Used in Cable Tray The purpose of a cable tray system is to support, route, and protect cable as part of the cable management system.



Cable Tray Technical Guide A practical guide to product selection and

Cable Tray Technical Guide A practical guide to product selection and installation This guide for engineers and installers has been developed by ABB as a practical reference regarding cable tray



Contact Us

For datasheets, pricing, or custom high-speed optical interconnect solutions, please visit:
<https://www.syropy.com.pl>