

# Does an optical port necessarily require an optical module

## Component Diagram



## Key dimensions





## Overview

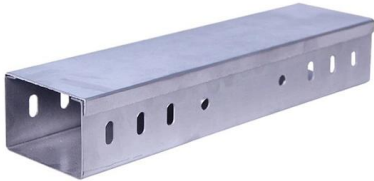
---

Sometimes the optical module is replaced by an electrical interface module that implements either an active or passive electrical connection to the outside world. Many different forms of optical modulation and multiplexing have been employed in optical modules.



## Does an optical port necessarily require an optical module

---



### Things You Need to Know About Optical Modules and

Optical module: A photoelectric converter consisting of optoelectronic components (transmitter and receiver), functional circuit, and optical ports. To put

### What Is an Optical Module and Its FAQs (V300)

Fundamentals of an Optical Module As an important part of fiber-optic communication, an optical module is a photoelectric converter which converts electrical signals into optical signals and



### Understanding Optical Modules: Working Principles,

Explore the working principles, structures, and performance metrics of optical modules, essential components of optical fiber communication systems. Learn

### News

Optical ports, like electrical ports, are built-in and external, so you don't have to worry about these issues. Without optical modules, there may be built-in optical modules.

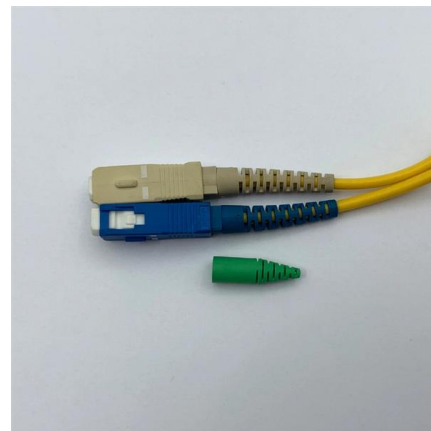


### **How to choose an optical fiber link and an SFP module?**

For example, SFP modules (Small Form-Factor Pluggable) are among highly demanded types and have embedded transmitter and receiver. They enable to

### **Optical module - A comprehensive exploration**

The optical module is one of the core devices of the optical communication system, and its development has a vital impact on its related



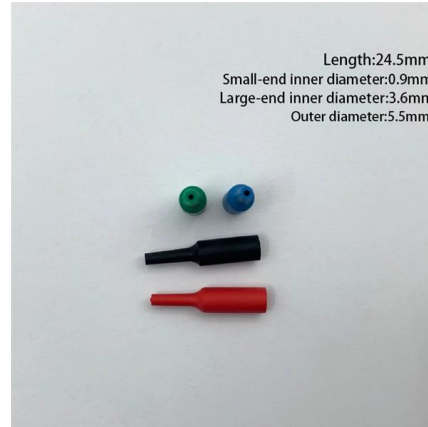
### **The difference between electrical interface module and optical module**

According to the actual network scenario, the electrical interface module is more widely used in the architecture of copper cable cabling; In the fiber optic cabling architecture, optical modules better



## What Is an SFP Optic Module and How Does It Work

SFP optic modules convert electrical to optical signals for fast, long-distance data transfer. Hot-swappable, versatile, and compatible with various

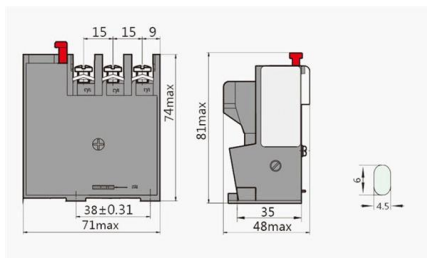


## What is the difference between electrical and optical port

The optical port is the physical interface for connecting fiber optic cables, and the optical ports on the module are usually of several types, such as

## Differences Between Electrical Port Modules And Optical Port Modules

In fact, electrical port modules deliver performance comparable to that of optical port modules while boasting unique advantages. This article will share relevant knowledge and key differences between



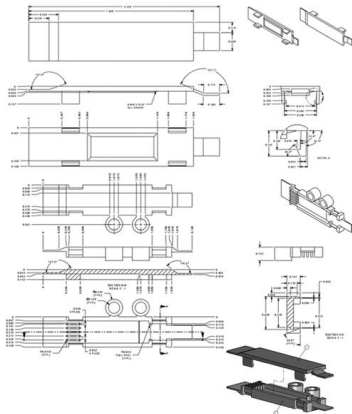
## The Rise of Co-Packaged Optics: A Deep Dive into CPO

A CPO optical module integrates optical and electronic components to boost data center speed, efficiency, and bandwidth while reducing power use.



## The Ultimate Guide to 1G SFP Modules: What They Are

The magic behind a 1G SFP module lies in its ability to convert electrical signals into optical signals and vice versa. These modules use fiber

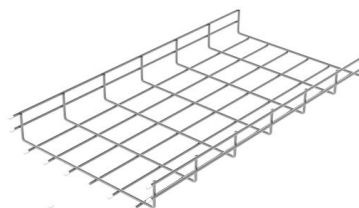


### Fiber Optic Connector vs Ethernet Port, what is the difference?

2. To use the switch's 10-Gigabit optical port, you need to plug in SFP+ 10-Gigabit optical module. The 10-Gigabit dual-core optical module

## What is an SFP Module? An Ultimate Guide , SFP

How Does an SFP Module Work? An SFP module works by transforming electrical signals from network devices into optical signals for



### Optical module

An optical module is a typically hot-pluggable optical transceiver used in high-bandwidth data communications applications. Optical modules typically have an electrical interface on the side that



## The Most Comprehensive Guide Of Optical Modules

Explore the ultimate guide to optical modules. Learn types, functions, performance metrics & how to choose the right module for your fiber network.

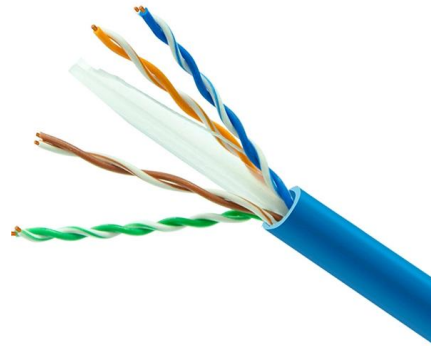


### Differences Between Electrical Port Modules And Optical Port Modules

Optical modules are indispensable components in enterprise network deployment. They can be categorized into different types based on transmission rate, form factor and interface type, among

### What Is An Optical Module?

An optical module converts electrical signals to light for fast, reliable data transfer in networks, essential for cloud computing, telecom, and data centers.



### What Is an Optical Module

The side with an L-shaped notch close to the connector is the top of a QSFP+ optical module, as shown in Figure 9-6. When connecting a QSFP+ optical module to a port, keep the top side upward. Do not



## Understanding SFP Port: A Guide to Gigabit Ethernet

Q: How does an SFP module work? A: An SFP module is a small form factor pluggable transceiver inserted into an SFP port. It converts electrical

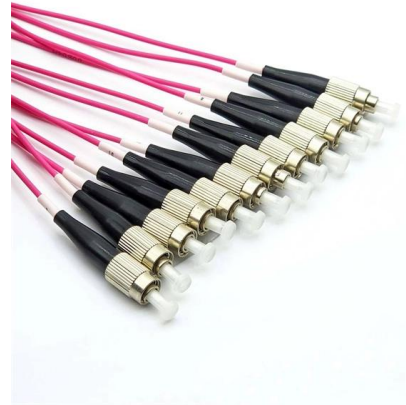


## Understanding Optical Modules

Generally, an optical attenuator is required if an optical module supporting a transmission distance longer than 10 km is used together with short optical fibers.

## What Is an Optical Module and Its FAQs (V300)

As an important part of fiber-optic communication, an optical module is a photoelectric converter which converts electrical signals into optical signals and vice versa. An optical module



## How to Install and Remove Optical Modules Safely

Maintaining Port Integrity: Forcing a module or using excessive pressure can damage the expensive SFP cage (port) on your switch or router.



## What is Optical Transceiver: A Beginner Guide (2024)

What is an Optical Transceiver? An optical transceiver, also known as a fiber optic transceiver or optical module, is a small packaged device that uses

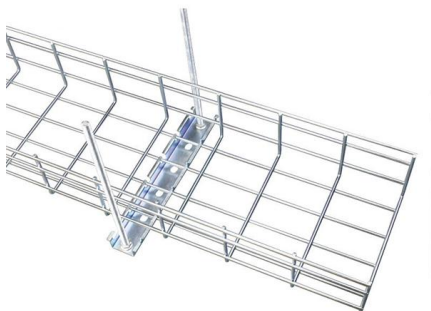


## What is SFP Module? An Ultimate Guide (2024)

An SFP module is a small, pluggable optical transceiver that fits into the SFP port of a networking switch or other device. Sometimes, it is known as

## How to Choose Optical Modules Correctly?

Optical modules are pivotal components in optical fiber communication systems, operating at the physical layer--the foundational level of the OSI model.



## What is the difference between electrical and optical port

Optical modules are essential components in enterprise networking. According to different rates, encapsulation types and interface types, optical



## Contact Us

---

For datasheets, pricing, or custom high-speed optical interconnect solutions, please visit:

<https://www.syropy.com.pl>