

# **Does a PoE switch need configuration**





## Does a PoE switch need configuration

---

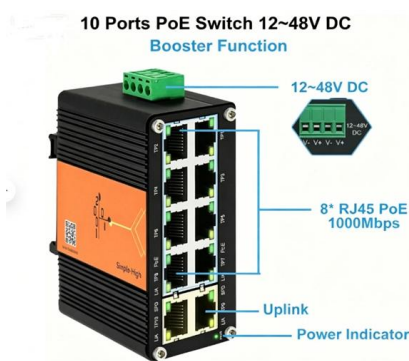


### PoE Switches 101: An Essential Guide

PoE Switches 101: An Essential Guide  
Technologies such as Power over Ethernet (PoE) have simplified the setup and management of surveillance

### PoE Switch Tutorial: Simplifying Network Power

In most cases, connecting a PoE switch to a router doesn't require specific configurations on the router itself. It's simply a plug-and-play setup.



### What Is Poe Switch: Everything You Need to Know

What is a Poe Switch and How Does It Work?  
Want to simplify your network cabling and reduce costs? Look no further than Power over Ethernet

### What Is a PoE Switch for Surveillance Systems: 2025

Discover what is a PoE switch, how it powers and connects security cameras, and why it's essential for efficient modern surveillance setups.



### Cisco PoE Switch: The Ultimate Guide to Gigabit

Check PoE Configuration: Ensure that Power over Ethernet (PoE) settings are properly done on the switch. Use the management interface of the

### PoE Feature Overview and Configuration Guide

PoE is appropriate for devices that have a low power consumption--PDs (Powered Devices) such as wireless access points, IP telephones, Webcams, and even other Ethernet switches. The benefits of



### My Guide to PoE Network Switches and Their Applications

PoE switches inject power into Ethernet cables together with the data. All of this can be done with ordinary RJ45 patch cables. They have different power classes, so I need to double check



## The Ultimate Guide to Power Over Ethernet Switches:

Discover everything you need to know about PoE switches in our ultimate guide. Learn how Power over Ethernet simplifies network deployment



### Configuring PoE

Election of a new active switch does not affect PoE operation. The active switch keeps track of the PoE status for all switches and ports in the stack and includes the status in output displays.

### Configuring Power over Ethernet

When you make PoE configuration changes, the port that are being configured drops power. Depending on the new configuration, the state of the other PoE ports and the state of the power budget, the port



### How To Configure PoE On A Network Switch?

Configuring PoE (Power over Ethernet) on a network switch enables you to deliver power and data simultaneously to compatible devices. This simplifies installation and management of



### What Is PoE Switch? How Does It Work?

PoE switches are highly scalable, allowing new devices to be added without the need for new power lines. Expanding your network becomes a simple plug-and-play



### Setting Up a Power over Ethernet (PoE) Network: A Comprehensive

By considering these factors, you can choose a PoE switch that meets your network's needs and provides a reliable and efficient way to power your devices. Can I use Power over Ethernet (PoE)

### What is a poe switch and how to select it?

A PoE switch is a device that combines the functionality of a switch and a power source in one. It has multiple Ethernet ports that can be used to



### What is a PoE Switch

Deciding whether to use a PoE switch or a PoE injector comes down to how many PoE devices you need to connect. Individual PoE devices, such as



## Blog: An Ultimate Guide to PoE Switches , IO by HFCL

Discover PoE switches, their types, and how they simplify network setups. Explore the advantages of Power over Ethernet technology in this ultimate blog.



## PoE, powered device, and switch , PoE , PoE Configuration Guide

PoE operates the same whether or not the switch is configured as a standalone or as a stack. The power budget is per switch and independent of the switch members in the stack.



MTP MPO SC-Type Fiber Adapter



## Power over Ethernet Configuration Guide, Cisco Catalyst IE3100

Power over Ethernet Before changing the power budget, the minimum power requirements for the switch need to be considered as well. Please refer to the datasheet for your switch for more



## What is a PoE Switch? Everything you Need to Know About PoE Switches

What is a Power over Ethernet (PoE) Switch? Power over Ethernet (PoE) switches are revolutionizing network setups by delivering both data and power through a single Ethernet cable.



## Installing and Troubleshooting Power over Ethernet (PoE)

A guide to how PoE works, how to select compatible equipment, and what you need to be aware of and test for when installing or troubleshooting PoE.



## How To Configure PoE On A Network Switch?

The PoE Configuration Process: A Step-by-Step Guide Here's a detailed guide on How To Configure PoE On A Network Switch?: Identify PoE-Capable Devices: Ensure that both the network

## POE Switch: Everything You Need to Know About

In this article, we will explain everything you need to know about PoE Switch, including its definition, features, benefits, applications, types,

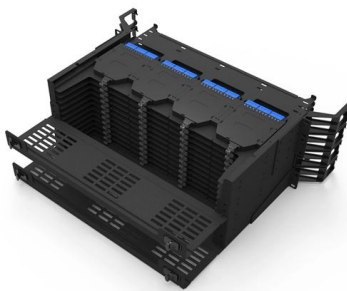


## Power over Ethernet Configuration Guide, Cisco Catalyst IE9300

Power over ethernet Configure PoE+ and UPoE+ Feature History: PoE Power over ethernet Power over Ethernet (PoE) is a technology that enables Ethernet cables to deliver both

## What is a PoE Switch? [Comprehensive

What is a PoE Switch? A Power over Ethernet (PoE) switch is a specialized networking device that not only routes data between networked



### **PoE Switches Explained: All the Important Facts You**

The Core Advantages of PoE Switches Compared with traditional Ethernet switches, PoE switches have the following advantages: 1. No additional power wiring

### **Application Scenarios & Configuration Challenges of Switches with**

The functional configuration of Switches with PoE may include power configuration, operating standard configuration, priority configuration, etc. These configurations need to be



### **PoE Configuration Guide**

These sections provide information about the conditions required for a PoE capable switch to provide power, how the PoE-capable switch identify the power requirement of the powered device, and how



## HPE Networking Instant On Switch 24p Gigabit CL4 PoE 4p SFP

The HPE Networking Instant On Switch 1930 series delivers advanced functionalities including customizable like VLANs, link aggregation, Spanning Tree Protocols, and IEEE 802.1X access



### A Comprehensive guide to PoE Switches and their Uses

Choose a PoE switch if you need to power and connect IP cameras, VoIP phones, access points, or IoT devices without extra cabling. Choose a regular switch if all

### Unlocking the Secrets of PoE Switches

PoE++ supports high-power devices like LED panels, conferencing tools, and compact computers, but not all devices need this level of power. Can I



## Contact Us

---

For datasheets, pricing, or custom high-speed optical interconnect solutions, please visit:  
<https://www.syropy.com.pl>