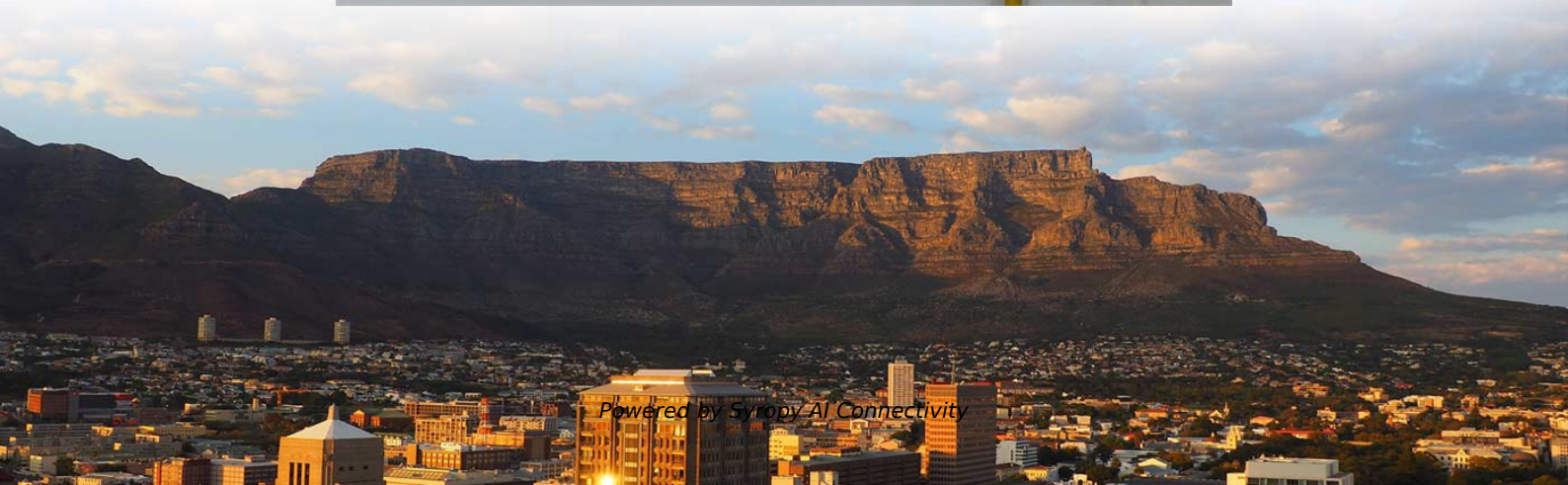
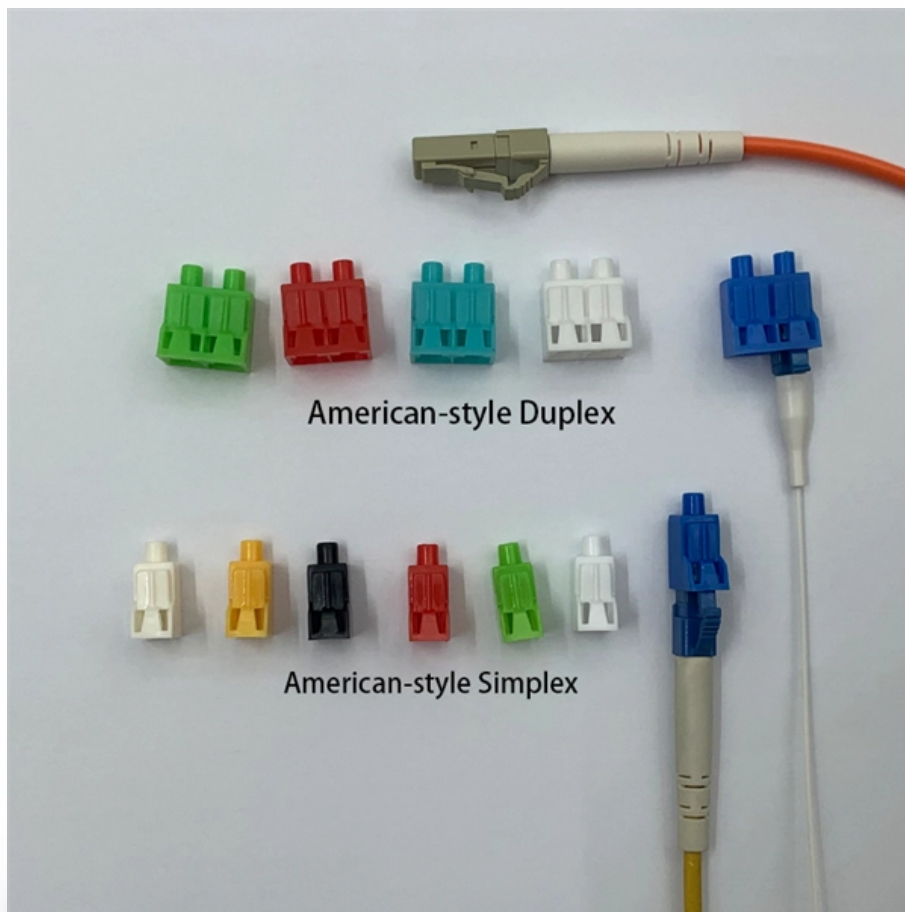


# Do construction site electrical distribution boxes need residual current protection





## Overview

---

All final sub-circuits of construction wiring must be protected at the switchboard where the sub-circuits originate by a residual current device (RCD), with a maximum rated residual current of 30mA, that operates in all live (active and neutral) conductors. In AC systems, additional protection by means of an RCD with a rated residual operating current not exceeding 30 mA shall be provided for: socket-outlets with a rated current not exceeding 32 A in locations where they are liable to be used by persons of capability BA1, BA3 or children (BA2, BA3). RCDs provide life-saving protection by detecting earth leakage currents and disconnecting the supply within milliseconds. The concept of RCD, or Residual Current Device, is an essential tool in construction. In layman's terms, it's a protective device designed to instantly cut off electricity when it detects imbalances in current flow.



## Do construction site electrical distribution boxes need residual current

---

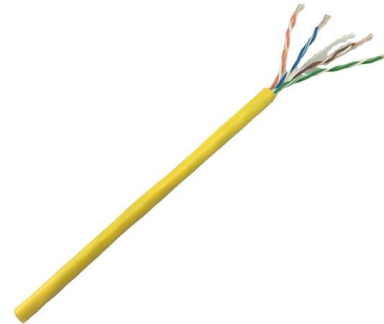


### What is a Residual Current Device? The Complete LED

Residual Current Devices (RCDs) are a cornerstone of modern electrical safety in homes and commercial or industrial settings. At LED Controls Ltd, we supply high

### RCD Protection: 18th Edition Wiring Regulations

Understanding the Importance of RCD Protection in the 18th Edition Wiring Regulations The 18th Edition Wiring Regulations are crucial for ensuring the



### Electrical practices -- construction and demolition sites

All final sub-circuits of construction wiring must be protected at the switchboard where the sub-circuits originate by a residual current device (RCD), with a



### HS437 Residual Current Devices Guideline

Always use residual current devices (RCDs) with portable electrical equipment, including extension cables. This guideline provides more information on RCD protection. These devices will reduce the



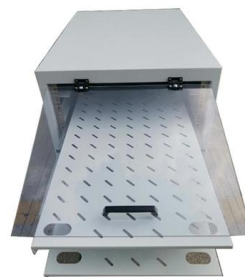
### **RCDs, PSOsAs, leads, cords, plugs and battery-operated equipment**

Residual current devices (RCDs) construction site must have protection against electric shock. One way to provide protection against electric shock is to ensure that all e stantly monitors the electric current



### **Do You Need RCD Protection for All Circuits?**

Do you need RCD protection for lighting circuits? The short answer is yes - RCD protection is mandatory for all lighting circuits in commercial buildings, and all



### **Microsoft Word**

A residual current device (RCD) is an electrical safety device designed to immediately switch off the supply of electricity when electricity 'leaking' to earth is detected at harmful levels. RCDs offer high





## Residual current device

More and more laws, guidelines and standards have to be followed when constructing electrical systems, including the DIN VDE 0100-410 standard, which requires a residual current device (RCD)



## Understanding RCDs: Your Safety Net Against Electrical

Electrical safety is a paramount concern in both residential and commercial settings. Among the myriad devices designed to offer protection and

## 5 Ways Residual Current Devices (RCDs) Ensure Safety

What Does a Residual Current Device Do The residual current device function is to provide a high level of protection against electric shock. This is



## INSPECTION AND TESTING OF ELECTRICAL INSTALLATIONS: RESIDUAL CURRENT

The device monitors this difference, operates and disconnects the circuit when the residual current reaches a preset limit, the residual operating current ( $I_n$ ). RCDs are used to provide protection





## A complete guide to Residual Current Devices (RCDs)

Residual Current Devices are a key safety device designed to decrease the risk of electric shocks and electrical fires. They can be found in



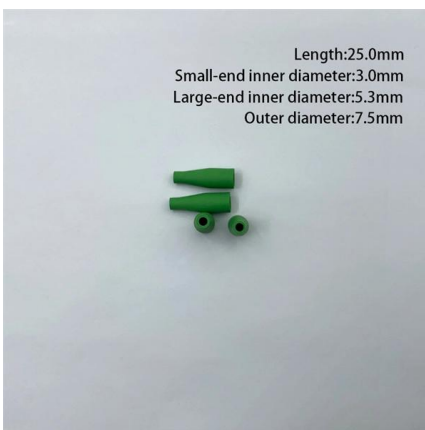
### What Is A Residual-Current Device (RCD): Protection Guide »

Protect your home with a Residual-Current Device (RCD). Discover how RCDs shield you from electrical hazards and enhance safety. Don't wait-learn more now!



### Temporary electrical wiring for construction sites

work requires electrical power for many purposes. However, exposure to weather, frequent relocation, rough use and other conditions not normally encountered with conventional wiring systems



### How to Make Temporary Power Safer on Construction

Temporary power systems are essential for construction projects, yet they often introduce serious safety risks. Loose wiring, exposed connectors, and



## Residual current devices

A residual current device, or safety switch, protects you from the most frequent cause of electrocution - a shock from electricity passing through the body to the earth. It can also provide some protection



## Residual current devices (RCDs) - what electricians

Residual current devices (RCDs) play a crucial and often underappreciated role in protecting people in their homes. InstallerELECTRIC

## 070: Residual Current Device - RCD Protection

While a Residual Current Device provides personnel protection, it does not protect equipment or circuit conductors. No device or policy provides complete protection from shock. The RCD is one part



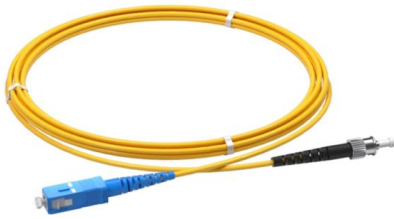
## RCD In Construction: Decoding The Essential Safety

In essence, the Residual Current Device (RCD) exhibits the crucial role it plays in maintaining safety on construction sites. By instantly interrupting



## What Is a Residual Current Device (RCD) and How It

Electricity is essential, but even a small leakage of current can lead to severe shocks, burns, fires, or fatal electrocution. One of the most effective safety



## Construction sites and the use of RLV, guidance on the use of residual

From a practical point of view, there is little need for RCD protection on 110 volt center tapped supplies. Without an RCD, disconnection times in the event of earth faults are likely to exceed

## RCDs on construction sites

All appliances, luminaires and other electrical equipment must be supplied from a circuit protected by an RCD. The RCD may be installed on a switchboard, incorporated in a socket outlet,



## Residual Current Devices - Where Should They Be Used?

RCD is a generic term that covers a range of residual current devices including RCBOs and RCCBs. Primarily an RCD is selected so that its residual



## Mythbusters #8: "Socket-outlets must be protected by a

A mobile unit (such as a site office) which has its own distribution inside with final circuits already protected by a 30 mA RCD, is an example of where the designer



## Do You Need RCD Protection for All Circuits?

Do You Need RCD Protection for All Circuits? Protecting your employees, customers and visitors is critical for meeting health and safety guidelines. Electrical safety

## Understanding Residual Current Devices (RCDs)

Understanding Residual Current Devices (RCDs) Protective devices used in electrical installations, RCDs are designed to quickly break electrical circuits, thus



## Contact Us

---

For datasheets, pricing, or custom high-speed optical interconnect solutions, please visit:  
<https://www.syropy.com.pl>