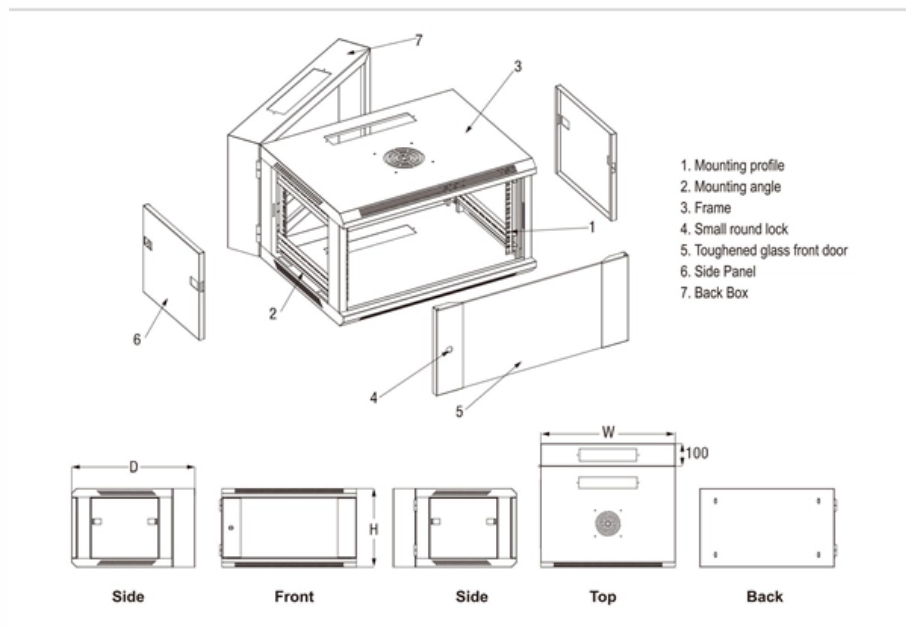


# Do cable trays need partitions





## Overview

---

Cable tray partition systems are essential components in cable management, designed to organize and separate various cables. This is a description of how to select, install, and support these metal or plastic frames, on which electrical wires are installed. The following pages address the 2014 National Electrical Code® requirements for cable tray systems as well as design solutions from practical experience.



## Do cable trays need partitions

---

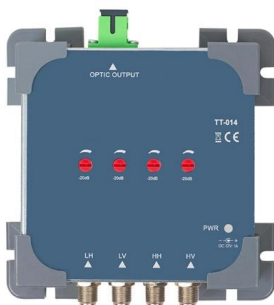


### Cable tray manual

INTRODUCTION The B-Line series Cable Tray Manual was produced by our technical staff. We recognize the need for a complete cable tray reference source for electrical engineers and designers.

### NEC Article 392 Guide: Ensuring Compliance for Cable

The short answer is no. Due to their exposure to the open air because of the cable trays, the wires contained within need a very durable outer



### Cable Tray Partition: Organize and Secure Cables Effectively

Cable tray partition systems are essential components in cable management, designed to organize and separate various cables. By implementing a cable tray partition, installations are kept

### Do You Really Need a Cable Tray? Here's How to Decide

The first thing to consider when deciding whether to use a cable tray is the number and density of the cables that need to be installed. If you're dealing



### **CABLE TRAYS GENERAL INFORMATION AND**

General information of Kiraç Metal Cable Trays and installation guide are arranged in accordance with IEC 61537 standards and this document has been prepared for

### **Explaining NEC Article 392 on Cable Trays**

NEC Article 392 explains cable trays, their components, appropriate wiring methods for cable trays, and instances where they are and are not



### **What are Cable Trays? Everything you need to know**

Discover everything about cable trays in industrial settings: types, benefits, installation tips, and compliance with NEC and fire resistance standards.





## Cable Tray Systems Explained: The Right Solution for

In this guide, we explain what cable trays are, the main types available, how to choose the correct size and duty rating, and what to consider when designing a



### Cable tray manual

Instead of large conduits, cable channel may be used very effectively to support cable drops from the cable tray run to the equipment or device being serviced and is ideal for cable tray runs involving a

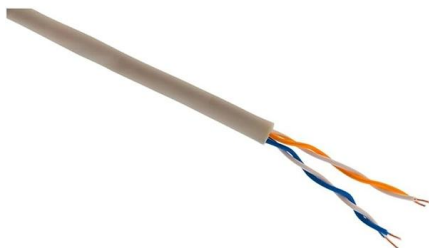
### Document DICOS

Cable trays made from mill-galvanized steel do not need to be touched up because they are not designed to be used in heavily corrosive atmospheres and have bare metal edges inherent in their



### Step-by-Step Guide to Cable Tray Barrier Installation

Learn the essential steps for cable tray barrier installation, including pre-planning, securing supports, and ensuring compliance with industry



### Cable Tray Questions , Cable Tray Institute



Do you have any information available for recommended installation clearances for this type of cable tray? Answer: The NEC does not have a specific installation clearance, but indicates in section 318-6

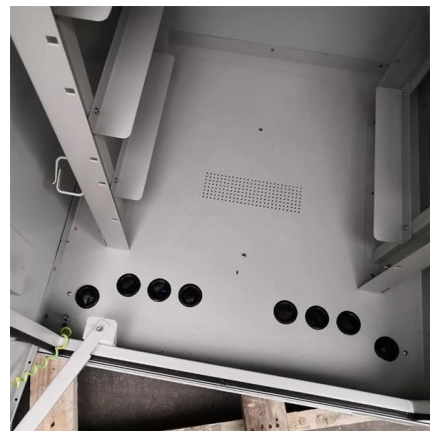


### Cable tray

In the electrical wiring of buildings, a cable tray system is used to support insulated electrical cables used for power distribution, control, and communication. Cable

### 100+ Essential Questions Answered About Cable Trays:

Discover over 100 expert answers about cable trays, covering key topics like material selection, load capacity, installation methods, and maintenance.



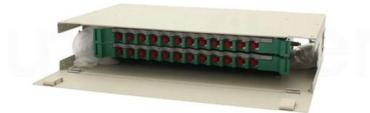
### Cable Tray Installation Rules (NEC 392) - Electrical Trader

Cable trays must remain in open, accessible areas to allow for proper maintenance. They should never be permanently enclosed, and if they pass through walls or partitions, proper fire



## Through Partitions and Walls , UpCodes

Cable trays can be installed across partitions and walls, as well as vertically through platforms and floors, in both wet and dry environments. However, these installations must comply with the



## Cable Tray Technical Guide A practical guide to product selection and

Cable Tray Technical Guide A practical guide to product selection and installation This guide for engineers and installers has been developed by ABB as a practical reference regarding cable tray

## Selecting Cable Trays: A Complete Guide for Cable

How to Choose the Right Cable Trays for Your Project Selecting cable trays can feel overwhelming, especially with so many options available. But don't



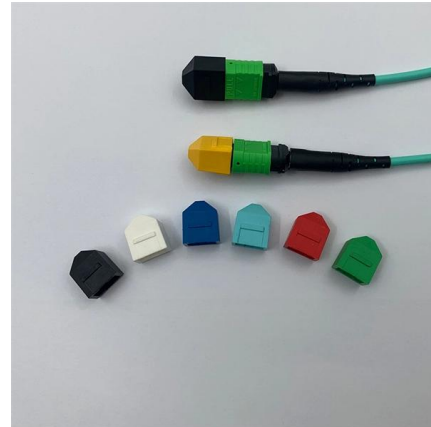
## Installation Standards of Cable Trays

The cable tray systems are permitted to have mechanically discontinuous segments between cable tray runs or between cable tray runs and equipment. As a whole,



## Cable Tray Systems: Requirements and Best Practices

Comprehensive guide to cable tray systems requirements: tray types, materials, loading, supports, bonding, routing, and best practices for safe electrical cable management.



## NEC Standards for Cable Trays: Grounding, Fill Capacity

What NEC Article Covers Cable Trays? ANEC Article 392 specifically governs cable tray installations. Do Cable Trays Need to be Grounded? Yes. Metallic trays must be bonded and



## Master Cable Tray Installation: A Professional Step-by

Learn how to install cable trays for large-scale projects with our professional, step-by-step guide covering industry standards, safety protocols,



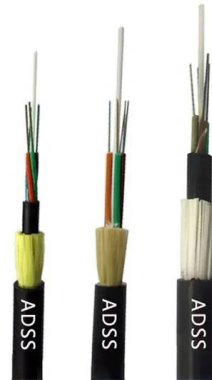
## Cable Tray Systems: Requirements and Best Practices

Segregate trays for different systems where required - for example, separate trays or compartments for power, control, instrumentation, and communication. Maintain adequate



## Best Practice Guide to Cable Ladder and Cable Tray Systems

This guide covers cable ladder systems, cable tray systems, channel support systems and associated supports intended for the support and accommodation of cables and possibly other electrical



### Precautions for Cable Tray Installation

Cable Tray Installation Guide The correct installation of cable trays is crucial for establishing a reliable and efficient cable system. It ensures that cables are

### Cable Tray Design, Layout, and Overall Wiring Planning

Learn about effective Cable Tray Design and Layout for electrical systems. Our guide covers planning, material choice, safety,



## Contact Us

For datasheets, pricing, or custom high-speed optical interconnect solutions, please visit:  
<https://www.syropy.com.pl>