

Distribution diagram of small busbars in switchgear





Distribution diagram of small busbars in switchgear



Switchboard Busbar Guide (2025): Design & Standards

Learn how switchboard busbars are designed, sized, and verified

What is a Busbar? A Detailed Guide

Table of Contents A busbar is a metallic strip or bar used in electrical power distribution, installed inside switchgear, circuit boards, and busway boxes



Busbar Presentation2.pdf

It covers topics such as busbar material selection criteria, sizing calculations, installation practices, and good practices for bending, punching holes, making

LabSoft Course

"Busbar Systems" Experiment Objectives
Understanding switchgear's basic design and power distribution. Understanding the difference between an isolator and a circuit breaker.
Learning about



Busbar Arrangements in Substations , Terminal and

Busbar are the important components in a sub-station. There are several Busbar Arrangements in Substations that can be used in a sub-station.



MNS R

MNS R main busbars are available for currents up to 6300 A. Main busbars, as well as distribution busbars, can be completely segregated. Each MNS R panel can be fitted with three busbar systems



Bus Bar Design for an Electrical Switchboards

In summary, the bus bar is the backbone of the switchboard--its design directly impacts reliability, safety, and performance of the entire system. With this understanding, let us now look at





Circuit configurations (single line diagrams) for HV and MV switchgear

Busbar design in switchgear ensures safe, reliable power distribution by balancing current capacity, thermal performance, mechanical strength, insulation, and standards compliance. A busbar



Substation Busbar System Overview , PDF , Electrical

The document discusses different types of busbar systems used in substations: 1) Single line diagrams provide a graphical representation of the electrical

Substation Busbar System Overview , PDF , Electrical

Substation Busbar System Overview The document discusses different types of busbar systems used in substations: 1) Single line diagrams provide a graphical



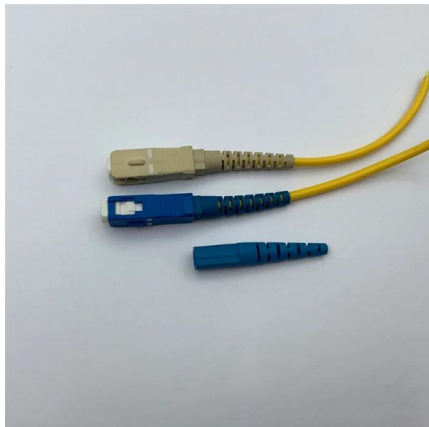
What is Electrical Bus Bar? Everything You Need To Know

Provide a comprehensive guide to what an electrical bus bar is, its purpose, types, materials, and applications in various electrical systems.



Single busbar systems up to 5000 A

The two physical busbar systems are combined electrically into a single busbar system. The current carrying capacity of the busbar in this application is up to 5000 A under standard conditions.



An In-Depth Look at Busbars: Understanding the Electrical

Busbars typically have a rigid conductor connecting power transformers, switchgear, generators, and other electrical equipment.

Understanding Switchgear Circuit Diagrams Key Components

Explore key components and wiring principles of switchgear circuit diagrams. Learn how busbars, breakers, and relays interact in electrical distribution systems for safety and control.



What Is a Bus Bar in Electrical Engineering? Full Guide

Discover what a bus bar is in electrical systems, how it works, the different types, materials used, key benefits, and where it's applied. Cover everything you need



Basics in low voltage distribution equipment

Low voltage switchgear In some cases, more highly functional low voltage distribution equipment is needed to best protect, control and monitor critical power electrical distribution systems safely and



Busbars 101: A Comprehensive Guide

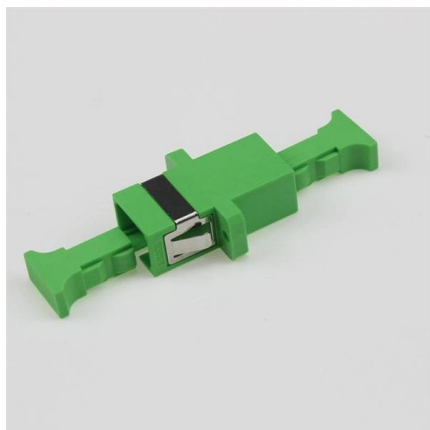
Introduction to Busbars in Electrical Systems Busbars are essential components in electrical power systems, designed to distribute power efficiently within switchgear, panel boards, and distribution

"Busbar Systems"

Three-phase power with currents of up to 5 Amps per phase can be carried, measured and switched by means of the double busbar model. Also present on the board is a branch/ connector which can be

Fast shipment in stock Default white and black, contact customer service for notes

4U standard model



Bus Bars: Essential Components of Power Distribution

Explore the essential role of bus bars in power distribution and learn about their design and efficiency considerations.



Switchboard Construction Basics For Engineers , EEP

Pictorial Diagram Simplified drawings, such as one-line, block, or pictorial diagrams are often used to show the circuits associated with a power



Bus Bar Arrangement in Substation

All the diagrams refer to 3-phase arrangement but are shown in single-phase for simplicity. Single Bus Bar System The single bus-bar system has the simplest

Busbar Basics: Understanding the Fundamentals of Electrical Power

Conclusion: Understanding the basics of busbars is vital for ensuring safe and efficient electrical power distribution. By grasping the core principles of busbar design, material selection, and maintenance,



Bus-Bar Arrangements in An Electric Circuit , PDF

The document discusses different bus-bar arrangements in electric circuits including single bus-bar, sectionalized single bus-bar, main and transfer bus, double bus



Bus Bar Design for an Electrical Switchboards

In essence, a well-engineered and thoroughly validated bus bar system forms the backbone of a reliable power distribution network. It reflects not only sound electrical design but also



Busbar

In electric power distribution, a busbar (also bus bar) is a metallic strip or bar, typically housed inside switchgear, panel boards, and busway enclosures for

Busbar in Electrical System: Types, Applications,

Applications of Busbar in the Electrical Industry
Busbars have a wide range of applications in different industries, from automotive to aerospace. The



Switchboard Busbar Guide (2025): Design & Standards

Switchboard Busbar Last updated: August 2025
Busbars are the backbone of a low-voltage switchboard: rigid conductors that collect and

UL 891 Switchboards Guide: Dead-Front



Low-Voltage Distribution for

Learn how UL 891 switchboards differ from UL 1558 low-voltage switchgear, why dead-front construction matters, and how E-abel supports custom electrical enclosure and switchboard



Types of Busbars & Schemes - Explained with Applications

Understand Types of Busbars and how they make complex power distributions simpler in electrical power distribution,.

Contact Us

For datasheets, pricing, or custom high-speed optical interconnect solutions, please visit:
<https://www.syropy.com.pl>