

Distribution box pressure standard requirements





Distribution box pressure standard requirements

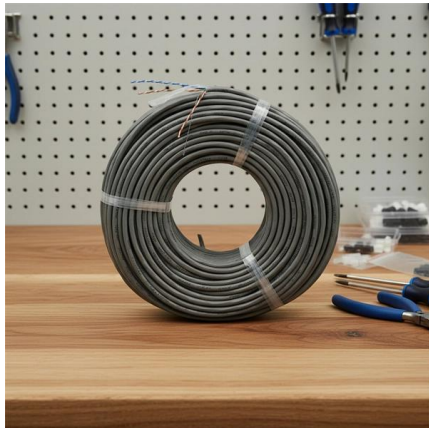


C57.12.39-2017

Certain mechanical requirements relating to tank strength as well as static and dynamic tank pressure mitigation for liquid-immersed distribution transformers are covered in this standard.

GB-distribution box and enclosures

All listed GB distribution boxes and empty enclosure have been tested and approved by the BASEEFA authorities according to the latest European Standards. These correspond to the requirements of the



Outdoor Electrical Distribution Box Specifications: NEC

This specification guide provides system designers, electrical engineers, and procurement professionals with the technical criteria needed to

DIN EN 12186:2014

This European Standard contains the relevant functional requirements for gas pressure regulating stations, which form part of gas transmission or distribution



Systems An Introduction to Gas Distribution

9.5.5 VERIFICATION OF SYSTEM PRESSURE DROP. It is standard practice for domestic gas suppliers to verify or supply system pressure drops for the designer. Upon submittal of the plan for the



The height requirement of distribution box

When installing the distribution box, the wooden box must be removed. During electrical piping, the power supply and load pipes of the distribution box shall be arranged in order from left to



What Is an Electrical Distribution Box? A Complete Guide

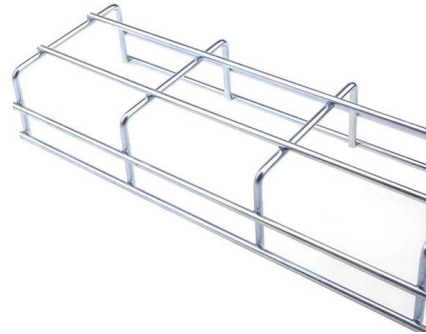
What Is an Electrical Distribution Box? An electrical distribution box serves as a centralized unit for distributing electrical power within



Safety requirements for distribution box



4? All kinds of electrical components and leakage protectors used in distribution boxes at all levels shall meet the quality requirements of national standards. 5? The leakage protectors in distribution boxes



The installation requirements for the distribution box

Learn how to install a distribution box safely and correctly. Covers wiring, placement, standards, and expert tips for a compliant setup.

Maharashtra State Electricity Distribution Company Limited

Specification covers the design, manufacture, testing at works and supply of Distribution Boxes made out of CRCA MS for controlling the L.T. feeders from the L.T. side of Distribution Transformers. The



Requirements And Specifications For Installation Of

The installation requirements and specifications of Distribution box involve many aspects, including site selection, fixing method, wiring specifications



IEC Standard for Power Distribution Board Design and

Designing a power distribution board is not just about placing components inside a metal box. It requires a deep understanding of international



Design requirements and standards for low voltage

You need to understand the main standards and codes that guide the safe design and use of low voltage distribution boxes. These rules help you meet

TECHNICAL SPECIFICATION I.R.O. 63,100,160 & 315 KVA L.T.

Distribution Boxes shall have Isolator (Switch Disconnecter) on incoming circuit and Porcelain CUTOUT fuse base disconnecter on outgoing circuits with necessary interconnecting Bus Bars.



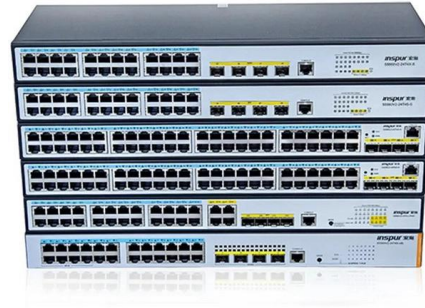
Technical Requirements for Distribution Box in Electrical Industry

Different industries, different products have different technical requirements, in the electrical industry, distribution boxes, distribution boxes are no exception, distribution boxes, distribution boxes are also



DISTRIBUTION BOX

Technical Specification for Distribution Box (DB)-
Accessory for LT AB Cables 1. SCOPE 1.1 This
Distribution Box (DB) should be made up of
Weather & Moisture Proof Outer box with Spring
loaded

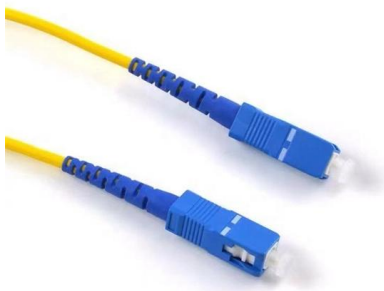


Installation requirements for distribution boxes

Distribution boxes shall be made of non-combustible materials; open distribution boards may be installed in production places and offices with low electric shock risk; enclosed cabinets shall

Safety requirements of distribution box

The distribution box has the characteristics of small size, simple installation, special technical performance, fixed location, unique configuration function, not limited by



Detailed introduction of safety requirements for distribution box

Safety control requirements for distribution box:
1. The low-voltage power supply system at the construction site shall be equipped with a general distribution box, a distribution box and a



IEC 61439 Standard Explained: Low Voltage Distribution Box

Low voltage distribution boxes are the silent guardians of modern infrastructure - hidden behind walls and in utility rooms, orchestrating power flow with Swiss-watch precision. Like the

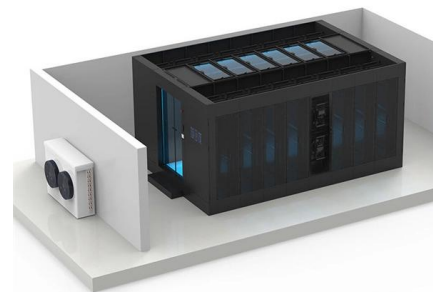


Contents.PDF

The performance data included in this Guide have been obtained from testing programs conducted in flow measurement laboratories and detailed in the reference test reports. The data are reprinted in

Requirements for distribution box at construction site

2? The rated value and action setting value of the main distribution box shall be compatible with the rated value and action setting value of the branch switch. 3? The electrical components and leakage



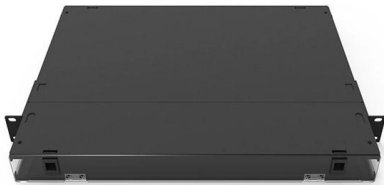
Brief Introduction To The Requirements Of Distribution Box

The distribution box device is the low-voltage terminal responsible for completing the system power control, protection, and distribution device conversion. The power



OAR 340-073-0060 - Distribution Boxes, Drop Boxes, and

For pipe diameters of 1 inch or less, the minimum pressure rating is 200 pounds per square inch (psi). For pipe diameters greater than 1 inch, the minimum pressure rating is 160 psi.



Standard Design And Construction Specifications For Water Systems

1.4. Water Supply Pressure Distribution and transmission design operating pressures shall not be less than forty (40) psi, nor more than one hundred (100) psi in the water main, service connection and

Contact Us

For datasheets, pricing, or custom high-speed optical interconnect solutions, please visit:
<https://www.syropy.com.pl>