

Distribution box for civil defense alarm room





Distribution box for civil defense alarm room

QCDD General Fire Safety Requirements Guideline

FIRE PREVENTION DEPARTMENT GENERAL DIRECTORATE OF CIVIL DEFENCE MINISTRY OF INTERIOR, STATE OF QATAR GENERAL FIRE



LEX

Home > Products > Combat Support > Expeditionary > Energy Efficiency > LEX - 60A Utility Distribution Box



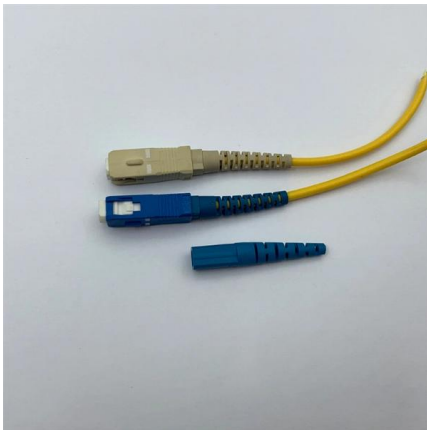
Civil defense siren

A civil defense siren is a form of siren used to warn civilians of approaching danger - a form of emergency population warning. Initially designed to warn city dwellers of



PROTECTED DISTRIBUTION SYSTEMS (PDS)

Protected Distribution Systems provides the security condition of the distribution system, as follows: The classification level of the area controlled and indication of whether uncleared personnel are monitored.

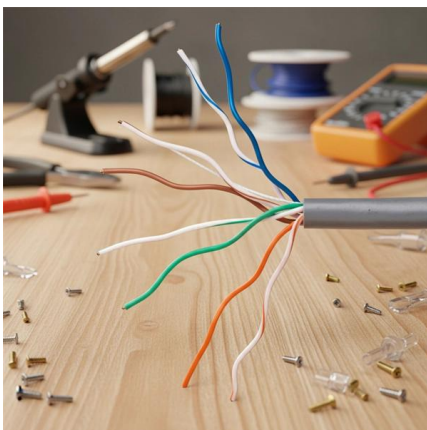


How to Choose a House Distribution Box , CHINT global

A well-chosen distribution box ensures the safety and efficiency of your household electrical system. This article guides you through selecting a

Civil defence equipment

I know a good little bit about civil defence siren equipment and activation equipment ect, but I know almost nothing about the local equipment they had. For instance, I beleive that civil



DAFMAN91-203

Performing maintenance or inspections on aircraft or ground support equipment, including civil engineering-type or transportation-type maintenance where such activity could result in injury.



Ex Local Control Stations & Distribution Boxes

Atex control stations, explosion protected control units and distribution boxes made stainless steel maritime grade AISI 316L or AISI 304L. Atex Delvalle provides a



8-Port PLC Fiber Splitter Box

12-Port SC Fiber Splitter Box

Size: 235*215*75mm
Material: ABS, IP65,

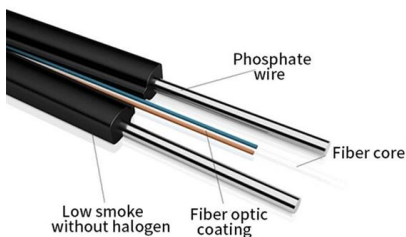
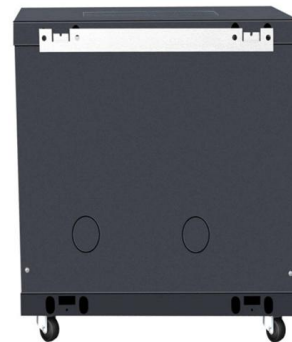


UFC 4-021-02 Electronic Security Systems

UFC are living documents and will be periodically reviewed, updated, and made available to users as part of the Military Department's responsibility for providing technical criteria for military construction.

FIRE PREVENTION DEPARTMENT GENERAL DIRECTORATE OF CIVIL DEFENCE

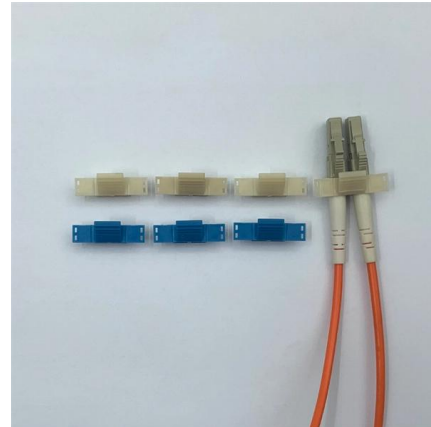
FIRE PREVENTION DEPARTMENT GENERAL DIRECTORATE OF CIVIL DEFENCE MINISTRY OF THE INTERIOR, STATE OF QATAR



OPNAVINST 5530.13D

In civilian communities (e.g., reserve centers) arrangements must be made to connect alarms to civil police headquarters, private security companies or a central station monitoring service from which

Recommended Engineering Design for Fire Alarm and Voice Evacuation Systems in High-Rise Buildings (UAE Civil Defence Compliant) When designing a fire alarm and voice evacuation



Distribution Box Modules

High-end testing equipment alongside technologically advanced machine park allow us to provide a wide range of services for other companies, in addition to our internal projects. Check what we can do for

981 281 100

1.01 This section provides information formerly contained in Section 951-210-100, which is hereby canceled. This section also provides a redefinition of the meaning and application of civil defense



US Army Communications Distribution Box NSN:6110-01-069-4895



It is primarily designed to distribute electrical power from one or more primary power source (s) such as generator (s) and battery (ies) to one or more electrical and/or electronic item (s). It may include a



The Bells and Lights and NEAR systems- What Happened?

Although they both failed implementation- and distribution-wise, they were still a step in the right direction for a rapidly evolving technological field, and showed civil defense's need to



PROTECTED DISTRIBUTION SYSTEM CHECKLIST

If GSA locks cannot be used, a standard locking manhole cover and approved micro-switch alarms should be used. The data cables must be installed in a carrier. The carrier must be constructed of

Physical Security of Arms, Ammunition and Explosives (AA& E)

Place keys to lock boxes on the DA Form 5513. The AA& E key custodian will issue the key to the operational set of arms room keys to the armorer each time the arms room is opened for the day.



Ultimate Guide to Choosing and Maintaining an Intruder Alarm Box

Learn how to choose, install, maintain, and power an intruder alarm box. Explore RS-485 bus systems and tips to enhance security with expert guidance.



Dahuasecurity

Hier sollte eine Beschreibung angezeigt werden, diese Seite lässt dies jedoch nicht zu.



General Alarm Distribution Panel

General Alarm Panels and other DC Distribution Panels are custom built at J Box, Inc. Please contact us about your specific requirements.



UFC 3-520-01 Interior Electrical Systems

Distribution and branch circuit panelboards should be of the wall-mounted, dead-front type, equipped with bolt-on circuit breakers. Load center style panelboards, with plug-in breakers should be used



Auxiliary Power Distribution

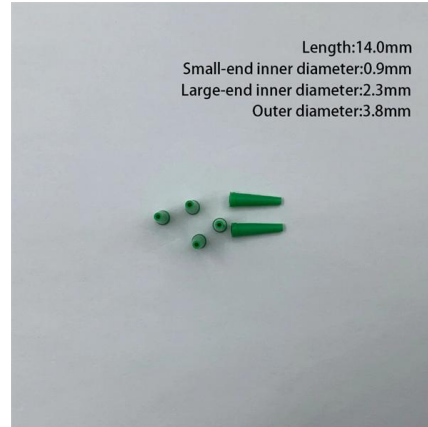
We offer a wide variety of heavy-duty PA6 or aluminium boxes for power distribution suitable for ADR, defence or general commercial vehicle use, water and high





Civil Defense Alarm Systems , Advanced Siren Solutions by RIBRI

Advanced Civil Defense Alarm Solutions for Global Safety Discover RIBRI's cutting-edge civil defense alarm systems, designed to safeguard communities through innovative acoustic technology. Our



Power Distribution Box, Buy General Emergency Alarm

Power Distribution Box for sale, We supply General Emergency Alarm System with various sizes, reliable supplier in China.

Contact Us

For datasheets, pricing, or custom high-speed optical interconnect solutions, please visit:
<https://www.syropy.com.pl>