

Distribution box connected to bare wire





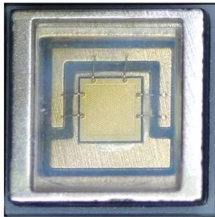
Overview

What Is a Distribution Box?

A distribution box, also known as a power distribution unit, is a critical component in any electrical system.



Distribution box connected to bare wire



Why is the Grounding Wire Bare and Not Insulated?

Why is Mostly Solid Bare Conductor Used for Grounding Instead of Insulated Wire? A ground wire, also known as a grounding wire or ground conductor (GEC and

Bare wire connection techniques.

Bare wire connection techniques. Hi, There must be a simpler way to connect the bare wire inside a duplex box. When I run a circuit into a duplex receptacle box, to an outlet, then back out



A Step-by-Step Guide to Wiring an Electrical Panel Box

Find out how to properly wire an electrical panel box with a comprehensive diagram and step-by-step instructions.



How to Wire a Home Distribution Box

Welcome to our channel! In this video, we'll walk you through the process of wiring a home distribution box with a detailed connection diagram. Whether you're an electrician or a DIY enthusiast



How to Install a Distribution Box--A Comprehensive

Connect the input and output wires to the corresponding terminals of the distribution box. Then press the wire onto the terminal with a wire stripper, or



How to Install a Cable Distribution Box Safely and

Reliable cable distribution boxes ensure safe, efficient power management for residential, commercial, and industrial systems. Learn



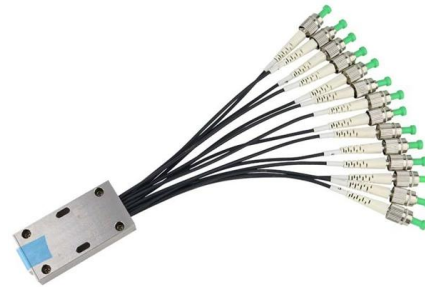
Electrical Power Distribution System:

Electrical power is the most widely used form of energy because it can be transmitted and distributed far more easily than other forms, such as



Correct Connection Method Of Grounding Wire Of

Following the above steps and precautions can ensure the correct connection of the distribution box grounding wire, thereby ensuring the safe

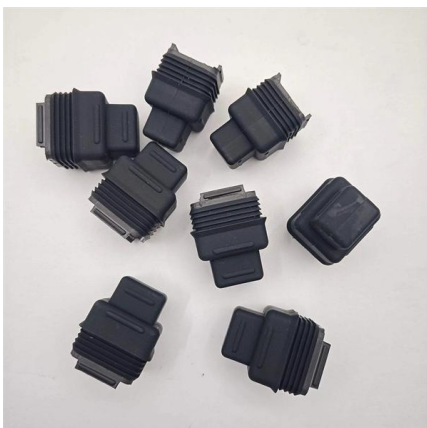


Distribution Box Wiring Steps

?Wiring Direction?: Wiring between the main circuit breaker and each branch circuit breaker in the box generally goes on the left, and the wiring out of

120V Branch Circuits: Wiring and Safety Essentials

The article discusses the wiring of typical 120-V branch circuits, focusing on receptacle outlets, switch outlets, and light outlets. It covers essential safety



How to Wire a Home Distribution Box

In this video, we'll walk you through the process of wiring a home distribution box with a detailed connection diagram.



Should a Breaker Box Wire Neutral or Ground?

Master the fundamental safety difference between neutral and ground wires and the strict rules governing where they must connect or separate.



Electric distribution box wiring tutorial (very simple and practical)

In this video, we are going to wire a power distribution box. This small box has an rccb switch that protects the outputs from electric shock and also has a miniature switch that protects the

How to Wire a Home Distribution Box

In this video, we'll walk you through the process of wiring a home distribution box with a detailed connection diagram. Whether you're an electrician or a DIY



How to connect the electrical distribution box and the main electrical

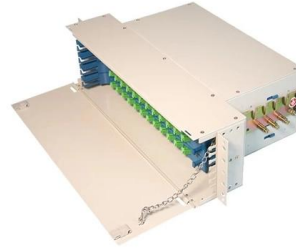
Note: The door and box of the electrical distribution box must be reliably connected with braided soft copper wire as protective neutral connection.





Understanding Circuit Breaker Wiring Configurations in

Correct wiring methods for circuit breakers within distribution boxes are fundamental to ensuring electrical safety and compliance with established codes.

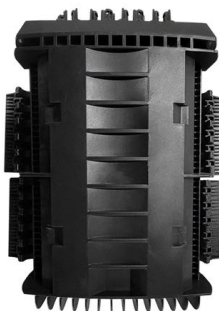


The Complete Guide to Distribution Box: Installation, Types & More

Busbars are metal strips or bars that distribute electrical power throughout the distribution box. They carry current from the main switch to individual circuit breakers, providing a reliable

Electrical Box Ground Wire Connectors & Connections

How to make proper & safe electrical ground wiring connections in the box: This article describes options for connecting a metal electrical box to the grounding conductor & connecting the grounding



Single phase Distribution Box wiring

Learn how to wire a single-phase distribution box (DB box) step-by-step with this detailed guide. This video explains the connection of MCBs, RCCBs, isolator



Circuit Breaker Box Wiring: How to Wire a Circuit

Wiring a circuit breaker box for a generator allows you to safely connect your generator to your home's electrical system. Here's how to do it:

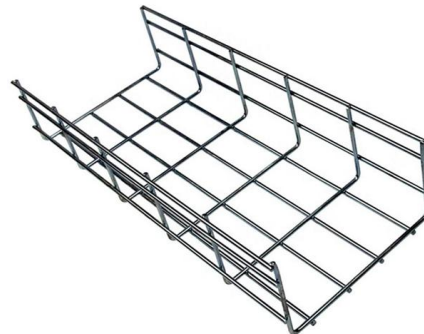


on video **How to Wire a Home Distribution Box**

How to Wire a Home Distribution Box - Step-by-Step , Distribution DB box wiring diagram
Welcome to our channel! In this video, we'll walk you through the

Distribution panel neutral/ground separation question

Need some help understanding something. Since the whole idea of the separation is that its possible for current to follow a parallel path - over the bare grounding wires - instead of the



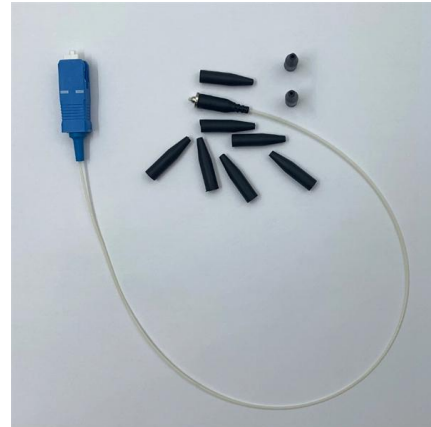
Home Distribution DB Box Wiring Connection Diagram

Welcome to our channel ?@Electricalgenius? In this video, we'll take you through a detailed step-by-step guide on wiring a home distribution DB (Distribution Board) box. Whether you're an



How to Wire a Home Distribution Box

The above mentioned electrical wiring accessories and protective devices are used to control and distribute electric supply (safely to connected electrical appliances)



Understanding Distribution Boxes: A Comprehensive Guide

A distribution box, also known as a power distribution box or electrical distribution box, is used to distribute electrical power safely to multiple

The installation requirements for the distribution box

Learn how to install a distribution box safely and correctly. Covers wiring, placement, standards, and expert tips for a compliant setup.



How to Wire an Electrical Circuit Breaker Panel

In a new home construction or a major rewiring project, the last step will be connecting all the wires to the circuit breaker box,

The Complete Guide to Distribution Box:



Installation, Types & More

What's the difference between a distribution box and a sub-panel? A distribution box typically refers to the main electrical panel that receives power from the utility service. A sub-panel is



Contact Us

For datasheets, pricing, or custom high-speed optical interconnect solutions, please visit:
<https://www.syropy.com.pl>