

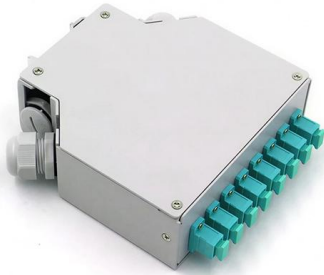
# **Distribution Network Automation and Overhead Lines**





## Distribution Network Automation and Overhead Lines

---



### Distribution Automation

Distribution network automation refers to the combination of modern electronic technology, communication technology, computer network technology with power system equipment, integrating

### Optimization and application of artificial intelligence in robotic

OBJECTIVES: In order to solve the practical problems in the design of artificial intelligence and distribution network overhead line engineering, this paper focuses on the practical



### IWOS Distribution Overhead line Monitoring System - IndusGrove

The IWOS Overhead Line Sensor from InHand Networks is an intelligent sensing device designed for smart grid environments. With real-time wireless communication, high-precision measurements, and

### Distribution Overhead Line Monitoring with LEM's ART Rogowski coil

New line current sensors allow utilities to monitor their overhead distribution lines to maximize their capacity and prevent clearance violations thus improving reliability and efficiency of the MV



### Distribution Automation

Ensto's distribution automation solutions improve the quality, reliability, sustainability, and cybersecurity of low and medium voltage networks. They help to reduce the frequency and duration of power



### Overhead line path planning based on deep reinforcement learning

Overhead line planning is an essential component of modern infrastructure construction in human society and a fundamental prerequisite for the transportation and distribution of resources,



### Optimization and application of artificial intelligence in robotic

OBJECTIVES: In order to solve the practical problems in the design of artificial intelligence and distribution network overhead line engineering, this paper focuses on the practical use of such

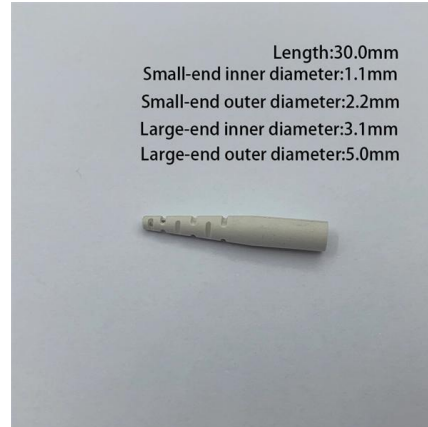






### **This is a title**

Application of robot automation technology based on machine assisted and artificial intelligence in distribution network overhead line engineering Yi Tan 1, Yunhui Wang 1,\*, Xue Li 1, and Meng Li 1



### **Feeder protection and control**

Relays for different application ranges for overhead lines and cable feeders in distribution networks.

### **Optimization and application of artificial intelligence in robotic**

Artificial intelligence has covered every aspect of life, and the distribution network overhead line project is also one of them. The combination of the two symbolizes the combination of



### **Three Phase Automatic Step Voltage Regulator , Distribution Network**

Three-phase automatic step voltage regulator with fast on-load tap changing, wide regulation range, intelligent monitoring. Overhead lines and substations.



Distribution Monitoring and Automation RTU for extensible Switchgear in underground Distribution networks or pole-mounted LBS in Overhead lines.



### **Underground vs Overhead Power Distribution Lines:**

Learn how underground and overhead power distribution lines differ in terms of cost, design, and performance. Find out how to reduce losses in power distribution.

### **Application of Robot Automation Technology Based on**

RESULTS: At the scene of the work, the artificial intelligence distribution network power-carrying operation robot integrating artificial



### **Overhead Lines**

The overhead transmission or distribution conductors are usually a very flexible element in length and uniform in weight characteristics, formed as a catenary between the support towers . Methods to



## Enhancing Grid Reliability with Real-Time Overhead

Overhead Power Line Monitoring Overhead power lines (OHL) play a crucial role in the transmission of electrical energy, forming the backbone of essential

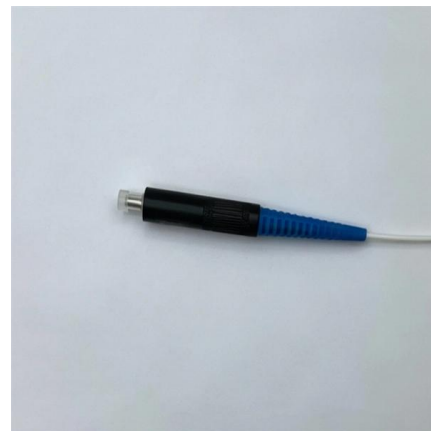


## Distribution automation of overhead line circuits

In order to maintain high supply reliability, distribution automation (DA) plays a vital role in supply restoration, especially in rural areas where access to the site is sometimes very difficult.

## Control and Automation Systems for Distribution Networks

The connection of a large number of DER to a distribution network can result in a number of issues, including voltage rises above specified limits and overloading of network equipment such



## Long-term maintenance planning of medium voltage overhead lines

Long-term maintenance planning of medium voltage overhead lines considering the uncertainties and reasons for interruption in a real distribution network



## Distribution Automation , Siemens

Our distribution automation solutions optimize primary equipment O& M, boost supply safety & voltage quality, and adapt quickly to network changes. They also feature



## Design Guide For Overhead Distribution Systems

These voltage values, which are all ' line to line ' values are 66kV, 22kV, 11kV, 6.6kV and 400/230V. Some of these values are rarely used in public

## Optimal Design of Distribution Overhead Powerlines Using Genetic

As the design of distribution overhead power lines becomes increasingly standardized in the 21st century, the reduced search space of its design parameters allows for increasing



## Introduction

This manual presents a brief description of typical practices for the design, installation, and usage of overhead utility distribution lines, including power supply and communications,



## Contact Us

---

For datasheets, pricing, or custom high-speed optical interconnect solutions, please visit:

<https://www.syropy.com.pl>