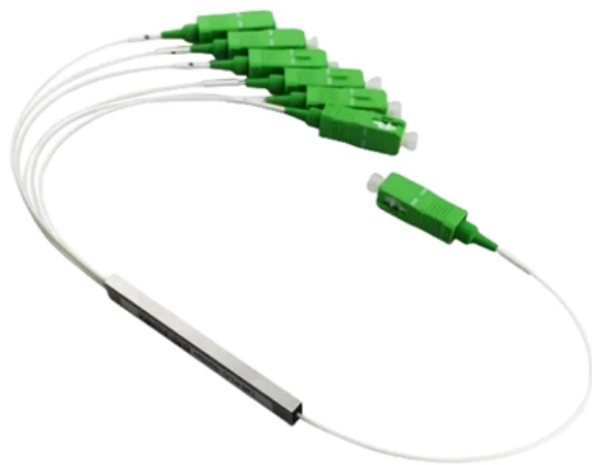


Distribution Box Network Metering Device





Distribution Box Network Metering Device

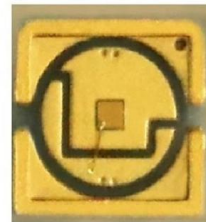


ENYBOARD

The Gustav Hensel GmbH & Co. KG is a leading company specialising in the manufacture of innovative electrical installation and power distribution systems for facility equipment of buildings.

Advanced Metering Infrastructure , Hitachi Energy

As distribution utilities begin deployment of next generation Advanced Metering Infrastructure (AMI) plus systems, a robust communications network is a

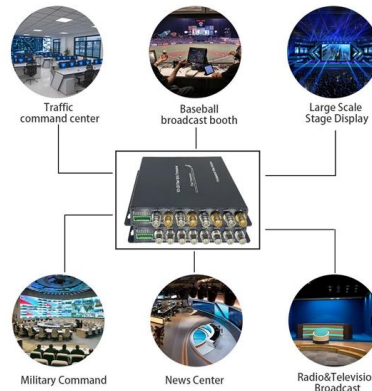


Intelligent Remote Distribution Box Monitoring Solution

The distribution box is embedded with the DTU distribution device, distribution device power module, and distribution device power supply. By leveraging the intelligent

Smart Metering and Monitoring , Product launches , ABB

In this scenario, detailed metering and monitoring of the entire electrical system is essential in order to achieve maximum energy efficiency. New and coming



METERING TECHNOLOGY INNOVATION IN POWER DISTRIBUTION

METERING TECHNOLOGIES An electric meter or energy meter is a device that measures the amount of electrical energy supplied to customers of an electric supply company. Electricity providers must

Difference between meter box and distribution box

The meter box is a special box for electricity metering, such as ammeter, watt hour meter, power meter, etc. The distribution box is a special box for low-voltage



Guidance on installing equipment within meter

Individual Distribution Network Operators (DNOs) will issue their own guidelines on the provision of space in meter enclosures as a condition in their



Smart Metering in Distribution Systems:



Evolution and Applications

The costs of smart metering deployment are directly related to capital investments in smart metering devices, communication infrastructure, and associated operational expenses. On the



The Consumer Power Substation With Metering On

The single line diagram and the layout of a substation with MV metering depend on the complexity of the installation and the presence of

Power Distribution in Industries - All You Need to Know

Power Distribution in Industries - Everything You Need to Know Table of Contents Structure of Power Distribution in Industries Low Tension (LT) Panel Air Circuit



Fact Sheet Metering Installation Design

Metering Installations Each market connection point must have a metering installation, in which the FRMP (often the electricity Retailer) is ultimately financially responsible. Major Customers should



Functions of the substation with MV metering

MV/LV Transformers and internal MV distribution
As mentioned for substation with LV metering, only oil-immersed and dry type cast-resin transformers are allowed with the same rules of



Elsta Mosdorfer

For further energy distribution after metering or transformer cabinets outdoors and indoors, ELSTA Mosdorfer offers a wide range of totally protected fuse

Research of metering scheme key techniques for medium and low

However, from the national and industrial level, there is no clear standard for the design of the metering scheme for the medium and low-voltage DC distribution network, and there is a



Elsta Mosdorfer , Elsta Mosdorfer

Perfectly suited to metering, measuring, and redistribution of electric energy or gas outdoors or indoors. Metering connection cabinets and metering distribution cabinets from ELSTA Mosdorfer are used for



Distribution boxes - For modular and decentralized

Variable power distribution device for quick and safe connection A versatile system requires smart connection technology. The innovative FieldPower® module



National Metering Installation Requirements

Under retail and network connection agreements, the customer must provide the Metering Provider with safe and unhindered access to the Metering Installation for purposes associated with the metering of

Distribution Box: Types and Functions , Axis-Electricals

A distribution box ensures that electrical supply is distributed in the building, also known as a distribution board, panel board, breaker panel, or electric panel.



Meter distribution boxes

The insulated, encapsulated housings for the meter distribution box are easy to install. With the meter distribution in a multiple box construction type in accordance with DIN EN 61439-2/-3, installers have



Distribution Box Guide: Types, Components & Solutions

Understand distribution boxes (DB boxes) in 5 minutes. Learn about types, components, functions, and uses. Find the perfect DB box for your needs.



TE Connectivity

Hier sollte eine Beschreibung angezeigt werden, diese Seite lässt dies jedoch nicht zu.

COMMUNICATING MEASUREMENT OR METERING BOX

Main features The pole-top measurement or metering box gives LV distribution network operators the ability to access the following information remotely :



Electric power distribution

Electric power distribution A 50 kVA pole-mounted distribution transformer Electric power distribution is the final stage in the delivery of electricity. Electricity is



Communicating measurement or metering box , Groupe Cahors

Provides surveillance and monitoring of an overhead substation. The boxes consist of a pole-mounted transformer and a protective device (fuse-protected panel or circuit breaker). The pole-top



Contact Us

For datasheets, pricing, or custom high-speed optical interconnect solutions, please visit:
<https://www.syropy.com.pl>