

# **Distribution Box Manufacturer Certificates**





## Overview

---

A Box Manufacturer's Certificate (BMC) is typically printed on the bottom flap of a corrugated box and includes important ratings and measurements that specify how the box is intended to perform during shipment. It confirms that the box was manufactured and tested to meet the strength ratings. Key requirements include temperature rise tests 2, IP rating verification 3, short-circuit withstand testing 4, detailed technical files, and compliance with. When determining if a shipment complies with the National Motor Freight Classification ® (NMFC) ® rules, shippers have a valuable but often overlooked resource—the Box Manufacturer's Certificate (BMC). Warning: Your Declaration of Conformity isn't just paperwork - it's a legally binding document. I've seen companies face heavy fines and product recalls because they copied another company's DoC without understanding their specific obligations.



## Distribution Box Manufacturer Certificates

---



### Your Simple Guide to Reading a Box Maker's Certificate

Learn everything about Box Maker's Certificates. Understand Mullen vs. ECT ratings, and pick the best boxes for your shipping needs every time.

### Packaging 101: Box Maker Certificates

What Box Manufacturer Certificates are: Box Manufacturer Certificates are images printed on a box (typically on the bottom) to tell the user that the



### CE Certification for Distribution Boxes: Key Testing Items and

In this guide, we'll walk together through what really matters: the actual tests your distribution box must pass, and the documents that prove it's worthy of that CE mark. By the end, you'll know exactly what



### Business Standard

Hier sollte eine Beschreibung angezeigt werden, diese Seite lässt dies jedoch nicht zu.



### **Distribution Box Manufacturing Process , Custom**

Learn the step-by-step distribution box manufacturing process--from design and material selection to assembly and testing. E-abel provides high-quality electrical



### **How to Read a Box Maker's Certificate Correctly**

Introduction to BMC A Box Maker's Certificate (BMC) is a label found on corrugated boxes that provides detailed information about the box's



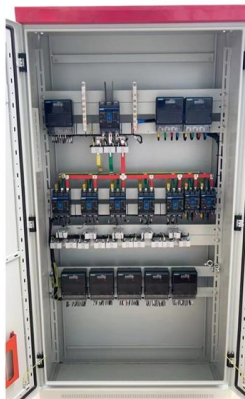
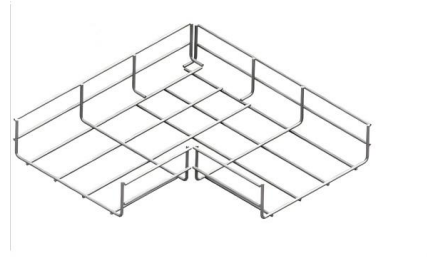
### **Distribution enclosure, Distribution box**

Used for strong current connection of high voltage distribution box, all-in-one controller, battery box and other equipment. JX59 single-core series adopt plastic housing, while JX59M single-core series



## Why Certifications Matter for Distribution Boxes, Breakers, and Fuses

Beyond market access, certified distribution boxes provide operational advantages that translate to measurable business benefits. Certified units demonstrate verified performance under



## Knowledge of carton packaging: What is Box Maker's

The Box Maker's Certificate (also named as box manufacturer certificate) is a stamp or label commonly found on corrugated boxes that provides important information

## What Certificates Should a Box Manufacturer Have?

Without proper certification, buyers risk product recalls, customs delays, reputational damage, and even legal penalties. This guide explains what certificates a box manufacturer should



## Box Manufacturer Certificates: Critical Information Too Many Shippers

When determining if a shipment complies with the National Motor Freight Classification ® (NMFC) ® rules, shippers have a valuable but often overlooked resource--the Box Manufacturer's



## Step-by-Step Beginner's Guide to Reading a Box

Key Components of Box Maker's Certificate  
Manufacturer Information BMC label contains information about the manufacturer of the box which includes

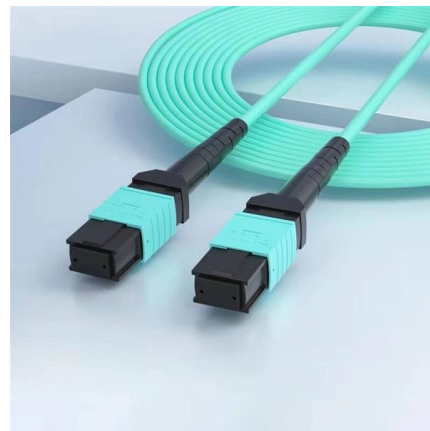


### Packaging 101: Box Maker Certificates

Box Manufacturer Certificates are images printed on a box (typically on the bottom) to tell the user that the product is complying with the rules and

### A comprehensive understanding of distribution box

? Introduction Distribution boxes are at the heart of safe and organized electrical systems--whether in residential, commercial, or industrial settings. But



### Top Distribution Box Manufacturers Compared for 2025

Compare top distribution box manufacturer options for 2025 by quality, innovation, certifications, and support to choose the best fit for your project.



## Distribution Box Certification Guide: What Testing and Documentation

For manufacturers and suppliers, understanding certification requirements is essential for market success. Let me guide you through the critical aspects of distribution box certification 1 based

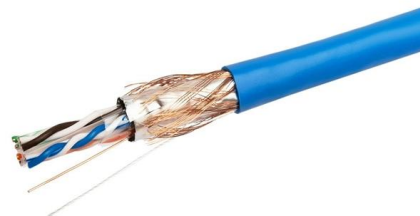


### Understanding the Box Makers Certificate

Therefore, box manufacturers can lower the basis weight when designing boxes and still achieve the required edge crush value. As a result of

### Power Distribution Boxes Manufacturer

Power Distribution Boxes Manufacturer Custom power distribution boxes featuring precise sheet metal fabrication, designed for efficient power management.



### Distribution Boxes

Discover E-Abel's wide range of durable distribution boxes for industrial and electrical use, offering practical, flexible, and innovative solutions.



## What's in a Box Maker Certification Stamp , Landaal

Another component is the Box Manufacturer's Certificate (BMC) itself, which assures that the box has been tested for its burst strength. This is especially important for



## Distribution Box Certification Guide: What Testing and Documentation

Successful distribution box certification requires thorough understanding of testing requirements, comprehensive documentation, realistic timeline planning, and market-specific

## What are Box Manufacturer's Certificates (BMC)?

What is a Box Manufacturer's Certificate (BMC)?  
A Box Manufacturer's Certificate (BMC) is typically printed on the bottom flap of a corrugated box and includes important ratings and



## What Does a Box Maker's Cert Stamp Mean to you?

The cert stamp, or the Box Manufacturers Certificate, is important to both the box manufacturer and the product manufacturers. For the box



## Understanding Box Maker's Certificate (BMC) and Box

Discover the importance of Box Maker's Certificate (BMC) and its details, including box construction, strength tests, and weight limits for optimal



### What you need to know about the manufacturing process of distribution

Automation handles the repetitive, precision tasks, freeing technicians for value-added work. Final Thoughts: Complexity Behind the Simplicity Opening the door to a distribution box

## Contact Us

---

For datasheets, pricing, or custom high-speed optical interconnect solutions, please visit:  
<https://www.syropy.com.pl>