

Distribution Box AK2





Overview

Based on the AK2 modular system, the enclosures are specially designed for inserting data cables and accommodating RJ45 modules in Keystone format. Each cable box includes 2 soft slide-in data lead-ins and 1 slide-in blind cover'. With Attema inserts you can easily make hollow wall boxes Airtight, Smoketight or Soundproof! Specific construction measures apply in hospitals, dental practices and other medical institutions where X-rays are used. AK2, 100 % pluggable Compact PD and multi-PD distribution boxes Boxes for cable support systems Distribution boxes for light controls. M20 cable glands also suitable for residential wiring cable (clamping range: Ø 7 - 13 mm).



Distribution Box AK2

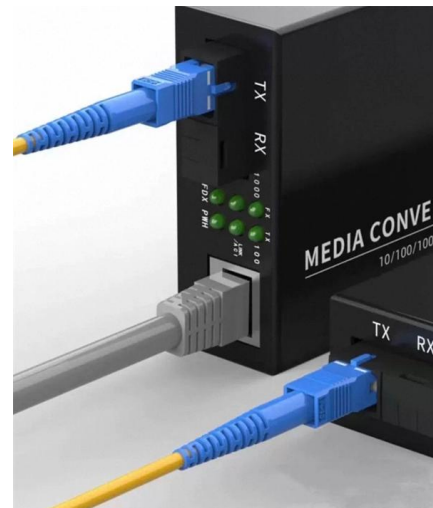


AK2 Data front part for max. 6 modules , Distribution box for data

Distribution box for data networks. AK2 Data. The components of the AK2 Data series offer a modular system for creating a network infrastructure. Based on the AK2 modular system, the enclosures are

AK2 Data front part for max. 4 modules , Consolidation Box

Raised AK2 cover equipped with 4 knock-out ports for the placement of adapters. The adapter allows attachment of almost any brand or type of RJ45 connector and can be ordered separately. The cover



AK2-S/MD cable box for mesh cable trays , Boxes for cable support

Packed per junction box 3 KBS 16 mm slide inlets and 1 shutter slide. Matching AK2 front part can be ordered separately. Suitable for cable support systems from well-known manufacturers



AK2 Data basic housing with angled mounting plate , Distribution box

Distribution box for data networks. AK2 Data. The components of the AK2 Data series offer a modular system for creating a network



infrastructure. Based on the AK2 modular system, the enclosures are



Distribution boxes for light controls. AK2 DALI.

Distribution boxes for light controls. AK2 DALI. Wieland gesis® CLASSIC GST18® snap-in connector 5-pin for DALI applications Connectors are self-locking, can be released with tools Prefabricated with

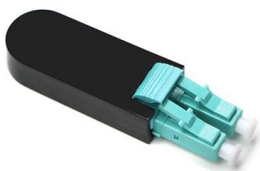
AK2 Data basic housing with flat mounting plate , Distribution box for

Distribution box for data networks. AK2 Data. The components of the AK2 Data series offer a modular system for creating a network infrastructure. Based on the AK2 modular system, the enclosures are



AK2-W5 Deksel, 3x5p DALI Wieland zwart , Distribution boxes for light

Distribution boxes for light controls. AK2 DALI. The front parts of the AK2 DALI series offer solutions when lighting control in building installation technology is implemented using the DALI standard. Just





Adapter LL, LexCom type with label window , Distribution box for data

Distribution box for data networks. AK2 Data. The components of the AK2 Data series offer a modular system for creating a network infrastructure. Based on the AK2 modular system, the enclosures are



Adapter RM, Reichle & De-Massari type , Distribution box for data

Distribution box for data networks. AK2 Data. The components of the AK2 Data series offer a modular system for creating a network infrastructure. Based on the AK2 modular system, the enclosures are

Distribution box for data networks. AK2 Data , AGRO

Distribution box for data networks. AK2 Data. Each cable box includes 2 soft slide-in data leads and 1 slide-in blind cover'. Version with set plastic mounting plate for quick click-assembly on cable trays.



Enclosures and Accessories

Choose one of the following: Boxes for complementary control or distribution panels. Wall-mounting enclosures for minimal space occupation. Floor-standing for





Junction box AK1 / AK2

Each cable box includes 3 nylon (PA) cable glands with diaphragm seal M20. M20 cable glands also suitable for residential wiring cable (clamping range: Ø 7-13 mm).



Data cable entry , Distribution box for data networks. AK2 Data

Distribution box for data networks. AK2 Data. The components of the AK2 Data series offer a modular system for creating a network infrastructure. Based on the AK2 modular system, the enclosures are

Pluggable AK2 front part, Wieland GST18, out: 4x5pin DALI blue

Distribution boxes for light controls. AK2 DALI. The front parts of the AK2 DALI series offer solutions when lighting control in building installation technology is implemented using the DALI standard. Just



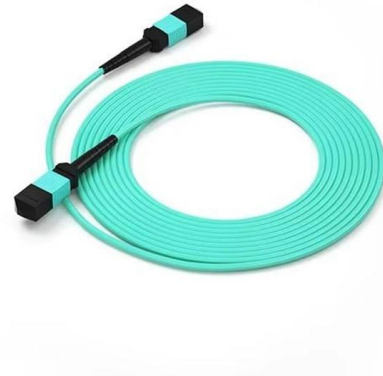
AK2 Data basic housing with screw holes fixing

Based on the AK2 modular system, the enclosures are specially designed for inserting data cables and accommodating RJ45 modules in Keystone format. Installation is virtually toolless, quick and easy,



AK2-S/GZ IP40 , Boxes for cable support systems , Pluggable

Box for cable support systems. AK2 modular system The AK2 modular system can cover a wide range of applications, as it offers the right solution for all installation tasks. The modular system consists of

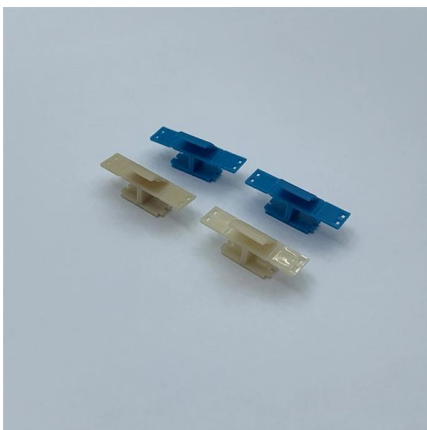


AK2-S Data/GZ zwart , Distribution box for data networks. AK2 Data

Distribution box for data networks. AK2 Data. The components of the AK2 Data series offer a modular system for creating a network infrastructure. Based on the AK2 modular system, the enclosures are

Distribution boxes for light controls. AK2 DALI. , AGRO

AK2, 100 % pluggable Compact PD and multi-PD distribution boxes Boxes for cable support systems Distribution boxes for light controls. AK2 DALI. Distribution box for data networks. AK2 Data Junction



AK2 Junction boxes with connectors

Home page Our Products Junction Boxes Junction boxes - Surface mounted AK2 Junction boxes with connectors



Adapter I+, Infra Plus type , Distribution box for data networks. AK2

Distribution box for data networks. AK2 Data. The components of the AK2 Data series offer a modular system for creating a network infrastructure. Based on the AK2 modular system, the enclosures are



AK2 Data basic housing with screw holes fixing , Distribution box for

Distribution box for data networks. AK2 Data. The components of the AK2 Data series offer a modular system for creating a network infrastructure. Based on the AK2 modular system, the enclosures are



Adapter PL, Panduit type with label window , Distribution box for data

Distribution box for data networks. AK2 Data. The components of the AK2 Data series offer a modular system for creating a network infrastructure. Based on the AK2 modular system, the enclosures are



Spelsberg AK 09 Compact small distribution box Grey

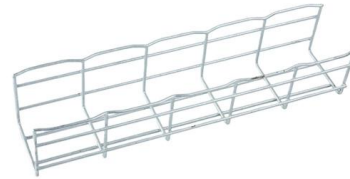
Spelsberg AK 09 Compact small distribution box Grey : Amazon : DIY & Tools About this item Small distributor with protection class IP65, 1 row, 9 division units, for standard indoor installations. PE/N





Pluggable AK2 front part, WAGO WINSTA® MIDI, out: 4x5pin DALI blue

Distribution boxes for light controls. AK2 DALI. The front parts of the AK2 DALI series offer solutions when lighting control in building installation technology is implemented using the DALI standard. Just



Junction box with Schuko-outlet duplex IP54

Junction box with schuko-outlet duplex IP54 for wall or roof mounting. The outlet is prewired with EQ 2,5mm². The junction box has an extra large wiring space. Two

AK2-W5 Deksel, 4x5p DALI Wieland zwart , Distribution boxes for light

Distribution boxes for light controls. AK2 DALI. The front parts of the AK2 DALI series offer solutions when lighting control in building installation technology is implemented using the DALI standard. Just



High-quality ceramic ferrule



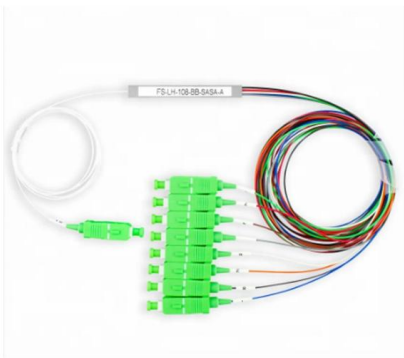
AK2-S L/D data onderbak zwart , Distribution box for data networks. AK2

Distribution box for data networks. AK2 Data. The components of the AK2 Data series offer a modular system for creating a network infrastructure. Based on the AK2 modular system, the enclosures are



AK2 Data basic housing with flat mounting plate

The Consolidation Box from Attema makes it possible to install ICT cabling in a flexible manner, because the installation is divided into two steps. The largest



Adapter A, CommScope Systemax type , Distribution box for data

Distribution box for data networks. AK2 Data. The components of the AK2 Data series offer a modular system for creating a network infrastructure. Based on the AK2 modular system, the enclosures are

Contact Us

For datasheets, pricing, or custom high-speed optical interconnect solutions, please visit:

<https://www.syropy.com.pl>