

Distance between secondary distribution box and wall





Overview

The required clearance in front of the panel depends on what's directly facing it on the opposite wall: 36" - If facing a non-electrical wall. Working space: The front clearance, side clearance, and height clearance requirements for electrical equipment that provide a safe area for maintenance, inspections, and other work. Electrical clearances are the minimum separation distances the National Electrical Code (NEC) requires between wiring, panels, overhead conductors. Generally, distribution boxes can be divided into three levels of secondary protection, that is, three levels of distribution boxes: general.



Distance between secondary distribution box and wall

Ordering information

| NO. | 1 | 2 | 3 | 4 | 5 | 6 |
|--|-------------------|-------------------|-------------------|-------------------|-------------------|-------------------|
| Model | SP1204 | SP1202 | SP1004 | SP1002 | SP1202 | SP1004 |
| Product name | Patch Panel | Patch Panel | Patch Panel | Patch Panel | Patch Panel | Patch Panel |
| Illustration | | | | | | |
| HU | 1 | 2 | 4 | 1 | 2 | 4 |
| Maximum number of ports | 144 | 288 | 576 | 144 | 288 | 576 |
| Product size (including module and assembly) | 482.07*311*114 mm | 482.07*311*198 mm | 482.07*311*117 mm | 482.07*311*144 mm | 482.07*311*198 mm | 482.07*311*117 mm |
| Standard color code | RAL9005 | RAL9005 | RAL9005 | RAL9005 | RAL9005 | RAL9005 |

Electrical Clearances: Requirements and Safe Distances

Electrical clearances set the minimum safe distances for panels, overhead lines, pools, and buried wiring -- and ignoring them has real consequences.

Minimum Electrical Clearance Standards , PDF , High

It includes minimum clearances for indoor and outdoor phases, ground

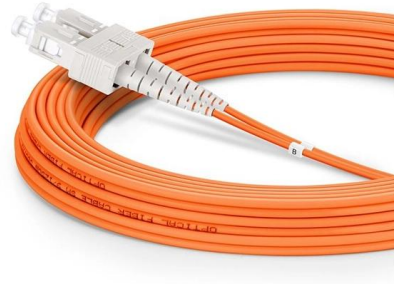


Requirements for Electrical Installations

Electrical equipment shall be selected and erected so as to avoid any harmful influence between the electrical installation and any non-electrical installations envisaged.

Code Q& A by Mike Holt

The NEC does NOT contain any requirement limiting the distance between pull points. Conductors cannot be spliced within a raceway [300-13 (a)], so the maximum distance between pull boxes is



Electrical Panel & Gear Clearance Guide , NEC 2023

Depth: 3 feet minimum from the panel face to any wall or obstruction. Width: If the panel is 24 inches wide, the space must be at least 54 inches wide



Optimal Distance Between Distribution Box and Septic Tank

If the distance between the septic tank and the distribution box is not properly maintained, it can result in uneven distribution of wastewater, leading to over-saturation of certain areas in the



Secondary LV/MV distribution substations in a nutshell

The installation comprises secondary distribution substation at the point of entry, with MV cables to supply subsidiary





Essential Guide: Electrical Panel Access Clearance

They distribute electricity throughout a building and house circuit breakers that protect our electrical circuits from overloads. Access clearance requirements refer



How many distance from ground when install distribution box

Distribution box and switch box should not exceed 30 meters. The horizontal distance between switchbox and fixed electrical equipment should not exceed 3m. Generally, distribution

electrical

How far off the floor should my circuit breaker box be? I'm changing from a 100 to a 200 amp. The lead in wires are underground and come into the bottom of box making them too short to



Electrical Panel Clearance distance

Electrical panel clearance distances are given by the U.S. NEC specifying working distance. Details are given here. This electrical wiring article series discusses procedures for safe and effective visual



How many distance from ground when install distribution box

The total distribution box and switch box should be equipped with leakage protector, and the distance between distribution box and switch box, switch box and electrical equipment should



GUIDELINES FOR USE OF POLE MOUNTED OR PAD/PLINTH MOUNTED DISTRIBUTION

Depending upon the distribution system available in the area, the provisions for entry of cables or for connection with overhead systems at DT primary and the exit from secondary side with underground

What is the Ideal Installation Height for a Distribution Box

Install a distribution box at 4.5 to 5.5 feet high for safety, accessibility, and compliance. This height ensures easy use and protection from hazards.



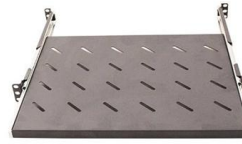
OSHA Electrical Panel Clearance Requirements: Guide

Visual guides can illustrate the necessary distances and help ensure that all employees are aware of the proper clearance specifications, thus promoting



Safety Clearance Recommendations for Transformer

It includes clearance from outdoor liquid insulated transformers to buildings (NEC), Dry type transformer in indoor installation (NES 420.21)



Webit Cabling

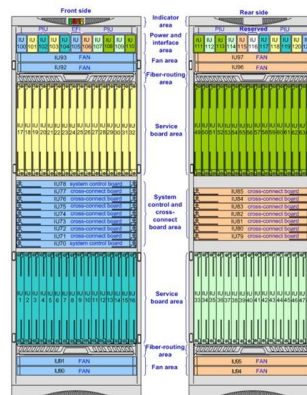
Application Guide for 2023 NESC Table 232-1

30 inches mid-span between secondary wire and comm. cable Rule 235C2b 6 inches between grounded guy and comm. cable Table 235-6 A communication worker safety zone is vertical space



Distance Between Distribution Box and Septic Tank Explained

The distribution box (D-box) is another critical element that directs the effluent from the septic tank to the drain field. Understanding the proper distance between the septic tank and the



What should the distance be between the floor and the

What should the distance be between the floor and the distribution board or main switch? Find out from our team of experts on Your Questions Answered by



Your Guide To NEC Electrical Panel Clearance

In some older buildings, people opt to install the panel too close to the walls or other electrical equipment due to a lack of space. The solution here is to



How to determine the size, installation method and

The distance between distribution box and switch box shall not exceed 30m. The horizontal distance between the switch box and the fixed electrical equipment

Distribution boards components

Distribution boards (generally only one in residential premises) usually include the meter (s) and in some cases (notably where the supply utilities impose a TT earthing system and/or tariff



- Full Customization Support
- Free Design & Fast Sample Service
- Eco-friendly & Certified Materials
- Strict Quality Control





Spacing Requirements for Power Distribution and Terminal Blocks

Power Distribution blocks are evaluated to UL1953, the Power Distribution Block standard and are listed for general installation, meaning they have adequate spacing for most OEM and field applications.



Specifications for Electrical Underground Distribution Systems for Pad

Specifications for Electrical Underground Distribution Systems from Pad Mounted Transformation, Secondary Service Accounts



NEC Working Clearance Requirements: A Visual Guide

This table outlines the specific distances for Condition 1, 2, and 3 scenarios. Additionally, the code specifies requirements for the Width of working space and

Contact Us

For datasheets, pricing, or custom high-speed optical interconnect solutions, please visit:
<https://www.syropy.com.pl>