

# **Distance between lighting distribution box and door**





## Overview

---

Overhead service conductors must stay at least 3 feet away horizontally from any window that opens, as well as from doors, porches, balconies, and fire escapes. This prevents someone leaning out a window or stepping onto a balcony from accidentally touching a live wire. The placement of a light switch near a doorway significantly affects the functionality and convenience of a home. Working space: The front clearance, side clearance, and height clearance requirements for electrical equipment that provide a safe area for maintenance, inspections, and other work. Electrical clearances are the minimum separation distances the National Electrical Code (NEC) requires between wiring, panels, overhead conductors.



## Distance between lighting distribution box and door

---

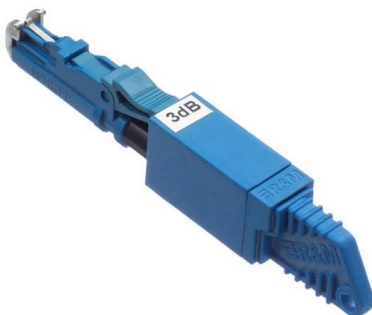
### NEC Article 110.34: Electrical Room "Basics"



These distances indicate space that must be clear to the floor. The chart above illustrates the varying requirements for the depth of the working space in the

### CHAPTER 39 POWER AND LIGHTING DISTRIBUTION

Got a code question? Just ask. I'm here to help you figure it out -- no jargon, no hassle. Ask anything, and I'll do my best to get you what you need.

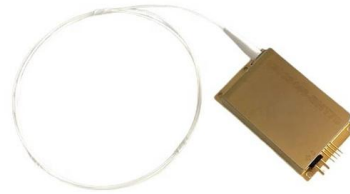


### Regulations / guidance regarding siting of distribution

Hello All Is there any regulations regarding the siting of distribution boards like level area in front of board and dimensions of area in front of board etc?

### How far from a door jamb to put a single gang electrical box for a

I am putting a new switch next to a door. I am trying to figure out what is the norm for how far away I should put the plastic electrical gang box from the door opening.



### NEC Requirements for Panelboards and Load Centers

NEC Requirements for Electric Main Panelboards and Working Space Depth and Mounting Height. Width, Depth and Height for Panels - NEC 110.26



### Safe Clearances for Electrical Equipment: Working

Side clearance: There should be a minimum of 30 inches of clearance from the sides of all electrical equipment, but in no case less than the



### Electrical Equipment Working Space Requirements

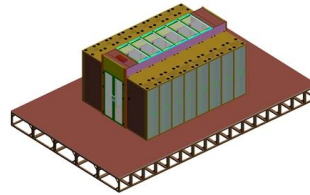
They cover safe working distances for electrical work, including maintenance and operations and zero-voltage verification (ZVV). They apply to workers, supervisors, designers/engineers, and equipment





## What should the distance be between the floor and the

What should the distance be between the floor and the distribution board or main switch? Find out from our team of experts on Your Questions Answered by



## Low Voltage Switchroom Design Guide

Low voltage (LV) switchrooms are common across all industries and one of the more common spatial requirements which need to be designed into a

## Emergency Exit sign viewing distances

Externally illuminated signs are easy to install but they still need an emergency light to illuminate it during power loss. If you have limited space above



## Light Switch Secrets: Switch Distance From the Door?

That's why leaving an 8-inch space between the switch plate and the door frame should ensure that the light switch doesn't interfere with



## NEC + OSHA Electrical Panel Clearance Requirements

Unfortunately, it is often difficult for people to remember exactly how much distance from a panel things can be. Even if they know how much room in inches is required, they may not be able



### Key Points Of Distribution Box Installation

3. Distribution box and switch box shall be installed in ventilated, dry and normal temperature places. It is strictly prohibited to install it in the gas, flue gas, steam, liquid and other harmful media with severe

### How Far Should a Light Switch Be From a Door?

The standard horizontal distance for a light switch is measured from the inside edge of the finished door frame, or casing, to the side of the switch plate. Most residential construction



### Electrical Clearances: Requirements and Safe Distances

Overhead service conductors must stay at least 3 feet away horizontally from any window that opens, as well as from doors, porches, balconies, and fire escapes. This prevents someone



## How to determine the size, installation method and

(1) Wiring method of distribution box 1)  
Generally, the incoming line of power distribution box adopts five wire system, that is, a, B and C three-way phase line



## Size determination, installation method and wiring mode

The distribution box is the central hub of the home circuit and the general control of our daily power consumption. It is an indispensable electrical equipment. If there

## Emergency Lights and Signs Installation Requirements

4.3 When the distribution box and distribution box are installed on the wall, the height from the bottom edge to the ground should be 1.3 m~1.5m, the



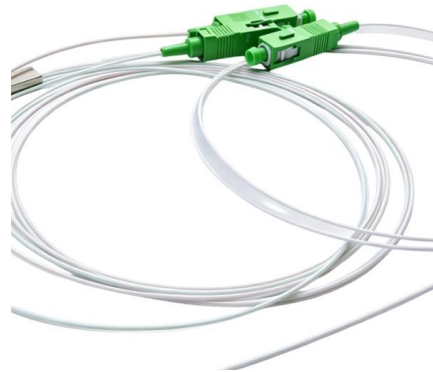
## CHAPTER 39 POWER AND LIGHTING DISTRIBUTION

ICC Digital Codes is the largest provider of model codes, custom codes and standards used worldwide to construct safe, sustainable, affordable and resilient



## Electrical Panel Location Rules , Angi

The electrical panel delivers all your electricity needs, but it might ruin your aesthetic. Here are the electrical panel location rules so you can choose the



## Recessed light clearance distances & codes

This article describes recessed light (downlight, pot light) clearance distances or spacing from insulation or wood or other combustibles in building ceilings, other indoor spaces or outdoors in roofs, soffits,

## Electrical Panel Clearance Requirements , PDF

The document outlines clearance recommendations and requirements for electrical panels based on voltage levels. It provides tables with minimum clearance



## Emergency Lighting Design Guide

Knowledge Learning Hub Emergency Lighting Design Guide - Spacing Tables Part 1B - Spacing Tables The spacing tables show the distance from the wall or door to the first luminaire and then the



### Substation layout

The distance between the high-voltage power distribution device and the roof (except beams) is 0.80m. There should be no exposed lighting or power



### A Better Understanding of NFPA 70E: Electrical Equipment Working

NEC Section 110.26 (A) requires a clear space at least 30 inches wide and 36 inches deep if the equipment is likely to be worked on while energized. This space is necessary not only to

### Safety requirements of distribution box

The distribution box has the characteristics of small size, simple installation, special technical performance, fixed location, unique configuration function, not limited by



### Electrical Panel Locations

Electrical equipment must have a minimum 30" wide clear working space laterally in front of the equipment. This does not have to be centered on



## **OSHA Electrical Panel Clearance Requirements: Guide**

Minimum Clearance Distances for Electrical Panels OSHA and the National Electrical Code (NEC) specify the minimum clearance distances required around electrical



## **Contact Us**

---

For datasheets, pricing, or custom high-speed optical interconnect solutions, please visit:  
<https://www.syropy.com.pl>