

# **Distance between cable tray and cable hole**





## Overview

---

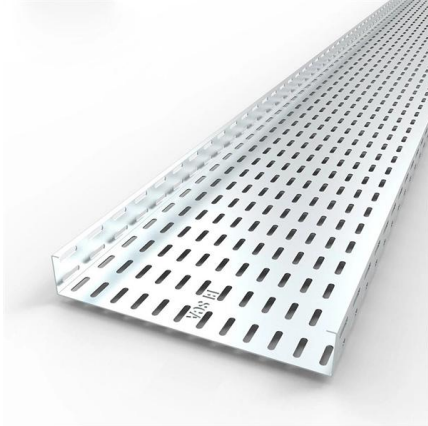
Spacing Standards: Electrical (power) and instrumentation (signal/control) cable trays should maintain a minimum vertical and horizontal distance. The spacing between trays, whether horizontal or vertical, depends on various factors like cable type, environment, and tray material. Proper installation can significantly reduce electromagnetic interference, prevent fire hazards, and improve overall efficiency. Is your cable tray system optimized for safety, dependability, space and cost savings?

Cable tray (or cable ladder) systems are a popular alternative to electrical conduit systems, as they have an outstanding record for dependable service, design flexibility and cost savings in commercial and. When developing our cable support OBO can offer reliable solutions for systems, three attributes are at the routing and fastening cables securely core of what we do: efficiency, resil- for each of these installation challeng-ience and safety.



## Distance between cable tray and cable hole

---



### Cable Tray Dimensions and Specifications as per NEC

Many electrical systems employ cable trays. They route cables safely & efficiently. NEC defines minimum cable tray size & electrical installation

### Precautions for Cable Tray Installation

We have summarized the precautions for cable tray installation to help customers quickly and correctly install cable trays.



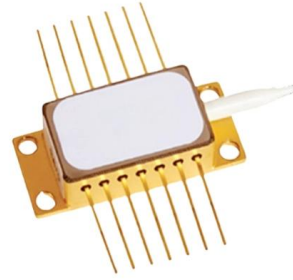
### Guide to cable support systems

The mesh cable trays are suitable for the installation of power cables and cables in various areas of application. The grid spacings mean that cables can be inserted and run out in various directions.



### Annex I

A necessary space must be devoted to workers on the cable trays under the false floor (cable tray modifications, pulling and crimping cables) to avoid walking on it.



### B-Line series Cable Tray Design Considerations

For ladder or ventilated trough trays, the total sum of the cross-sectional areas of all the cables to be installed in the cable tray must be equal to or less than the allowable cable area for the tray width, as



### CABLE TRAY SYSTEMS GUIDE

Commonly called the Load Class, this defines the load-carrying capability of the tray for a specific support span distance. The design and cost of the cable tray is greatly affected by this designation.



### Cable Tray Spacing Standards for Installation and Safety

Discover the essential cable tray spacing requirements for safe and efficient installation. Learn key standards, horizontal and vertical spacing, and more.





## Cable Tray Technical Guide A practical guide to product selection and

Cable tray length is selected based on the load to be supported, the distance between the supports (also referred to as the span), and handling and installation constraints.



### Pre-Terminated Patch Panel

- Standard 19" width
- Max 144 fibers in 1U
- Ultra-High Density Ready



Dual-row, easy install & maintain



Lightweight ABS MPO cassette



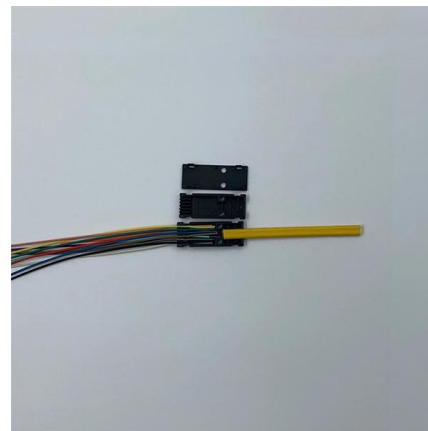
Premium sheet metal with matte coating

## CABLE TRAY SYSTEMS GUIDE

Steel Ladder System Hubbell's NEXTFRAME® Ladder Tray is the effective and widely used cable runway that supports and delivers bundles of cable between cabinets, racks, and closets, along

## Document DICOS

A channel cable tray can be added to an existing cable tray system using the method illustrated in Figure 3-89 to add approved cabling systems. Refer to the loading information of the existing cable



## Amazon : Under Desk Cable Management Tray No Drill, Metal Mesh Cable

?Reduce Safety Risks?Cable tray under desk keeps all plugs away from your kids, no more worry about tripping. Using 2 holes wire tray



## Safety Distance Between Cable Trays: What You Need

Learn the right safety distance between cable trays and ventilation or drainage systems. Follow these expert guidelines to ensure proper function and

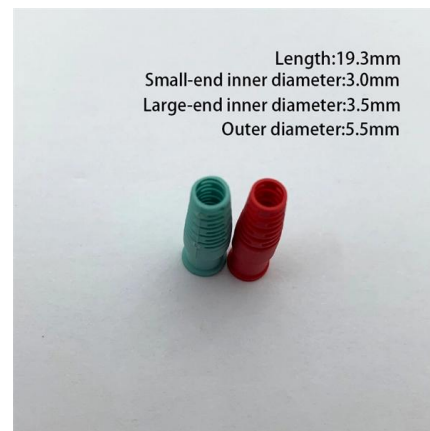


## Safety Distances Between Cable Trays and Pipes

Learn about the importance of cable trays and pipes safety distances in ensuring system reliability. Explore standards,

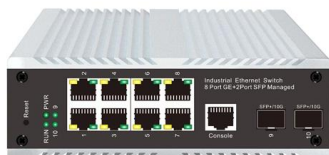
## Cable Tray Support Spacing: Key Guidelines Explained

Explore the essential cable tray support spacing requirements for safe and efficient installations. Learn NEC guidelines for perforated, ladder, and wire



## Typical Design Philosophy of Cable Trays for Power

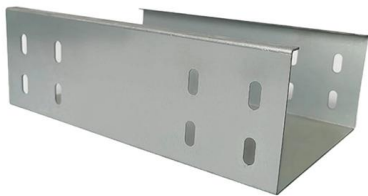
The trays shall be strong enough to keep the deflection of the fully loaded tray within permissible limits. In general, cable trays run in parallel to building walls and





## Best practice guide to cable ladder and cable tray

Cable ladder and cable tray systems The following recommendations are intended to be a practical guide to ensure the safe and proper installation of

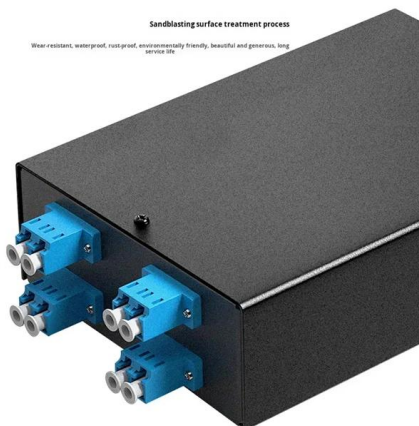


## Cable Tray Design and Standards Guide

2. Design and construction requirements specify that cable trays must be ladder or perforated type depending on cable, fabricated from hot rolled steel sheet. Tray

## Best Practice Guide to Cable Ladder and Cable Tray Systems

The radius for cable ladder and cable tray fittings is usually determined by the bending radius and stiffness of the cables installed on the cable ladder or cable tray.



## Cable Support Distances

Cable Support Distances Although BS 7671 touches on the subject of cable supports, it does not detail specifically what these support distances should be. Section 522.8 (Other Mechanical Stresses (AJ))



### A Guide to Installing and Supporting Electrical Cable Trays

A professional guide to installing electrical cable tray systems per NEC Article 392. Covers support, securing cables, and fill calculations.

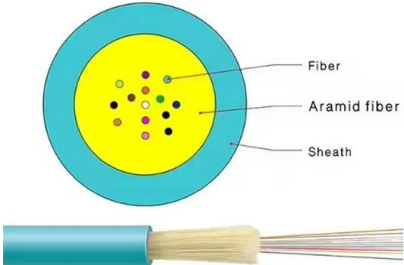


### Core Principles for Electrical and Instrumentation Cable

Spacing Standards: Electrical (power) and instrumentation (signal/control) cable trays should maintain a minimum vertical and horizontal distance. Industry

### Cable Tray SHIB NAL

Securing cables will maintain proper spacing between cables, keep cables in the trays, and confine the cables to specific locations within trays. Those designing and installing the system must determine



### Guide to cable support systems

Universal systems for cable support structures are used for small loads. The systems are suspended from the ceiling with threaded rods, stand-off brackets allow raised floor mounting of cable trays,



## Cable Support Distances

This provides distances for cables based on their diameter and cable type. Prysmian was instrumental in providing this information and an extract is provided in this document.



## GUIDE CABLE TRAYS TECHNICAL

cable trays are equivalent. The mechanical and electrical characteristics, tests, certifications, overall quality management, recommendations mentioned in this technical guide only apply to our own cable

## Contact Us

---

For datasheets, pricing, or custom high-speed optical interconnect solutions, please visit:  
<https://www.syropy.com.pl>