

Direct Sales of Low-Loss FDDI Connectors for Smart Buildings





Direct Sales of Low-Loss FDDI Connectors for Smart Buildings



Fiber Distributed Data Interface (FDDI)

The FDDI specifications define a family of standards for 100 Mbps fiber optic LANs that provide the physical layers and media access control sublayer of the data link layer, as defined by the ISO/OSI

FDDI Optical Fiber Connectors

Find reliable FDDI optical fiber connectors for secure network connections. ZHEFAN offers durable, waterproof, and high-quality fiber optic solutions.



Fiber Optic Connectors Market Size & Demand 2034

The expansion will lead to a 30% growth in multi-mode fiber optic connector sales as mobile data services and smart city projects will increase. The demand for multi-mode connectors is

FDDI Optical Fiber Connector

FDDI (Fiber Distributed Data Interface) connector is a duplex optical fiber connector using two 2.5mm ferrules and has a fixed housing over the ferrules to protect the ferrules from damage. FDDI



FDDI

The fiber distributed data interface (FDDI), which is a standard for optical data communication used in long distance networks, provides connection



FDDI CONNECTOR

The Molex family of FDDI connectors utilize pre-polished and pre-radiused ferrules. When combined with the unique Molex termination process, these connectors produce quick and



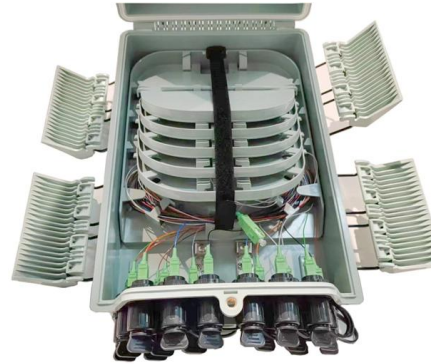
Fiber Distributed Data Interface

Unlike telephone networks, however, an ATM connection is not allocated a fixed bandwidth. The ATM network determines how much bandwidth to allocate so that information is transported with very low



FDDI connector

High quality fibre optic network components from Tech Optics - fibre adaptors, attenuators, connectors (harsh environment and standard) and more.



Fiber Distributed Data Interface (FDDI)

How FDDI Works? Fiber Distributed Data Interface (FDDI) is usually implemented as a dual token-passing ring within a ring topology (for campus

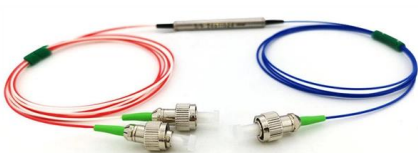
What Is FDDI (Fiber Distributed Data Interface)?

Fiber Distributed Data Interface Design The Fiber Distributed Data Interface (FDDI) design is centered around a high-speed network topology that uses optical fiber as the medium for



What is FDDI? , FS Community

Discover what FDDI is and its role in enhancing network speed and reliability in various sectors. Learn about its key features, and explore its significant applications in enterprise networks,





What is FDDI?

What is FDDI? Explore the history, technical specs, applications, and pros & cons of this technology. Discover its evolution and impact across various fields.



FDDI: Advantages and Disadvantages

Discover the advantages and disadvantages of FDDI, from high bandwidth to cost considerations.

The main fiber optics connectors used in data networking are FDDI

However, FDDI networks are now considered obsolete, and the use of FDDI connectors has declined significantly. ST connectors, on the other hand, were widely used in the past for both



Coax Connectors for flexible Low Loss RF Cables

As during the last years, low loss cables gained more and more popularity compared to traditional RG-type cables due to their superior electrical characteristics, Telegärtner recognizes and acknowledges



CONNECTORS & ADAPTORS

The FSD connector, based on proven 2.5mm ceramic ferrule technology, is a two channel snap-fit connector that combines low loss, typically 0.2dB, with positive side latch mating, polarisation, easy

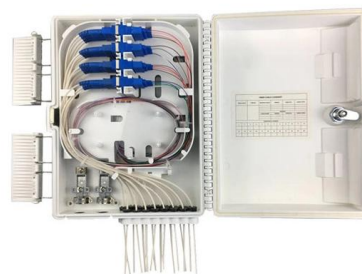


CMU School of Computer Science

å 10 ä ,EURå fä ,? 10 ä ,EURç(TM)¾ 100
ä ,EURç(TM)¾å¸s 100 ä ,EURå f 1000 ä ,EURå
få¸s 1000 ä ,EURâ--<ä ,EUR 101
ä ,EURç(TM)¾é>¶ä

Direct Illuminance-Contribution-Based Lighting Control

With the advent of low-voltage light-emitting diodes (LEDs) and advances in Internet of Things (IoT) technologies, smart buildings have recently



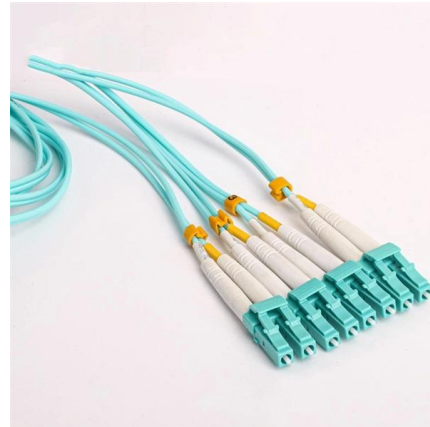
Why connectors are the forgotten link in smart building connectivity

This article examines why connectors are often neglected in smart building design, the risks associated with this oversight, and how proper selection can improve system reliability, scalability, and

What is FDDI, Advantages of FDDI



What is FDDI, Advantages of FDDI Fiber Distributed Data Interface (FDDI) is an expensive LAN technology that employs a pair of fibre-optic rings. One is primary ring and the second ring is used to



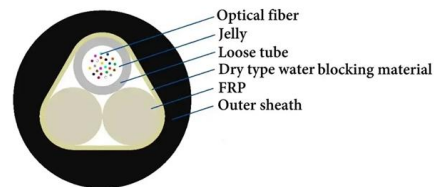
FDDI Connectors & Adapters

Fully compatible with ANSI o Duplex fiber optic system FDDI standard Building wiring Floating and self-aligning ferrule FDDI backbone network design IEEE 802.4 token bus Positive latching mechanism



Premium FDDI Connectors

Shop high-quality FDDI connectors for reliable fiber optic communication. Find durable, waterproof, and explosion-proof options for various applications.



Fiber Distributed Data Interface (FDDI)

An FDDI concentrator (also called a dual-attachment concentrator) is the building block of an FDDI network. It attaches directly to both the primary and secondary rings and ensures that the failure or





FDDI Definition

FDDI networks are comprised of two physical paths, or "rings," that transfer data in opposite directions. The primary ring carries data between systems, while the secondary ring is used



Unlocking FDDI: The Ultimate Guide

Discover the world of FDDI in data communications, its architecture, benefits, and real-world applications in high-speed networking.

Planning for the fiber distributed data interface (FDDI)

FDDI attachment have been too high to allow widespread use of FDDI as a workstation interface, however these costs are falling rapidly as the volume of FDDI sales increases.



Connectors for Smart Building & Factory Applications

This week's Product Roundup highlights connectors for smart buildings and smart factory applications from leading suppliers.



Contact Us

For datasheets, pricing, or custom high-speed optical interconnect solutions,
please visit:

<https://www.syropy.com.pl>