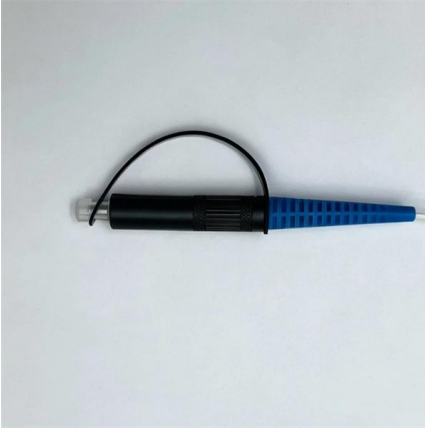


Dimensions of fire-fighting floor electrical distribution boxes





Dimensions of fire-fighting floor electrical distribution boxes

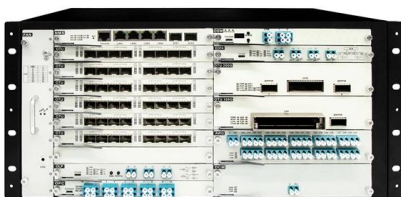
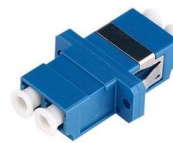


FireBox

All the junction boxes have practical external fastening. In addition, empty boxes able, allowing completely many as 4 sizes here. The FireBox stands out through the halogen-free material,

FRK Series of Fire Rated Floor Boxes

Our new Fire-Resistant floor boxes expand the versatility of our floor box line by providing enhanced, fire-resistant versions of our existing products. All of our fire-resistant products are UL listed and

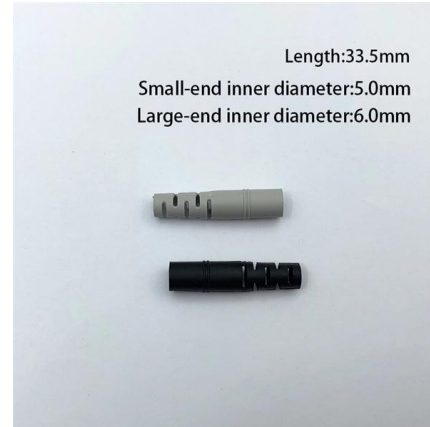


WLBD015

Hubbell's fire-classified floor boxes are an excellent solution when there is not enough capacity in a poke through and the decking must be penetrated for electrical installations.

Technical catalogue Floor distribution systems and systems for

The box has been designed so that it can be easily combined with the Scattoplast and Underfloor distribution systems both for traditional and for raised floors; it can also be used with trunkings for



Prosper Fire Rescue

IFC/NFPA/NEC Guide to Fire Alarm Wiring & Box Installations There are many factors to consider when installing fire alarm wire, raceways, boxes & cabinets comprising a fire alarm system.



Fire Rated Floor Box

Both models include a UL listed 3-hour fire-resistant floor box system comprised of a FireStop box, and four FL-FRK 1 1/2" Intumescent-lined Conduit Assemblies,



Fire Classified Floor Boxes , Floor Boxes , Wire and Cable Management

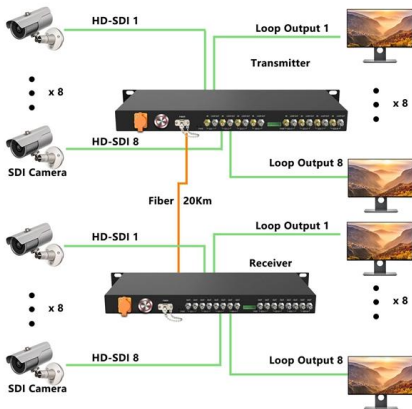
Fire Classified Floor Boxes Evolution(TM) Series Fire Classified Floor Boxes are the latest advancement in the most complete and innovate line of floor solutions in the industry. An ideal option for installation





Fire protection guide for electrical installations

For this reason, electrical installations require special consideration for fire protection. The catastrophic impact of the highly toxic and aggressive fire gases are often underestimated. Estimates suggest



Fire-Resistive Walls and Electrical Boxes

For the two-hours-or-less walls, the first requirement is that the certified electrical boxes be securely fastened to the studs. There is a maximum allowable gap of

Floor boxes

Floor box provides adaptable power and data distribution in raised floors. The system ensures a fast and simple installation. Designed to support Cat 6 structured cabling systems. Lid &



Standard Electrical Enclosure Sizes: Chart, Dimensions

Electrical enclosure sizes are not universal, but most manufacturers follow common size families. This guide explains typical wall-mount and floor



IS 1646 (1997): Code of practice for fire safety of buildings (general

This standard was first published in 1961, revised subsequently in 1982. The present revision is based on the subsequent development and modifications in other regulations such as electrical rules of the



Wall-Mounted vs. Floor-Mounted Distribution Boxes:

Compare wall-mounted vs. floor-mounted distribution boxes. Learn their key differences, uses, pros & cons to choose the right one for your space

Fire protection cable boxes: Spelsberg

All WKE cable junction boxes and junction boxes as well as the WKE AK distribution boards offer electrical intrinsic fire resistance between 30 and 90 minutes (E30 to E90) in the event of fire.



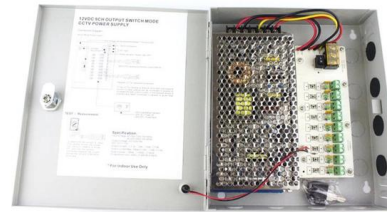
FLOOR BOXES

Wood Frame Floor Boxes Ideal for homes, conference rooms, auditoriums, stages, hospitality, and more FOR USE WITH ALL TYPES OF FLOORING INCLUDING WOOD, TILE, VINYL, TERRAZZO,



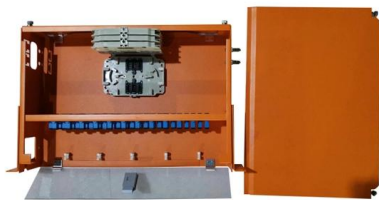
CATALOG Wiring ducts, floor boxes and trunking Easily allows for

ABB's offer for distribution applications includes devices and equipment for managing electricity end-users and optimizing safety and comfort at home, in offices, shops, etc. Now ABB's



Standard Floor Box Sizes (2 Size Charts Inside!)

Floor boxes serve a few key functions: Power Distribution: Providing access to electrical outlets for lamps, computers, and other devices. Data



Evolution(TM) Series Eight Gang Fire-Classified Floor Box

"The Evolution(TM) Series Eight Gang Fire Classified Floor Box has been designed to be installed in above grade concrete floors while maintaining the fire classification



Distribution Boxes Types - The Complete Guide

Types of Distribution Boxes The electrical power distribution boxes are distribution boards or breaker panels. Meanwhile, it supplies current and can





Outlet Boxes for Use in Fire Rated Assemblies

UL evaluates both metallic and nonmetallic outlet and switch boxes for use in fire-resistant rated assemblies, and provides guidance for proper installation in the associated product category guide



The installation requirements for the distribution box

A distribution box is the heart of any electrical system. It takes the incoming power and safely distributes it to different circuits throughout your

2.14 Fire and rescue service facilities

Whilst fire-fighters are professionally trained to deal with all types of fire condition, the fire and rescue service facilities within a building are important



Contact Us

For datasheets, pricing, or custom high-speed optical interconnect solutions, please visit:
<https://www.syropy.com.pl>