

Dimensions of a 400-square-meter cable tray





Dimensions of a 400-square-meter cable tray



Free Cable Tray Sizing Calculator -- IEC, AS/NZS, NEC, BS

The cable tray calculator determines the required tray width and type based on the number and size of cables to be installed, ensuring adequate fill levels and derating compliance.

Cable Tray Capacity Calculator

Cable tray capacity refers to the maximum number of cables that can be installed in a cable tray without exceeding a specified fill ratio. The fill ratio is the percentage of the cross-sectional area of the tray



Cable Tray Size and Dimensions: How to Choose the

Learn how to calculate the perfect cable tray size and dimensions for your electrical project. This guide covers load capacity, fill ratios, and industry

Cable Tray Fill Calculator , NEC 40% Rule , CalcShed

How Cable Tray Fill Is Estimated Cable tray fill is a way to estimate how much space cables take up inside a tray, often expressed as a percentage. Higher fill can make pulling, cooling, and future



Cable Tray Dimensions and Specifications as per NEC

Many electrical systems employ cable trays. They route cables safely & efficiently. NEC defines minimum cable tray size & electrical installation



How To Calculate Cable Tray Size , Step-by-Step Guide

Learn how to calculate cable tray size step-by-step, including formulas, standard sizes, and practical tips. Find out the best practices for



Cable Tray Technical Guide A practical guide to product selection and

A practical guide to product selection and installation This guide for engineers and installers has been developed by ABB as a practical reference regarding cable tray characteristics, installation, and



Cable Ladder Cable Tray Weight Calculation Guide

Cable Tray Weight Calculation: The Basics The Cable Tray Weight Calculation is not a one-size-fits-all process. It can vary depending on several



Cable Tray Sizing

Learn cable tray sizing with accurate width and dimension calculations. Avoid common mistakes for efficient cable management. Read our expert guide now!



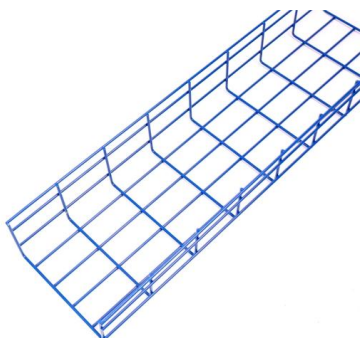
Cable Tray Width, Dimensions and Specifications as per

Learn about cable tray width dimensions and specifications as per NEC standards. Understand types, sizes, materials, and installation guidelines for safe and



GUIDE CABLE TRAYS TECHNICAL

NEMA VE 1-2017 Specifies requirements for metal cable trays and associated fittings designed for use in accordance with the rules of Canadian Electrical Code, Part I and the National Electrical Code®



Cable Tray Size Calculation Guide



This document contains calculations to determine the appropriate size of cable trays between an LV room and electrical room based on the cables being used. It lists



Cable Tray Size and Weight Chart

It lists the cable types, sizes, and quantities for each area. It then calculates the total cable outside diameter, weight per meter, and total weight for each area. Finally,



Cable Tray Fill Calculator

Solid bottom trays: 30-40% for power cables, up to 50% for control/instrumentation The fill capacity of a cable tray refers to the maximum amount of space that can be occupied by cables while maintaining



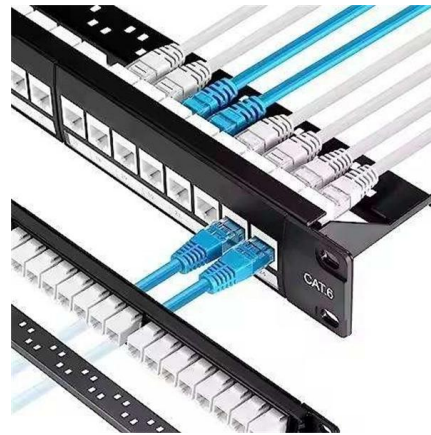
Cable Tray Dimensions Guide: Standard Sizes, Tray

Explore standard sizes by tray type, understand width and depth limits, and see how to calculate and choose compliant cable tray sizes for real projects.



Cable Tray Size Guide: How to Choose the Right Dimensions

Complete cable tray sizing guide with standard size chart, NEC calculation methods, and real engineering examples. Learn how to select the right cable tray dimensions for your project.

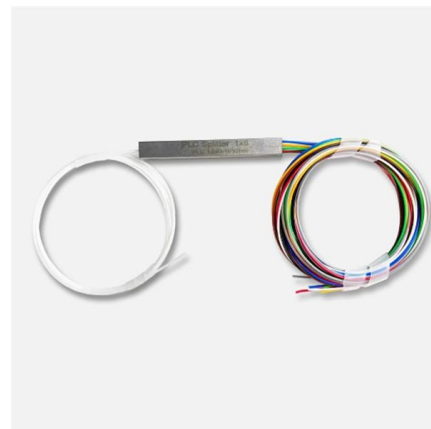


Product Specifications: CABLE TRAY

FDG CABLE TRAY ng; Power, Data, and Audio Visual. A quick and easy system to install without the need for specialised tools or equipment, makes it a first choice for Comm solution that works for your

Cable Tray Width Selection for Installations with 600 Volt Single

Cable Tray Width Selection for Installations with 600 Volt Single Conductor Cables National Electrical Code (NEC) Section 318-11 Ampacities of Cables, Rated 2000 Volts or Less, in Cable Trays. (b)



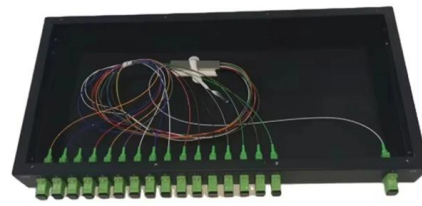
CABLE TRAY

The factory has inaugurated its new manufacturing facilities which is located in the 3rd Industrial Area of Jeddah with a total built facilities of 37,000 squared meters. The facilities include two manufacturing



GUIDE CABLE TRAYS TECHNICAL

In accordance with its continuous improvement policy, Legrand reserves the right to change the specifications and illustrations without notice. All illustrations, descriptions and technical information



How Many Cables Can a Cable Tray Hold? A

How Many Cables Can a Cable Tray Hold? A Comprehensive Guide During the design of a cable management system, one of the most important

Cable Tray Technical Guide A practical guide to product selection and

In designing supports for a cable tray system, consideration should be given to the loads associated with future cable additions and any additional loading that may be applied to the cable tray system (e.g.,

OEM/ODM
CUSTOMIZATION AVAILABLE



CABLE TRAY SYSTEMS GUIDE

The total load supported by the cable tray, uniformly distributed. This will be the combined weight of all of the cables or tray contents, any environmental loads (snow, ice, dust) and any concentrated static



Cable Tray Detailed Drawings and Specs

The document provides specifications for various cable tray dimensions, including sizes of 300mm, 400mm, and 200mm widths, all with a length of 2400mm and a



Product Specifications: CABLE TRAY

FDG CABLE TRAY FDG Cable Tray is designed to continuously support cable systems including; Power, Data, and Audio Visual. A quick and easy system to install without the need for specialised

Cable Tray Size Calculation for Project Engineers

Cable tray size calculation is important for ensuring safe cable installation, proper heat dissipation, and enough spare capacity for future



Cable Tray Size Chart and Selection Guide

For a tray with electrical cable tray dimensions of 300 millimeters width and 100 millimeters depth, the usable area would be approximately 30,000 square millimeters, though actual



Contact Us

For datasheets, pricing, or custom high-speed optical interconnect solutions, please visit:

<https://www.syropy.com.pl>