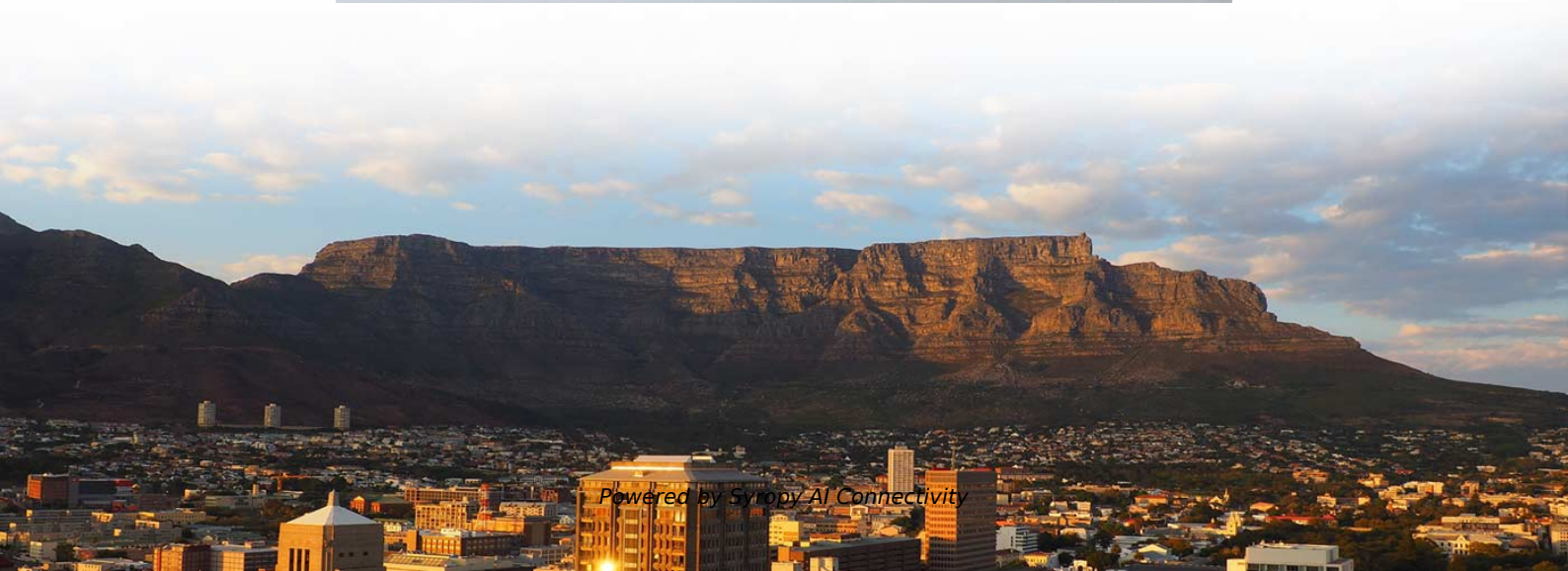


# **Dimensions of a 26-circuit single-row distribution box**





## Dimensions of a 26-circuit single-row distribution box



### Single Row Metal Distribution Box 16 Way Each Row

Single Row Metal Distribution Box 16 Way Each Row DIN Rai Type, Find Details and Price about Metal Load Centre DIN Rail Distribution Board from Single Row Metal

### professional Power Distribution Box manufacturers

What is a power distribution box? A distribution board (also known as panel board, breaker panel, or electric panel) is a component of an electricity supply system

OEM/ODM  
CUSTOMIZATION AVAILABLE



### Distribution Boards & Consumer Units

Clear detailed description of each size and easy to select with the ordering codes. Box with four studs and adjustable nuts for easy fit / easy remove of pan assembly. Generous wiring space. Easy fit of

### CA26V , ABB

ComfortLine Compact distribution board, Surface mounting, 144 SU, Isolated (Class II), IP44, Field Width: 2, Rows: 66, 950 mm x 550 mm x 160 mm Long Description:



### Distribution Board Design: Standards, Surge Protection

Key Components of Efficient Distribution Board Design A distribution board relies on several critical components to ensure safety, reliability, and



### NewCover-2009

Used to mount two Protecta distribution boards, side by side or Protecta distribution board with side extension box. One kit is used for all distribution board configurations.



### CATALOGUE Distribution Board Formula Version

Formula Version ABB's series of standard distribution boards have been designed to make it easy for you to achieve cost-effective and safe electrical installations in apartments, single-family house,





### xComfort BC-A compact distribution boards catalog

Device support as base element, with detachable support rails; large space behind the device support rails permits efficient working and saving time; line entrance from above, below and from the side. BC

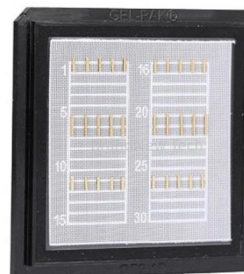


### Residential

I.S.10101 Vega Consumer Units I.S.10101 Vega Consumer Units Consumer units with opaque or transparent doors, 1 - 4 rows, 18 - 72 modules. Insulated unit, color RAL 9010, for energy distribution

### Distribution , Legrand E-catalog International

Aluminium Copper Distribution box - 300 mm<sup>2</sup> - 540 A max. Residential and small commercial panels , Distribution , !



### Distribution Box and Enclosure

Distribution Box and Enclosure, 194E ABS THERMOPLASTIC ENCLOSURE 175X230X120MM W/HOLE, Distribution Box, Accessories, Air Conditioner, Enclosure& nbsp;Distribution Box and



## XL -N 630 3-phase distribution boards XL -N 630 3-phase

Extension boxes To be installed on XL3-N 630 distribution boards (at the top or at the bottom) for extra wiring space or additional functions.



## 26 Way Distribution Board

Power Distribution Box Item Code No.: SX8-A26TWB MOQ: 500 pcs Standard: IEC standard View Detail

## Final\_product\_book\_12\_curve

SINGLE HINGED DOOR Unique Features: o High heat distortion temperature (200°C) as per IS: 10192 o Fire retardant-Class FVø as per IS:11731 Part II or Vø as per UL94 o Non-fusing o Shock-proof & rust



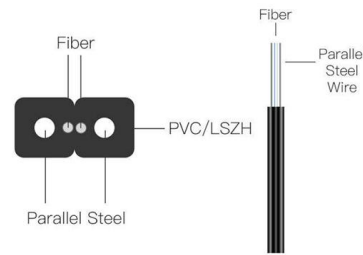
## Microsoft Word

Product Overview Digital Electric Systems offer Standard Modular Enclosures (DIN Rail Row type DB) for LV Distribution Boards that are designed as per the latest edition of IEC 61439 standards. The



### METAL DISTRIBUTION BOX

METAL DISTRIBUTION BOX VM-DBM range of surface type metal distribution boxes or metal clad consumer units are available in up to 13\* different sizes to suit your needs.

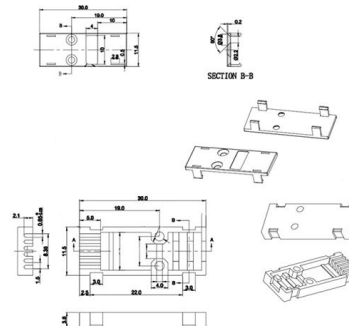


### Schneider SE12B2D Enclosure 2 Row DIN Rail

The Schneider Electric SE12B2D is an Acti 9 Load centre KQ II B extension box suitable for distribution which comes provided with 1 DIN rail, 1 x door, 1 x enclosure and 1 x front cover. This extension box

### Low Voltage Switchboards and Switchgear

o Optional 10X (1X = 1-3/8 inch) box available for meters, protection and control devices Pow-R-Line C designates a family of distribution switchboards, incorporating design concepts that fit the ever



>

APPLICATIONS alfanar Modular Enclosures are standard products suitable for mounting various types of din rail mounted LV components. They are used for a safe and reliable distribution and control of



## Distribution Board

The ROW DB's can be utilized by Panel builders to incorporate in their Distribution boards or other Panel systems suitable for mounting various types of DIN Rail LV Switchgear components.



## Electrical Distribution Box Design Guide

The document provides details for designing the electrical distribution box and circuits for a residence. It includes specifications for the main circuit breaker such

## MCB Box 20/26/36 Way, DB Box 26 Way, DB MCB Box

Futina FTTL series DB box 20/26/36 way is divided into two kinds, flush mounted type and surface mounted type. The DIN-rail can be adjustable, and the two



## Technical catalog Distribution boards Classic range

Horizontal per-phase isolation distribution board with provision for 8 pole (MCB / Isolator / RCD) as incoming, 3 DP MCB / Isolator / RCD as sub-incoming and SP MCBs as outgoing.

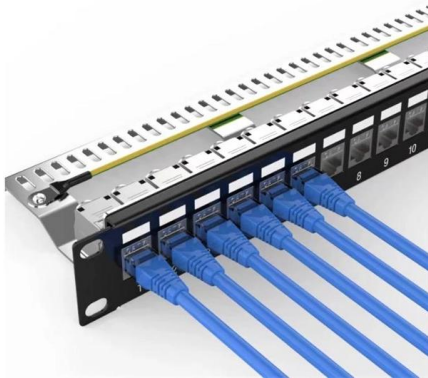




## Single Phase Distribution Box (DB) Wiring Diagram and

Hey, in this article we are going to see the Single Phase Distribution Box Wiring Diagram and Connection Procedure. A distribution board or

### Wall Mount Cabinet Server Racks



### DIVISION 26 - ELECTRICAL SPECIFICATIO

This section specifies general requirements for electrical work. Detailed requirements for specific electrical items are specified in other sections, but are subject to the general requirements of this

## Contact Us

For datasheets, pricing, or custom high-speed optical interconnect solutions, please visit:

<https://www.syropy.com.pl>