

# **Dimensions of Right Angle Bend Cable Trays**





## Dimensions of Right Angle Bend Cable Trays

---



### Types of Bends in Wire Mesh Cable Trays: A Detailed

Wire mesh cable trays are widely used in industrial and commercial installations to support and manage cables effectively. One of their greatest

### CABLE TRAY SYSTEMS GUIDE

The Ladder Tray features light, rugged, tubular steel construction. It is designed for mechanical support and strain relief in long runs of cable and creates a smooth gradual bend for cable. Rail and stringer



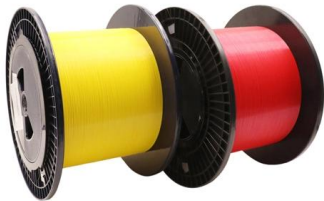
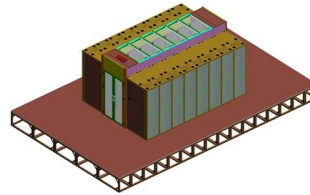
### Bend Cable Trays , Harsha Group

These trays are made from high-quality materials, ensuring durability and longevity. Available in various sizes and configurations, Harsha Group's bend cable trays



### cable tray system

Fittings are sections of cable trays which are joined to other cable trays sections for the purpose of changing the direction, elevation or width of the cable run. All fittings are available in sizes



### Exploring the Different Bending Types for Wire Mesh

Understanding the various bending types for wire mesh cable trays can simplify installation, reduce costs, and improve overall cable management. At

### cable tray(digital copy)

STANDARD RANGE OF PERFORATED TYPE CABLE TRAY  
Duty Width in mm Height in mm Thickness in mm Length in mm Lip in mm



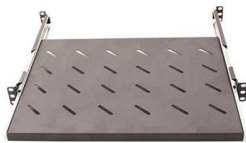
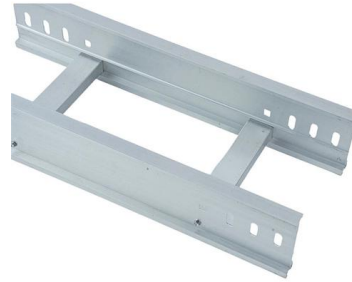
### SWIFTS CABLE TRAY

Swifts cable tray and ladder ranges have been designed and manufactured in Scarborough (UK) since the 1960's. Our inhouse galvanising facility and strict quality control guidelines ensure that every



## CABLE TRAY, CABLE LADDER, CABLE TRUNKING CATALOGUE

STANDARD DIMENSIONS: 00mm. Height (H): 50mm, 70mm, 100mm, 120mm, Material: Mild steel sheet / PO steel sheet. Constructed Type: MIG welding. er coating / Hot dip galvanized / Bare



Webit Cabling

### Cable Tray Design and Components Guide

Tables list standard sizes and specifications for straight and bent cable trays, including width, height, thickness, materials, and finishes. Drawings show

### Bend Cable Trays, Cable Trays, Cable Tray Bend,

Bend Cable Trays Vertical Inner Bend Cable Tray We offer our clients a wide variety of high quality Vertical Inner Bend Cable Tray that is manufactured from the



### Cable support system

The vertical straight connector can be used to connect cable trays with the side height 60mm. Mitre joints that rise and fall up to an angle of 60° can also be realised with this connector.



## Cable Tray Bend

Find here Cable Tray Bend, Horizontal Bend Cable Tray manufacturers, suppliers & exporters in India. Get contact details & address of companies manufacturing and



## Bend Cable Tray

Horizontal Bend Cable Tray is a specific type of bend cable tray used to change the direction of the cable tray horizontally. It allows for smooth and organized cable

## Cable Tray Bend Calculator

For a 90-degree bend, ensure the tray's internal radius meets the cable's minimum bend requirement. If fabricating, mark the side rail at intervals based on the calculated arc length, cut V-notches, and



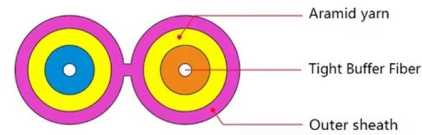
## CableTray Book English

Refer to technical section page A8. Determine the tray series using the NEMA load/ span designations page A14, and sizing cable tray page A21. Select nominal depth and width of tray based on cable



## Cable Tray Dimensions Guide: Standard Sizes, Tray

Explore standard sizes by tray type, understand width and depth limits, and see how to calculate and choose compliant cable tray sizes for real projects.

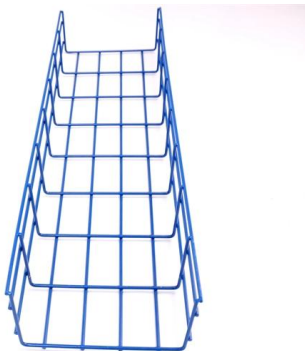


### CABLE TRAY CABLE TRAY

3 4 5 Alternatively, most trays can be hot dip galvanized after fabrication to provide a long, corrosion resistant service life even when d outside. Depending on the design of the tray, you either use pre

### Assembly Guide

Assembly Guide The bends, tees, crosses, risers and reducers of wire mesh cable tray can be easily and quickly made live at the project by using a bolt cutter. Since the jaws of the bolt cutter drags a



### Channel tray

T& B channel tray systems are fabricated from a corrosion-resistant metal (low-carbon steel, stainless steel or an aluminum alloy) or from a metal with a corrosion-resistant finish (zinc or epoxy). The



## Cable tray manual

Nearly every aspect of cable tray design and installation has been explored for the use of the reader. If a topic has not been covered sufficiently to answer a specific question or if additional information is



### 1 R1 Bilmat Engineering Profile.pdf

90o Vertical Bend Light and Medium Duty Straight Flange Perforated Cable Trays

### Make a 90 Bend in Electrical Cable Tray

The Easy Guide to How to make a 90 electrical cable tray bend to measurement of your choice. Great if you are new or just forgot how to do it, this easy



### TECHNICAL AND SIZING DATA

Custom sizing and non-standard tray lengths are available.



## **B-Line series Cable Tray Design Considerations**

As an industry leader in cable tray, Eaton offers one of the widest ranges of cable management solutions available in the market today with its B-Line series portfolio. With unmatched quality and service, we



### **Cable Tray Bends**

Heavy Duty 90 Degree Flat Bend 100mm £ 27.76  
ex. VAT - £ 33.31 inc. VAT Heavy Duty 90 Degree  
Flat Bend 100mm Galvanised £ 34.66 ex. VAT - £  
41.59 inc. VAT

## **Contact Us**

---

For datasheets, pricing, or custom high-speed optical interconnect solutions,  
please visit:  
<https://www.syropy.com.pl>