

# Dimensions for safety markings on electrical distribution boxes





## Dimensions for safety markings on electrical distribution boxes

---

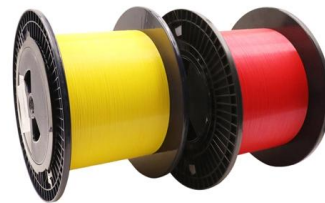


### Symbols for Electrical Construction Drawings

Scope This publication describes graphic symbols used to represent electrical wiring and equipment on construction drawings. In this publication, the term "electrical" is used to include electrical, electronic,

### COMPLIANCE GUIDELINES FOR MARKING AND LABELING

COMPLIANCE GUIDELINES FOR MARKING AND LABELING SYSTEMS Most electrical products and equipment are required to be marked with specific safety-related information and meet permanency



### Outdoor Electrical Distribution Box Specifications: NEC

Complete specification guide for outdoor electrical distribution boxes covering NEC Article 312 requirements, NEMA ratings, sizing calculations, and

### 1910.303

Identification of manufacturer and ratings. Electric equipment may not be used unless the following markings have been placed on the equipment:



### Strategies for electrical labeling and documentation

Electrical equipment must be correctly labeled and documented. Follow these strategies to achieve enhanced safety and documentation. Learning objectives Understand codes, standards, and



### Circuit Numbering and Labeling for Electrical Equipment

This standard describes requirements for numbering and labeling of real property electrical distribution equipment, circuits, and site lighting at Lawrence Livermore National Laboratory.



### OSHA Electrical Panel Floor Marking Compliance

In order to be compliant with OSHA clearance requirements relating to electrical panels, space in front of the panel must be 30" wide or the width of the panel.

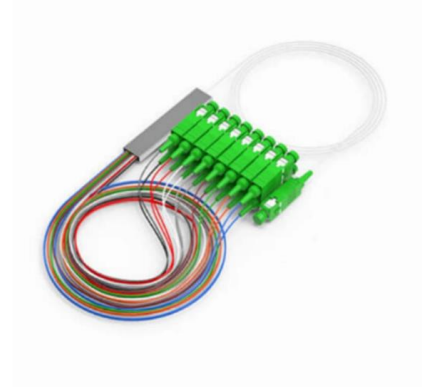


### Electrical Control Panels & Distribution



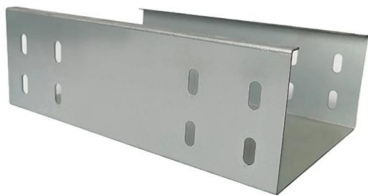
### Boxes: Sizes,

Introduction Electrical control panels and distribution boxes are the backbone of modern electrical systems. From powering homes and industrial



### Global Reference Guide on the Marking of Electrical Equipment

The constructional explosion-protection measures ensure the required degree of safety during normal operation, even under severe operating conditions and, in particular, in cases of rough handling and



### Reference Manual Control Panels compliant with IEC Standards and

This chapter provides an overview of the requirements and markings relating to products and product safety that are common in the European Economic Area (EEA) and on international markets.



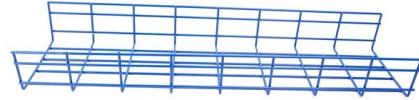
### Electrical Enclosure Safety Signs , Clarion Safety Systems

Clarion's electrical enclosure safety signs help communicate electrical hazard risks. Learn about the importance of electrical enclosure safety visuals here.



## Electrical Panel Compliance Made Clear with Floor Marking

Electrical equipment room with labeled chilled-water pipes and yellow floor markings defining required clear working space for electrical panel



## 1.An Ultimate Guide for Metal Distribution Boxes

A Comprehensive Guide to Metal Distribution Boxes 1. Introduction Distribution boxes are a crucial component of any residential, commercial, or industrial

## Cautions and Requirements for Installation of

Distribution box is a low-voltage distribution device which assembles switchgear, measuring instruments, protective appliances and auxiliary equipment in a closed



## What Is an Electrical Distribution Box? A Complete Guide

What Is an Electrical Distribution Box? An electrical distribution box serves as a centralized unit for distributing electrical power within



## Technical Specifications for Distribution Boxes and Switch Boxes

This document sets forth technical, installation and safety specifications for distribution boxes, switch boxes and cabinets. It stipulates requirements for enclosure materials, installation dimensions, the



## Electrical Panel Compliance Made Clear with Floor Marking

Learn about electrical panel clearance requirements, OSHA electrical panel requirements, and effective floor marking for hazard-free spaces with

## Understanding Distribution Boxes: A Comprehensive Guide

A distribution box is used to receive electrical power from a main supply and distribute it to multiple branch circuits in a safe and controlled way. It



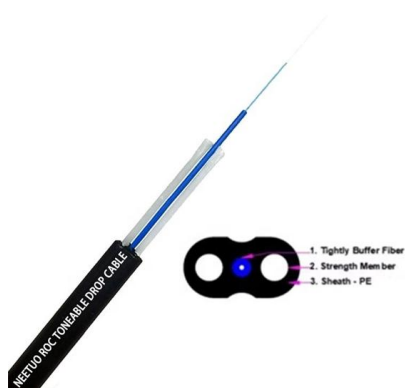
## safety labels for electrical equipment & facilities management

When designing safety labels for use on electrical equipment, machinery and within a facility, there are application-specific codes and general codes that apply to all labels.



## How To Label Your Electrical Panel for Home Safety

The electrical panel, or breaker box, is the control center that connects your home to the main power supply and distributes electricity



### Electrical

Subclassification labels for all emergency power system equipment as listed for equipment identification labels, and all junction and pull boxes. Identify fuse type and size on the cover of fusible equipment.

## The Complete Guide to Distribution Box: Installation, Types & More

The primary purpose of a distribution box is to provide a safe and organized way to control electrical circuits. When an electrical fault occurs, such as an overload or short circuit, the protective



### Distribution Boxes Explained: Types, Functions, and

Learn about distribution boxes, their types, functions, and safety features to ensure efficient and secure electrical power distribution in any building.



### Safety requirements of distribution box

The distribution box has the characteristics of small size, simple installation, special technical performance, fixed location, unique configuration function, not limited by



### How to Read and Interpret Your Distribution Box Labels

Understand your distribution box labels to identify circuits, improve safety, and troubleshoot electrical issues in your home with confidence.

### Re: Marking of Electrical Equipment

Electrical Equipment Did You Know? Proper labelling at all distribution points, circuit breakers, fuses and switches is required during installation, as well as whenever .



## Contact Us

---

For datasheets, pricing, or custom high-speed optical interconnect solutions, please visit:  
<https://www.syropy.com.pl>