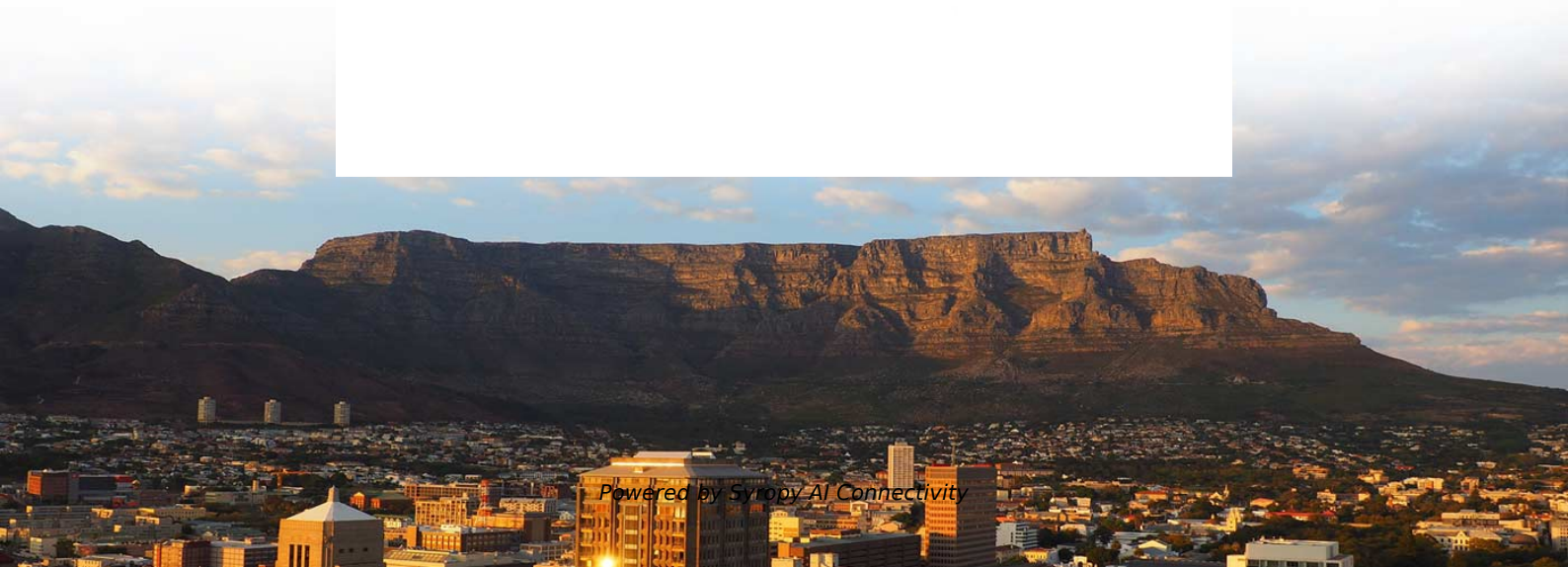
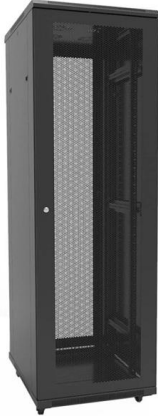


Dimensions and parameters of integrated power supply cabinet for emergency communication





Dimensions and parameters of integrated power supply cabinet for



SMPS Integrated Power Supply Specification

SMPS Integrated Power Supply Specification This 50-page document is a draft specification for switch mode power supply (SMPS) based integrated power

Telecom Cabinet with Integrated Power & Battery for

Durable telecom cabinet with integrated power supply and battery storage, designed to ensure reliable operation in demanding environments.



Custom Power Supply Cabinets , Riteoptic

Integrated Power Supply for Micro Station Riteoptic integrated power system is a miniaturized power outdoor cabinet system for the communications industry. The



A Comprehensive Guide To Emergency Communication

At their core, emergency communication shelters are self-contained units housing comprehensive communication equipment, power systems, and



Integrated PSUs Provide Power Management Solution , DigiKey

An integrated power supply unit can meet a range of building codes while providing DC rails, battery management, status, and stable communications.



Base Station Energy Cabinet

In today's distributed telecom and communication networks, dependable energy systems are essential for ensuring uninterrupted service. Huijue's Base Station Energy Cabinet integrates mechanical



Emergency Power Systems & EPS Emergency Power

EPS Emergency Power Systems (EPS is abbreviation of Emergency Power Supply), specifically designed for fire equipment and special load or lighting. When the AC



NFPA 72 Chapter 24 Emergency Communications Systems (ECS)

24.1 Application. 24.1.1 The application, installation, and performance of emergency communications systems and their components shall comply with the requirements of this chapter.



Industrial electrical cabinets and technical parameters

Industrial electrical cabinets are electrical cabinets used in all industries and must ensure the criteria of durability, stability, continuity and

Uncovering the Secrets of Power Distribution Cabinets:

Explore power distribution cabinets! This comprehensive guide unveils secrets of PDUs, electrical centers, and power distribution in data centers.



Steel Outdoor Telecom Ac Cabinet at INR 12459/piece in

The outdoor integrated power supply cabinet provides a complete set of solutions for the outdoor working environment and safety management of the



Power Supply Cabinets

The indoor and outdoor cabinet systems enable smooth operation and their modular designs provide operational flexibility. They feature power supply, distribution,



DC power supply cabinet working principle and role

DC power supply cabinet is referred to as DC cabinet, its role to provide stable DC power supply to power-using equipment, a power distribution



SMPS BASED INTEGRATED POWER SUPPLY (IPS)

SMPS BASED INTEGRATED POWER SUPPLY (IPS)
RESEARCH DESIGNS & STANDARDS
ORGANIZATION



MTS9000A Integrated Cabinet IP55 Waterproof Telecom Outdoor

MTS9000A Integrated Cabinet IP55 offers a robust, waterproof solution for telecom equipment. With 40U space, optional power and battery, it ensures reliable communication., Alibaba .



24 kW Telecom Power Cabinet with Rectifier

To meet the comprehensive power needs of such networks, it seamlessly combines high-efficiency rectifiers, AC/DC power distribution, surge protection, and optional



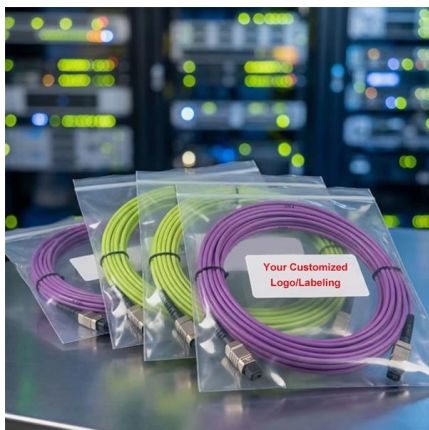
WORLD WIDE WEB JOURNAL Home

O'Reilly & Associates, Inc. 103A Morris St.
Sebastopol, CA United States

Final IPS Specification amdt 1

1.1 This specification covers the requirements of SMPS based integrated power supply system (IPS) suitable to work upto 15KVAsignalling load in RE & Non-RE areas at Stations/LC Gate/IBH/Auto Hut.

MTP MPO SC-Type Fiber Adapter



Outdoor Cabinet Integrated Power Supply Cabinet 48V Outdoor

The CNTCE product line incorporates design flexibility to quickly customize dimensions and functionality. When combined with our optimized manufacturing facilities, customers get a fast "right fit" solution for



Exploring the Amperage Needs of Communication

Image Source: pexels Amperage plays a vital role in the performance of communication cabinet power supplies. I've seen how mismatched amperage



TS 102 181

IoT communications where physical and virtual "things" have identities, physical attributes, virtual representation, use interfaces to be integrated into the information network where they support the

Final LC1-IB_PS_RDSO-SPN_____ -2014 -2

The manual shall include detailed design of the LC-IB POWER SUPPLY /modules, dimensional layout drawings, schematic diagrams, and detailed interconnecting drawing of all sub systems.



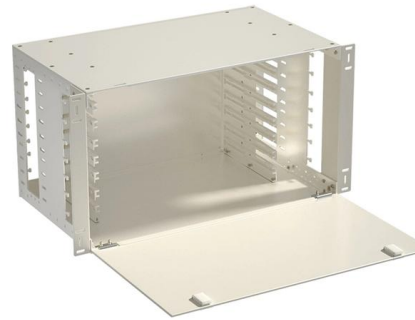
communication cabinet-Outdoor cabinet-Shenzhen Yitong Technology

The outdoor communication integrated power cabinet solution is designed for industries such as government, power, military, banking, telecommunications, education, hospitals, airports, railways,



Eltek 3030 Cabinets , Telecom Enclosures , Alpine

Dimensions: 30" x 30" x 82" Weight: 275 lbs. The Eltek 3030 cabinet family is designed for a variety of applications and can be tailored to fit customer specific

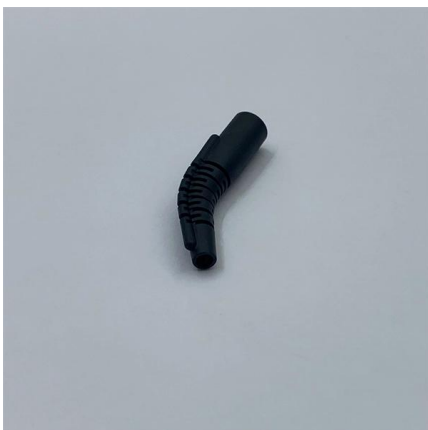


MNS® Low Voltage Distribution Board and Power Cabinet

MNS® Low Voltage Distribution Board and Power Cabinet Technical Info -- From the sub distribution to factory power supply, from the general industry to the marine, nuclear power plant, MNS® power

SOETECK UPS Input/Output Power Distribution Cabinet

Designed for critical infrastructures such as data centers, hospitals, and communication hubs, it ensures uninterrupted power flow with integrated input/output handling, surge protection, and easy maintenance.



Enclosure 6150 20kw Hex Aircon , PDF , Power Supply

The power system offers 27kW of power in total and provides 20kW of -48V DC power for both internal and external consumers. The enclosure can support up to



Contact Us

For datasheets, pricing, or custom high-speed optical interconnect solutions,
please visit:

<https://www.syropy.com.pl>