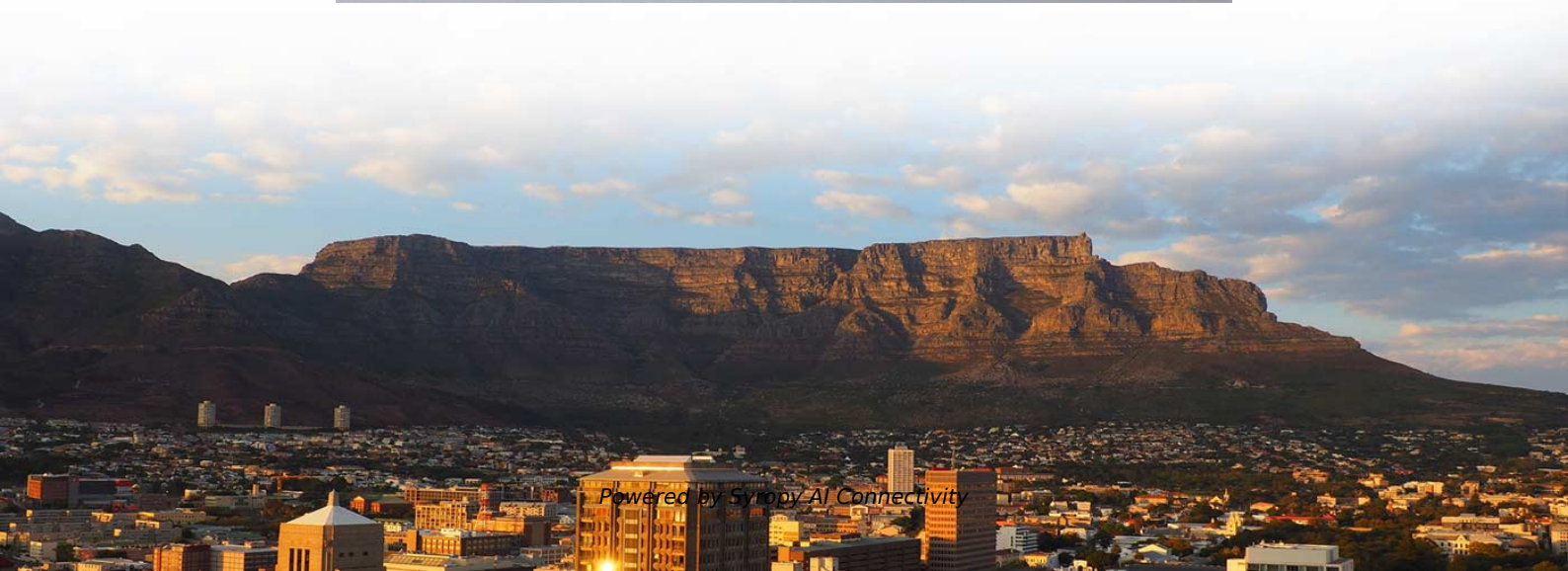


Dell Fiber Optic Switch Parameters





Dell Fiber Optic Switch Parameters



Support for PowerSwitch S5224F-ON , Manuals & Documents , Dell US

Discover manuals and documentation for your PowerSwitch S5224F-ON. Choose a product or enter your Service Tag for customized content.

Dell EMC Networking

6 Dell EMC Networking -Deploying Native Fibre-Channel, 1.0A Configuration Details A.1 S4148U-ON as FC Native Switch 1. Enable FC feature and create domain ID a. Switch# conf t b. Switch



Performing Fiber Optic Cable Tests Using CLI Commands, Managing

Managing Device Security Use the Management Security page to set management security parameters for port, user, and server security. To open the Management Security page, click

MXG610s Fibre Channel Switch Module Setup Guide

Dell EMC recommends configuring the switch module through the Dell EMC OpenManage Enterprise -- Modular (OME-M) graphical user interface (GUI). Use this management GUI to configure the switch



MXG610s Fibre Channel Switch Module Installation Guide May 2021

NOTE This equipment contains optical transceivers, which comply with the limits of Class 1 laser radiation. Figure 1. Class 1 laser product tag NOTE When no cable is connected, visible and invisible



MXG610s Fibre Channel Switch Module Setup Guide

MXG610s Fibre Channel Switch Module Setup Guide Supporting fabric OS 8.1.0_Inx and 9.0.1a May 2021 Rev. A01 Notes, cautions, and warnings NOTE: A NOTE indicates important information that



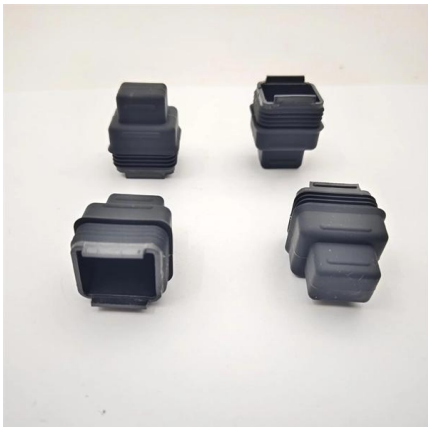
Optional

Home > Networking Solutions > Modular/Blade Switches > MX-Series Modular Switches (PowerEdge MX) > Guides > Dell PowerEdge MX Networking Deployment Guide > Optional - Configure Fibre



Connectrix: How to troubleshoot Fibre Channel node to switch

This article explains how to troubleshoot Fibre Channel node to switch port or SFP communication problems by elimination.



2050N Series S4128F-ON, S4148F-ON, and S4148FE Installation

S4128F-ON I/O-side view 1 Twenty-eight SFP+ optical ports 2 Two QSFP28 optical ports 3 Micro USB-B console port 4 USB Type-A Figure 3. S4148F-ON I/O-side view 1 Forty-eight SFP+ optical ports 2

Optional

This document is an overview of the architecture, features, and functionality of the PowerEdge MX networking infrastructure, including the steps for configuring and troubleshooting the PowerEdge MX



Link between switches not working , DELL Technologies

I have 2 Dell Switches (A S5248F and S4148F) and i'm trying to have a link between them with a 10G SFP+ cable (P/N: 0358VV). Now, in the console i see that the port recognize the cable



Dell EMC Networking Fibre Channel Deployment with S4148U-ON in

Each S4148U-ON switch is placed in F_port mode and acts as an FC switch. This enables direct connections to N_port devices such as FC storage and server FC HBAs without the need for



Performing Fiber Optic Cable Tests Using CLI Commands, Managing

, support II Performing Fiber Optic Cable Tests Using CLI Commands The following table contains the CLI command for performing fiber optic cable tests. Table 6-29. Fiber

Dell 9.10(0.1) Configuration Guide for the S5000 Switch

NOTE: A NOTE indicates important information that helps you make better use of your computer. CAUTION: A CAUTION indicates either potential damage to hardware or loss of data and tells you



Dell PowerSwitch S5200F-ON Series Setup Manual

View and Download Dell PowerSwitch S5200F-ON Series setup manual online. PowerSwitch S5200F-ON Series switch pdf manual download. Also for:



Dell Networking N4000 Series Configuration Manual

View and Download Dell Networking N4000 Series configuration manual online. stackable Layer 2 and 3 switches. Networking N4000 Series switch pdf manual



The Show fiber ports optical transceiver port detail command

When the show fiber-ports optical-transceiver port detailed command is run several times without changing the status of the PowerConnect 6024 and 6024F ports, different results are displayed.

Port Speed Options in the SFP28 Ports in Dell EMC Networking

N2200X-ON Series switch models do not support 10Mbps, 100Mbps, 2.5Gbps and 40Gbps in SFP28 ports. NOTE: All four SFP28 ports must be configured to operate at the same speed.



Dell EMC Networking Fibre Channel Deployment with S4148U-ON in

In a leaf-spine data center environment, two Dell EMC Networking S4148U-ON switches running OS10 Enterprise Edition (OS10EE) may be used as a leaf pair with Ethernet ports connected to spine



Dell PowerConnect 8024

Hi there, --EDIT-- apologies for those reading the previous version, I meant finding the info via console - command line interface connected to the switch itself anyone knows how to find



Configure interfaces , Dell EMC SmartFabric OS10

This document provides Dell EMC SmartFabric OS10 Full Switch mode configuration examples for a VxRail 4.7 cluster or a VxRail 7.0 cluster deployment using Dell

DELL S4048-ON CONFIGURATION MANUAL Pdf

View and Download Dell S4048-ON configuration manual online. PS Series. S4048-ON switch pdf manual download.



LoRa handheld portable base station



Dell PowerSwitch S5448F-ON

High-performance, high-density open networking 100/400GbE multi-rate aggregation switch The S5448F-ON 100/400GbE fixed switch comprises Dell Technologies' latest disaggregated hardware



Optional

This document is an overview of the architecture, features, and functionality of the PowerEdge MX networking infrastructure, including the steps for configuring and

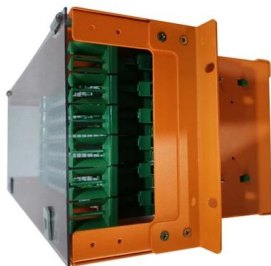


DELL EMC MXG610S FIBRE CHANNEL SWITCH

The MXG610s is a high-throughput, high-density, low-latency Fibre Channel IO Module purpose-built for the PowerEdge MX7000, optimized for flash storage and highly virtualized server environments.

DELL EMC MXG610S FIBRE CHANNEL SWITCH

It includes eight SWL optical transceivers (SFP+) which auto-negotiate to 32/16/8 Gbps FC, and includes Inter-Switch Links (ISL) Trunking, Fabric Vision and Extended Fabric licenses pre-installed.



Dell networking transceivers and cables

Dell Technologies provides optical and cabling options for each Ethernet speed. Long- and short-range optical connectivity options are suited to a wide range of data center and campus applications.



Supported cables and optical connectors

This document is an overview of the architecture, features, and functionality of the PowerEdge MX networking infrastructure, including the steps for configuring and



Contact Us

For datasheets, pricing, or custom high-speed optical interconnect solutions, please visit:

<https://www.syropy.com.pl>