

Delivery period for EPON equipment LPO





Delivery period for EPON equipment LPO

5-INCH COLOR TOUCHSCREEN

Intuitive operation, easily accessible with just one touch



Support

If the EPON system contains a small number of ONUs, you can manually bind ONUs to ONU ports. If the EPON system contains a large number of ONUs, use batch ONU binding or automatic ONU

Ultimate guide to local purchase orders and local

Risk Before applying for LPO financing, a business needs to ensure that they can fill that order. If the business fails to deliver on the order, they will



Support

An EPON system must complete ONU registration, extended OAM connection establishment, and bandwidth allocation before it can transmit data. EPON uses the extended OAM protocol defined by



What is a Local Purchase Order? [Key Facts and Details]

In simple terms, a Local Purchase Order better known as LPO is a commercial document issued by a client or buyer to a vendor or seller for the



FS Community

Hier sollte eine Beschreibung angezeigt werden, diese Seite lässt dies jedoch nicht zu.

Passive Optical Network Equipment Market Report 2026

What Is Covered Under Passive Optical Network Equipment Market? Passive optical network (PON) equipment refers to the components and devices used in a



How To Write a Purchase Order Letter (Template, Example and Tips)

Learn how to write a purchase order letter with steps, a template and an example to help you create your own document.

Through the extended OAMPDU, the connection request and response between OLT and ONU devices can be completed, enabling remote operation, maintenance, and management of ONU



What is EPON (GEPON) OLT: Functions, Types,

EPON OLT (optical line terminal) is a device that acts as the service provider endpoint of a passive optical network. It connects to the Ethernet switch

Cable EPON Gear Makes the Grade

In what could be a big boost for the cable industry's business services efforts, CableLabs has approved the first six equipment vendors for Ethernet Passive Optical Network (EPON) products



Guide: define local purchase order

Learn what a local purchase order (LPO) is, how it works, why it matters, and how to implement strong controls. Compare LPO vs other PO types, see examples, steps, KPIs, risks, and



GPON vs EPON, What's the Difference?

Compare GPON vs EPON for your FTTH deployment. Learn bandwidth, scalability, QoS, and cost differences to choose the best PON



EPON Explained: Unlocking High-Speed Fiber Networks

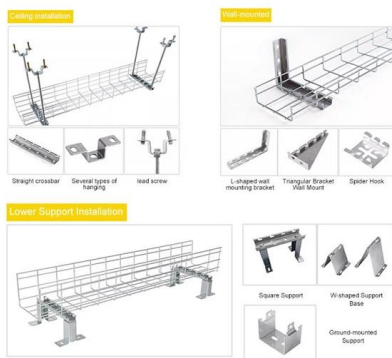
In today's connected world, EPON (Ethernet Passive Optical Network) is a game-changer for delivering blazing-fast internet. This guide dives

Lpo Training As Per Procedure 1034 Rev 4 , PDF

Lpo Training as Per Procedure 1034 Rev 4 - Free download as PDF File (.pdf) or read online for free.



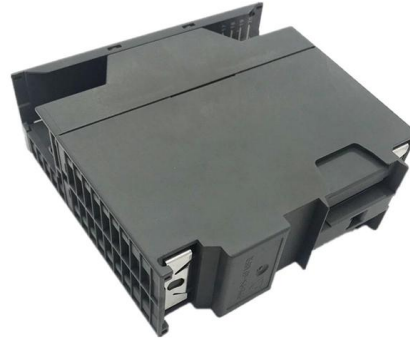
INSTALLATION METHOD



Ethernet Passive Optical Networks

Ethernet Passive Optical Networks Definition Ethernet passive optical networks (EPON) are an emerging access network technology that provides a low-cost method of deploying optical access

To ensure high reliability for the trunk fibers and OLTs in an EPON system, you can add two OLT ports on one EPON card or on two different EPON cards to a fiber

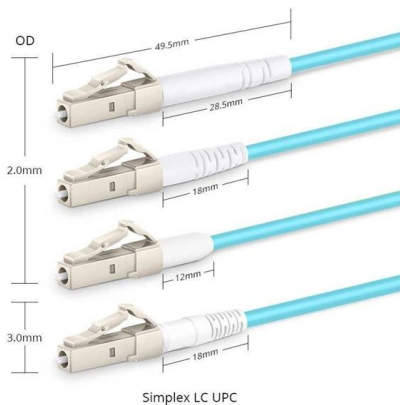
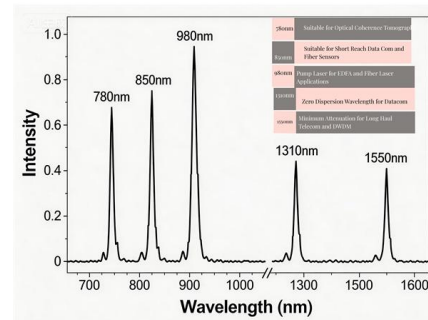


How to Create a Local Purchase Order (LPO)

One of the easiest ways to do this accurately and efficiently is to use the LPO creation tool that's offered on MoversPay with a Premier membership.

A Comprehensive Guide to GPON and EPON Technologies in PON

Combining the strengths of PON and Ethernet technologies, EPON features low cost, high bandwidth, scalability, compatibility with existing Ethernet, and easy management, making it a



EPON, a long-haul Ethernet access technology

EPON is a long-range Ethernet access technology based on fiber optic transport network. EPON adopts a point-to-multipoint architecture, where a

LPO Terms & Condition - Airmech W.L.L. - Mechanical, Electrical and

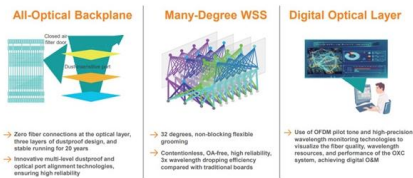


LPO Terms & Condition - Airmech W.L.L. - Mechanical, Electrical and Steel Fabrication Engineers and Contractors LPO Terms & Condition



EPON (IEEE 802.3ah)

SIEPON aims to address EPON service interoperability, particularly between IEEE 802.3ah (1G EPON) and IEEE 802.3av (10G EPON) standards. The first official standard, IEEE 1904.1, was published in



Support

The two OLT ports can reside on one EPON card or on two different EPON cards. The OLT port assigned first acts as the master port, and the other OLT port acts as the subordinate port.



DOCSIS® Provisioning of EPON Specifications DPoEv1.0

Comcast Corporation, Time Warner Cable, and Bright House Networks collaborated to develop the interoperability requirements to support business services products using Ethernet Passive Optical



What is EPON? Passive Optical Network Solution

Meanwhile, the foundation of EPON is Ethernet, and the related components and equipment of Ethernet have the lowest prices. Using EPON as an access network has low cost, good universality,



PON, EPON, GPON: Everything You Need to Know

GPON is the new-generation standard since it is more efficient than EPON. There is quite a bit to know about fiber optic networking and PON, but this page covers the



Support

The OLT manages ONUs in the EPON system and forwards traffic between the EPON system and the IP network. · ONU--A device connected to customer premises equipment such as PCs, set-top



What are EPON OLT and EPON ONU?

EPON OLT, also called an optical line terminal, is a device which serves as the service provider endpoint of a passive optical network. It provides two main functions: To perform conversion between



Contact Us

For datasheets, pricing, or custom high-speed optical interconnect solutions, please visit:

<https://www.syropy.com.pl>