

Debugging the 24-core remote optical cable





Debugging the 24-core remote optical cable



Breakout Indoor Cable OS2, 24-Core, LC/UPC-LC/UPC

High-quality LC-LC single-mode (mono-mode) breakout installation cable for indoor (inside buildings). Multi-purpose cable with 24 cores in tubes with aramid yarn

Using physical DMA provided by OHCI-1394 FireWire controllers for debugging

Drivers ¶ The firewire-ohci driver in drivers/firewire uses filtered physical DMA by default, which is more secure but not suitable for remote debugging. Pass the `remote_dma=1` parameter to the driver to get



The Essential Guide to Fiber Optic Cable Core:

Discover the vital role of the fiber optic cable core in transmitting light signals. This essential guide covers functionality, types, and applications of

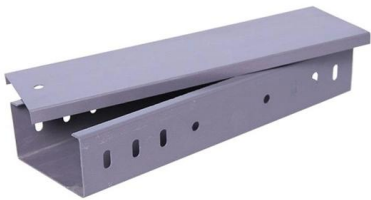
Using physical DMA provided by OHCI-1394 FireWire controllers for

The firewire-ohci driver in drivers/firewire uses filtered physical DMA by default, which is more secure but not suitable for remote debugging. Pass the `remote_dma=1` parameter to the driver to get unfiltered



A Complete Guide to Android ADB Wireless Debugging

This Android 101 guide explains how ADB works, what Android ADB wireless debugging is, the prerequisites for using Android Wireless Debugging,



The Wrong Connection May Happen for 24core MPO/MTP Cabling

Although the 24-core MTP/MPO fiber optic jumper solution is being welcomed by most people, many people still don't really understand MPO/MTP connection. Below we briefly cite two



Using CAN FD for Remote Hardware Debugging of

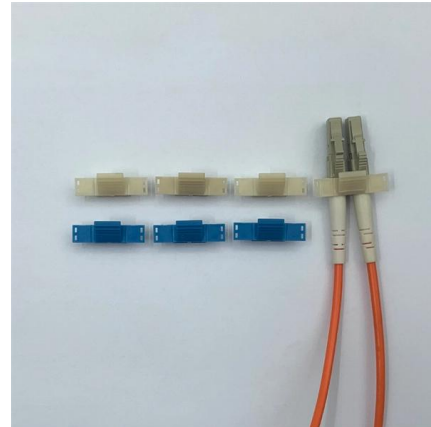
The article discusses a novel approach to hardware debugging using ARM Cortex-M devices over a CAN bus, instead of traditional methods requiring





Training Basic Debugging

Before you can start debugging, the debug environment has to be set up. An overview on the most common setups is given in "Establish Your Debug Session" (tutor_setup.pdf).

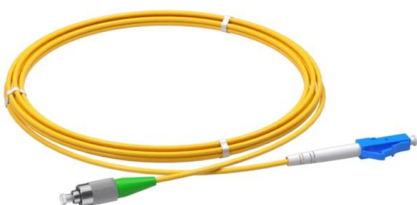


How Many Core In Fiber Optic Cable Do I Need

For example, if you have three optical fiber access switches, you need to have three cores. (actually use a four core optical cable) This is because apart

Remote Debugging with DevContainer and VS Code

This article discusses the use of VS Code and DevContainer for debugging embedded applications through USB debug probes. It explains



24 Core and 48 Core Fiber Optic Cable

24 Core and 48 Core Fiber Optic Cable Fiber optic cable is a cable containing one or multiple optical fibers that are used to transmit the signal. The optical fiber



6 core Fiber Optical Splicing With 24 Port LIU

6 core Fiber Optical Splicing With 24 Port LIU ,, Full Installation ,, Beginner Watch this videoFiber optic splicing is the process of joining two fiber opti



How is remote debugging over 1394 cable working?

You can use the following procedure to establish a remote debugging session: On the host computer, enter the following command in a Command Prompt window. windbg -server

8 core, 12 core, 24 core MPO connector

Compared with MPO-8-core or MPO-12-core systems, MPO-24 systems are more widely used in parallel applications. 100G SR-10 applications require multimode fiber in a 10piar 10x10G



24 core hat -type optical cable joints

24 core hat-type optical cable joints, also known as fiber optic splice closures, are an essential component in fiber optic communication networks. These joints allow for the connection



Link Diagnostic Per Port

show show interfaces interfaces ib ib internal internal spine spine link-diagnostics link-diagnostics When debugging a system, it is important to be able to quickly identify the root of a problem. The Diagnostic



Integrate Type 12/24 Core MPO Cable OTDR

This advanced device integrates critical testing functionalities including a light source, power meter, and end face detector, making it an all-in-one

24 Core Fiber Optic Cable, Armoured, 1 Km

Paragon Network Services - Offering 24 Core Fiber Optic Cable, Armoured, 1 Km at INR 8/meter in New Delhi, Delhi. Get Armoured Fiber Optic Cable at lowest price ,



InsPectInG & cleanInG Multi-Fiber OPTical cOnnectOrs

These inspection tips are interchangeable and designed with a unique optics architecture, which enables the probe to interface with every connector and application in your network.



Link Diagnostic Per Port

The Diagnostic commands enables an insight into the physical layer components where the user is able to see information such as a cable status (plugged/unplugged) or if Auto-Negotiation

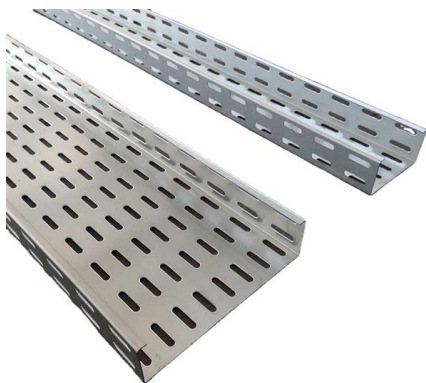


GitHub

Library for Arduino to debug projects over WiFi, with web app or telnet, with print commands like Serial Monitor - JoaoLopesF/RemoteDebug

How to Use 24-Fiber MPO/MTP Cabling in 40G/100G

24-core MTP/MPO cabling is an advanced solution that stands out for its ability to support higher connection densities compared to the conventional 24



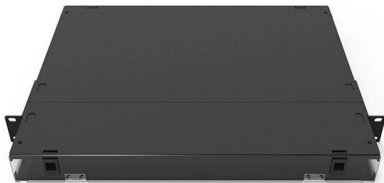
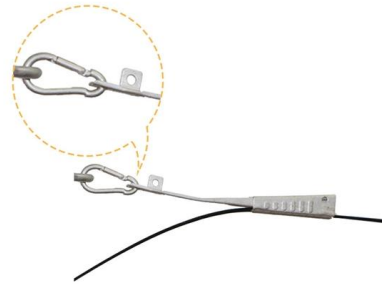
Tips for Debugging Optical Fiber Systems After Power Outages

Learn how to effectively debug optical fiber systems damaged by power outages or surges. Find out how to isolate, repair, test, and report the problem.



SEGGER J-Trace streaming trace probes

Equipped with full J-Link debug functionality, the J-Trace PRO is designed to support the advanced tracing features of all popular cores and architectures.



STM32H7x5/x7 dual-core microcontroller debugging

STM32H7x5/x7 dual-core microcontroller debugging The STM32H7x5/x7 dual-core microcontroller lines as described in Table 1. Applicable products (named STM32H7x5/x7 microcontrollers in this

Debug your app using Remote Console App Debugging

Debug your app using Remote Console App Debugging Here's how to debug your IoT Core console application remotely in Visual Studio: You will first need to set up the Remote Debugger on your



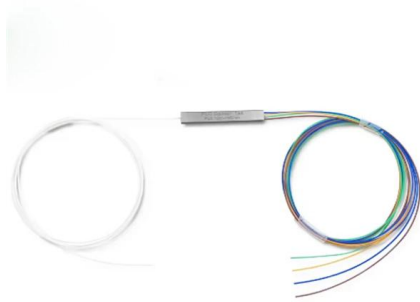
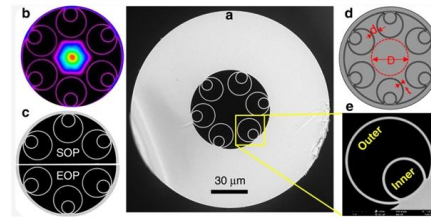
Remote Fiber Testing and Monitoring , EXFO

With EXFO's world-leading OTDR and iOLM technologies, you can qualify, certify, activate, troubleshoot and monitor any point-to-point (P2P) or point-to-multipoint



Link Diagnostic Per Port

The Diagnostic commands enables an insight into the physical layer components where the user is able to see information such as a cable status (plugged/unplugged) or if Auto-Negotiation has failed.



Attach to running processes with the Visual Studio debugger

Attach the Visual Studio debugger to a running process on a local or remote computer to debug running apps, apps not created in Visual Studio, and other scenarios.

Contact Us

For datasheets, pricing, or custom high-speed optical interconnect solutions, please visit:
<https://www.syropy.com.pl>