

Debugging PoE Switch SFP



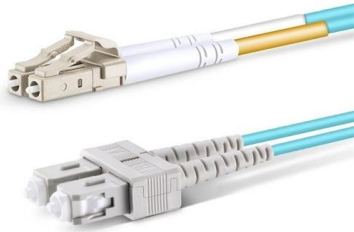


Overview

To enable debugging of the power controller and Power over Ethernet (PoE) system, use the `debug ilpower` command in privileged EXEC mode. `debug ilpower {cdp | event | ha | port | powerman | registries | scp | .}`. This article demonstrates how to check the operating status and internal information of optical modules on Fortinet switches. The Diagnostics and Tools pane reports the general health of the FortiSwitch unit, displays details about the FortiSwitch unit, and allows you to run diagnostic tests. An SFP PoE Switch is a combination of data networking and power delivery through Small Form-factor Pluggable (SFP) ports that allow devices to receive signals and power over a single fiber or copper connection. Hey, you might be able to see logs in `/var/log/messages` you can either SSH into the device or if you shift click the name of the device on the network page.



Debugging PoE Switch SFP

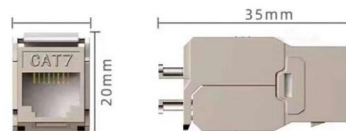


NETGEAR 52-Port PoE Gigabit Ethernet Smart Switch (GS752TP)

The NETGEAR GS752TP Smart Managed Pro Power over Ethernet (PoE) Switch is designed for desktop or rackmount and features 48-Ports of Gigabit Ethernet, 48 x PoE+ ports with a 380 watt

SFP port not working : r/Ubiquiti

Hi all I came home a few weeks ago and my wifi was disconnected and Internet was not working. I did some rudimentary troubleshooting, and it appeared that I had



LANCOM Systems

Hier sollte eine Beschreibung angezeigt werden, diese Seite lässt dies jedoch nicht zu.

How to Test an SFP Transceiver and Network Cable

Recently we have been getting questions about how to determine if an SFP (Small Form-factor Pluggable) transceiver is working. We refer to SFP generically here



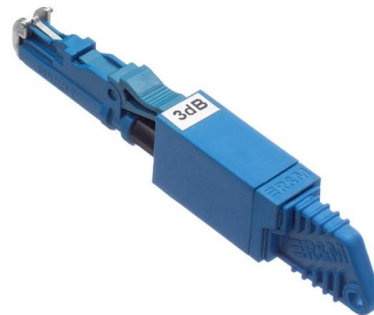
SFP port not working : r/Ubiquiti

I did some rudimentary troubleshooting, and it appeared that I had Internet to my console but I had lost connectivity between my UDM Pro and my switch. I tried



SFP Explained: What It Is and Why It Matters, Installation Guide

Discover what SFP is, explore its key benefits, and follow a step-by-step guide on installing SFP transceivers. Learn how to seamlessly connect two gigabit PoE switches using fiber optic or RJ45



Troubleshooting ports

Hey everyone, Hoping someone might be able to shed some light on a problem I'm having with my Alta Labs S24-POE Switch. Specifically, I'm having trouble getting SFP+ port 26 to work.



48-Port Gigabit PoE+ Smart Managed Pro Switch With 4 SFP Ports

48-Port Gigabit Ethernet PoE+ Smart Switch with 4 SFP Ports GS752TPv3 or GS752TPv3



How to Debug SFP Transceiver Incompatibility : r/networking

My question might be too general, but what are ways to debug/understand that an SFP+/QSFP transceiver is not compatible with a Switch's port? Im also struggling to find any

extreme isw 8gbp 4-sfp port debug related

iam using exterme switch and i want to debug my extreme isw 8gbp 4-sfp each and every port can you please support for that - 89207



Advanced Juniper PoE Debugging

So, let's find out some more about our PoE issue! The command that I'm going to be exploring is show poe. This is different from the one normally available in the CLI, and from what I've

How to use an SFP in Ubiquiti switches



SFP ports on Ubiquiti switches open up a lot of flexibility for connecting your network across long distances or upgrading to faster backhubs. Whether you're bridging buildings with fiber or just need



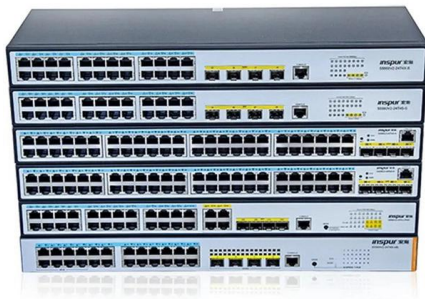
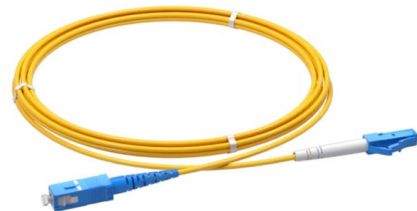
UniFi switch PoE not working: Diagnosing and fixing issues

Having trouble getting your UniFi switch to power devices? This post walks through why PoE might not be working and how to fix it. From port settings to firmware updates and power budgets, we cover



fortinet-cheat-sheet/cheat-sheets/Aruba-HP-switches

Show CPU stats of average load for 1 second, 5 seconds, and 1 minute, optionally setting period in seconds (300 is max). Show uptime of the switch since reboot,



How To View Port Status And Optical Module

This article demonstrates how to check the operating status and internal information of optical modules on Fortinet switches. We use a Moduletek SFP-GE-SX optical



SFP port blinks on and off

One of the SFP ports on a Cisco SG300-10PP 10-Port Gigabit PoE+ Managed Switch blinks on and off when plugged in. Any idea why ?



Command Reference, Cisco IOS XE Fuji 16.9.x (Catalyst 9200 Switches)

To enable debugging of a Power over Ethernet (PoE) port, use the debug platform poe command in privileged EXEC mode. To disable debugging, use the no form of this command.

Diagnostics and tools , FortiSwitch 7.6.3 , Fortinet Document Library

After you locate the FortiSwitch unit, select LED Blink > Stop. For the 5xx switches, LED Blink flashes only the SFP port LEDs, instead of all the port LEDs. Running cable diagnostics on a port that has



Why SFP PoE Switches Matter

Striking a balance between the convenience of PoE technologies and the needs of fast, long-distance connectivity often depends on knowledge and



An introduction to SFP ports on a Gigabit switch , TechTarget

An introduction to SFP ports on a Gigabit switch SFP ports enable Gigabit switches to connect to a variety of fiber and Ethernet cables and extend switching functionality throughout the



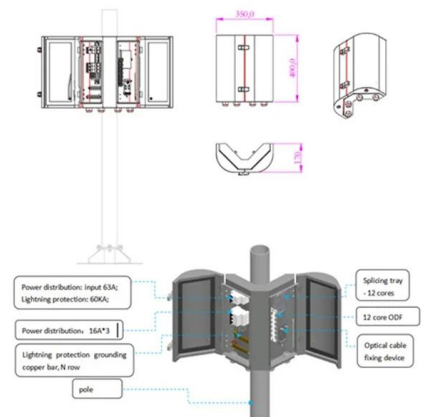
ie-1000 commands line

Start a conversation Cisco Community Technology and Support Networking Switching ie-1000 commands line - debug SFP - could not reach I2C Bookmark , Subscribe



Why SFP Ports Matters on PoE Switches?

In this deep-dive video, we unpack what SFP really is, how modules work, and why SFP ports aren't just optional, they're essential in building scalable, high-performance PoE networks.



SFP Troubleshooting Guide for Common Network Issues

SFP Troubleshooting Guide for Common Network Issues Introduction SFP modules sit at the core of modern fibre and copper networks--yet even the most reliable





Why SFP PoE Switches Matter

SFP PoE switches for efficient power and data delivery, compatibility insights, selection tips, and future trends to optimize network performance.



Contact Us

For datasheets, pricing, or custom high-speed optical interconnect solutions, please visit:
<https://www.syropy.com.pl>