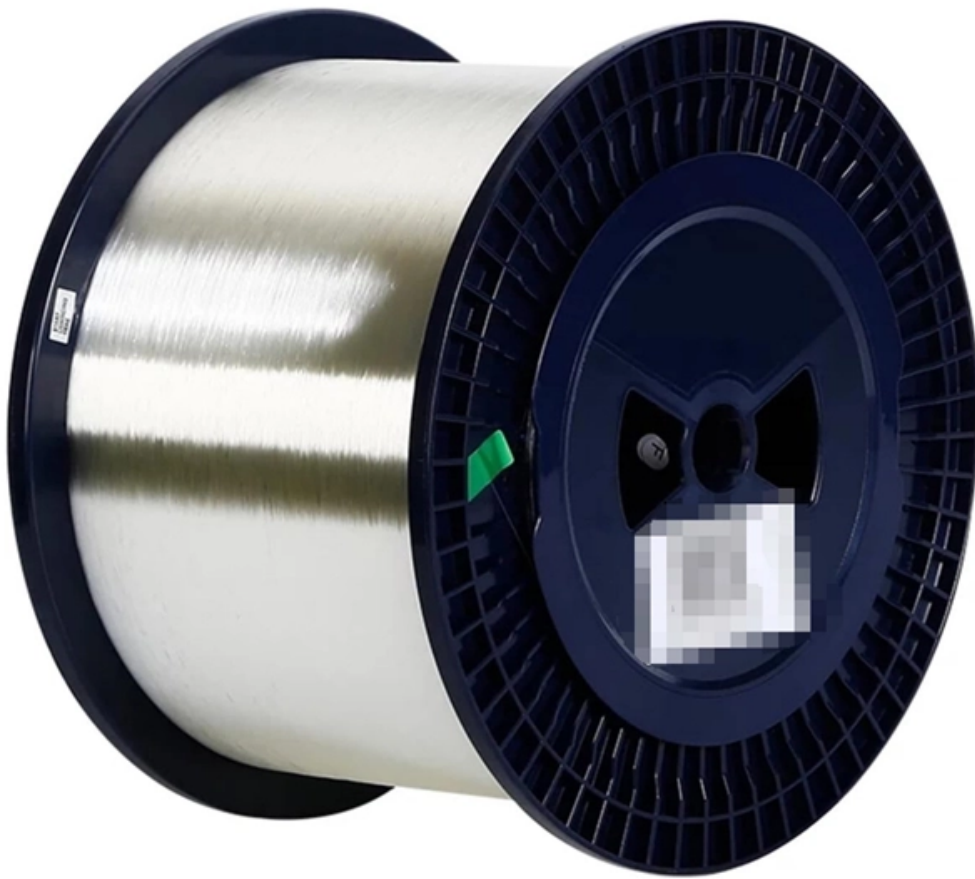


DDU Integrated Container Rack





DDU Integrated Container Rack

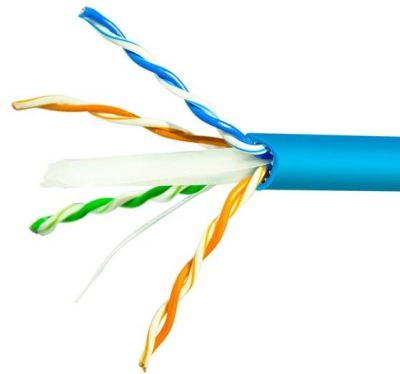


DDU overseas warehouse-Specializing in overseas warehouses and

Integrated supply chain solutions for standardized warehouse distribution and customized services for global e-commerce. DDU is located in southern California of the USA, which is close to the Ontario

Rack Power Distribution Unit Tutorial

Power Distribution Unit For Server Rack Tutorial
A rack mounted Power Distribution Unit (PDU) is a tool for selectively switching AC and/or DC power to your devices. This means that, with a rack power



Rakworx

Rakworx is a manufacturer of data center infrastructure. Integrated server cabinets, Power Distribution Units, All-In-One Cabinets and Modular Data Centers.

Integrated rack

A multi-rack configuration expands the data capacity of the single, base rack by adding more server enclosures, and scales efficiently by sharing networking and data management resources with the

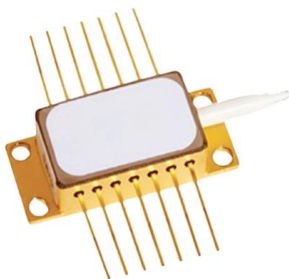


Huawei IDS1000 Container Data Center Solution

To solve the troubles, Huawei launched CloudPower IDS1000 container data center, which highly integrated power supply and distribution system, environmental monitoring, cooling systems, racks,

Rittal DataCube Container Datacenter

Rittal DataCube Container Datacenter Facts & market trends The Rittal datacenter container platform The modular principle for DC containers Standardized container solutions Innovation: Blue e+



Modular ULD Container Static Rack

Specifications: Cargo Capacity 10,000 Lbs. ULD Capacity: LD1, LD2, LD3. Dimensions: L 10'7" x W 5'5.75" x H 22.5" Deck height: 19.5" - 22" Weight: 850



Coolant distribution unit (CDU) , Eaton

In-rack coolant distribution units Optimized to efficiently and seamlessly integrate into a high-power device In-rack CDUs are optimized to efficiently and seamlessly integrate into a large, high-power



Containerized Data Center

Highly integrated. Highly reliable. Prefabricated, pretested, and fully configured architecture with high portability for edge computing application. All subsystems,

Racks & PDUs - SolveForce Unified Intelligence

D) Colo Cage Build-Out Cage walls/doors, seismic anchors, ladder tray integration, busway drops, RDHx option, DCIM integration; audit photos and circuit letters. -> /colocation E) Lab/Network Rack



Huawei IDS1000 Container Data Center Solution

Starting with Cloud Pak for Data System version 1.0.7.7, you can purchase a factory-built, integrated rack system that easily expands as well as streamlines the ordering process.

Container Racks



Container & Pallet Storage Racks Fixed KNOTT racks for ULD container and pallet storage are designed in a way to enable the satisfaction of your ideas. Their



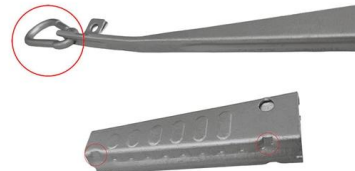
Smart Rack Solutions

Smart racks is an intelligent single rack solution designed for Data Centers and any type of IT applications where remote monitoring of the basic environmental



Data Center Container

Category Data Center Container Secure, plug-and-play capacity wherever you need IT
Description: Uniteam turn standard ISO shells into turnkey micro-data centers.



Network Cabinet & Rack

Rack Mount PDU: Power Distribution Solutions

Rack Power Distribution Units (rPDUs) are the last link in the power chain and ensure delivery of critical power to IT loads. The rPDU is designed to distribute



Rack Integration Services

Optimized rack-level solutions for your unique requirements. From design to deployment and support, our expertise and capabilities extend across all phases of data center rack integration.

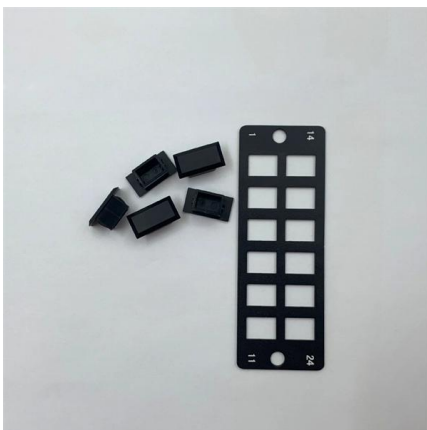


Pre-Integrated Rack PDUs

Pre-Integrated Rack PDUs Vertiv VR Racks Now Ship with Pre-Integrated Rack PDUs A worry-free time-saving solution for rapid deployment Checklist for your IT site a mile (or two) long? Let us cross

Maersk , Integrated Container Logistics & Supply Chain

Maersk is an integrated logistics company that offers supply chain solutions for managing shipments and cargo. Learn how to register, book and find prices.



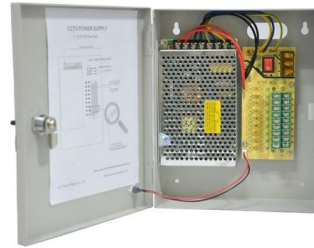
Rack Integration

Built and integrated to your specified requirements. We ensure that your racks are assembled, shipped and deployed on schedule. Thoroughly tested at each step and every level. Processes are ISO 9001



Rack PDU(s), Data Center Rack Mount PDU(s), Power Distribution

The Rack PDU For All Your Data Center Needs
Trusted by the world's largest data center operators, Server Technology Rack Power Distribution Units' innovative design combines over 30 years of



Intel® Rack Scale Design Architecture White Paper

Intel® Rack Scale Design Architecture Overview
As noted above, Intel RSD is a disaggregated architecture, meaning that various data center hardware resources, such as compute modules, non

Rack and Roll: Explaining the Surging Demand for Integrated Racks

Deploying integrated racks accelerates the process in several ways. The system integrator building the integrated rack typically has ready access to all of the equipment - from rack to server to cables -



Server, Network, & Data Center Racks, Cabinets,

Browse server, network, & data center racks, cabinets, shelves, & cable managers from a premier manufacturer of high-quality, scalable IT solutions.



Eaton SmartRack Modular Data Centers

Designed to meet IP54 standards, the IT rack and cooling enclosures protect equipment from dust and splashing/dripping water as well as physical and environmental conditions found in factories,



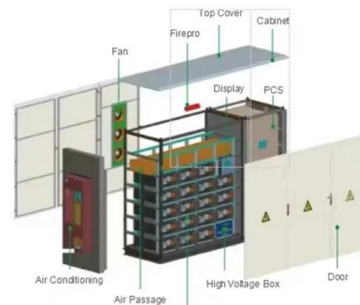
containerbroschuere_en dd

There are no limits to the construction of individual data centre containers, from small main data centres, to Edge and Fog installations, through to large modular cloud data centres.



What's a flat rack container? Your guide to dimensions & uses [+find

Table of Contents A flat rack container is used to ship uniquely shaped or oversized goods that can't fit inside a standard container. Read this blog to find out all about flat rack container



Explaining the Surging Demand for Integrated Racks

This paper looks at the most popular emerging colocation strategy - building integrated racks offsite and shipping fully assembled, integrated racks to the data center - and explains the benefits of such an





InfraSuite Modular Server Rack System

By opting for a Delta modular rack cabinet, data centers choose the ultimate combination of convenience, flexibility, and safety. Delta manufactures a 42U



Contact Us

For datasheets, pricing, or custom high-speed optical interconnect solutions, please visit:
<https://www.syropy.com.pl>