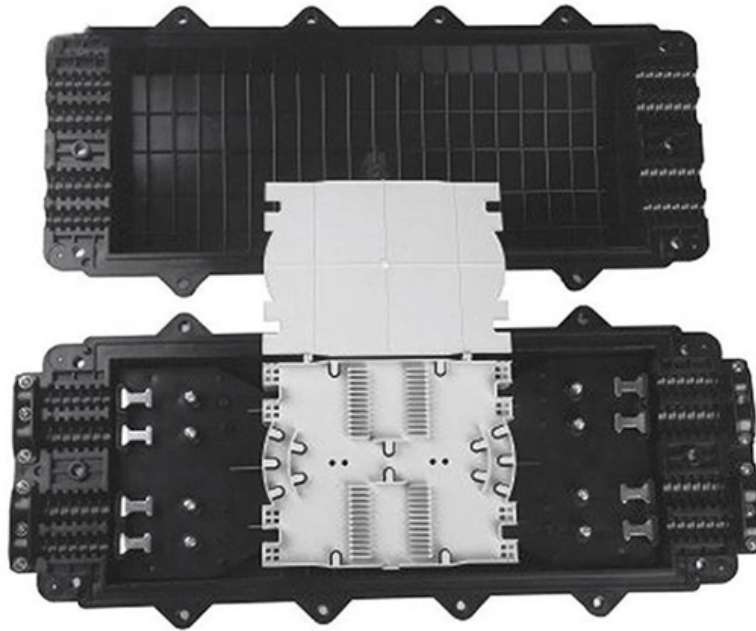


DCS Aggregation Switch





Overview

The Arista DCS-7124SX-R is a high-density 10 Gigabit Ethernet switch engineered for enterprise networking environments, virtualization infrastructures, aggregation layers, and high-performance data center deployments. The Arista 7010X Series, including the 7010TX-48, 7010TX-48C, 7010TX-48-DC and 7010TX-48C-DC, offers a purpose built high performance and power efficient solution for high density data center deployments in a compact system. This video is ideal for cloud administrators and IT professionals who want to optimize VM n.



DCS Aggregation Switch



Designing Datacenter Overview

Overview of DC design Core layer : high speed packet switching for flow going in and out of the DC Aggregation layer: Service and module integration, layer 2 domain

7010X Series Data Center Switches

Overview The Arista 7010X Series, including the 7010TX-48, 7010TX-48C, 7010TX-48-DC and 7010TX-48C-DC, offers a purpose built high performance and power efficient solution for high density data



U S W

RPS DC input is a new feature on USW-Aggregation-Pro, this DC input provides redundant power when the switch is connected to USP-RPS (UniFi Smart Power RPS) via RPS DC input. When the switch's

Amazon : UBIQUITI UniF Aggregation Switch Pro, 28-Port 10G

Product Description UniFi Pro Aggregation Switch
The Switch Pro Aggregation is a fully managed, Layer 3 switch with (28) 10G SFP+ ports and (4) 25G SFP28 ports designed to enhance your network's



Aggregation Switch

An aggregation switch refers to a type of switch used to connect multiple ToR switches to a core switch/router in a cloud data center network. It enables high-bandwidth aggregation ports to be



Edgecore DCS201 (AS5835-54X) , 10G Switch

Description Edgecore DCS201 is a high-performance 10G SFP+ switch designed for data center and cloud environments that require dense high-speed connectivity,



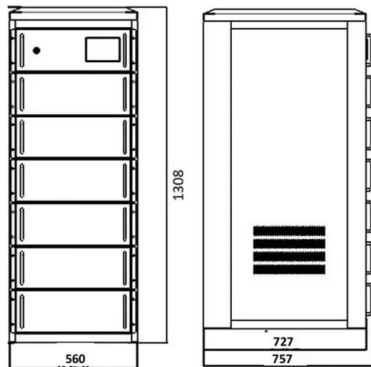
Arista DCS-7124SX-R 24 Ports 10GbE Ethernet SFP+ Refurbished

Arista DCS-7124SX-R 24-Port 10GbE SFP+ Switch
The Arista DCS-7124SX-R is a high-density 10 Gigabit Ethernet switch engineered for enterprise networking environments, virtualization



In-depth analysis: What is an aggregation switch?

In many network constructions, we have all heard of switches. So do you really understand switches? Why are aggregation switches often overlooked?

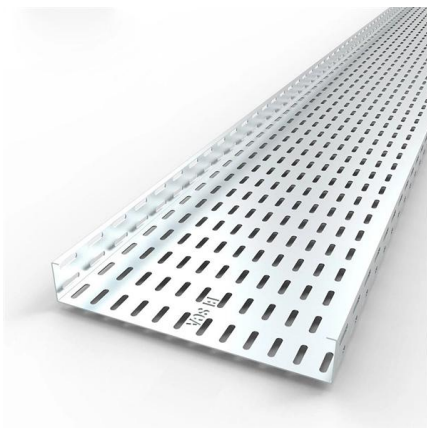


7020R Series Data Center Switches

The Arista 7020R series delivers line rate switching at layer 2 and layer 3 to enable dramatically faster and simpler network designs for data centers that lowers the network capital and operational expenses.

Tap Aggregation PTP Sync & Transparent Clock (TC) PTP Multicast

Description This article covers the configuration required to run the PTP TC with multicast transport environment, and Tap Aggregation DUT time sync with PTP GM. Platform Compatibility



7124SX_Data Sheet 11_14_13

Arista EOS All Arista products including the 7124SX switch run Arista EOS software. The same binary image supports all Arista products, making it easy for network administrators to standardize the



Edgecore DCS500 (AS7816-64X) , 100G Switch

Edgecore DCS500 is a high-density 100G QSFP28 switch designed for data center and cloud environments that require ultra-high throughput, scalable fabric



DCS AH-64D Apache: Pilot/CPG Cockpits and Controls

In this chapter of the DCS AH-64D Apache guide, we describe the location of the instruments in the cockpit and explain what the buttons on the



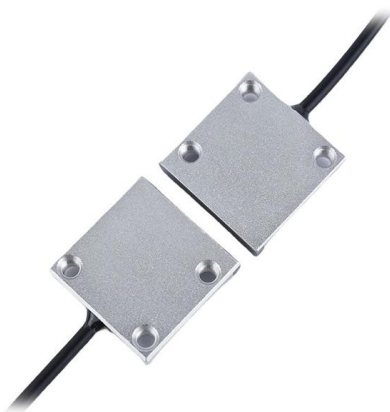
Arista 7020r Series Data Center Switches Data Sheet

Overview The Arista 7020R Series, including the 7020SR, 7020SRG, 7020TR and 7020TRA, offers a purpose built high performance and power efficient solution for high density data center deployments.



Huawei DCS - Network Virtualization, DVS, Aggregation & Portgroups

Learn the fundamentals of network virtualization in Huawei DCS, including Distributed Virtual Switch (DVS), network aggregation, and portgroups, with this step-by-step tutorial.





Data Center Multi-Tier Model Design

Data Center Core Layer The data center core layer provides a fabric for high-speed packet switching between multiple aggregation modules. This layer serves as the gateway to the campus core where

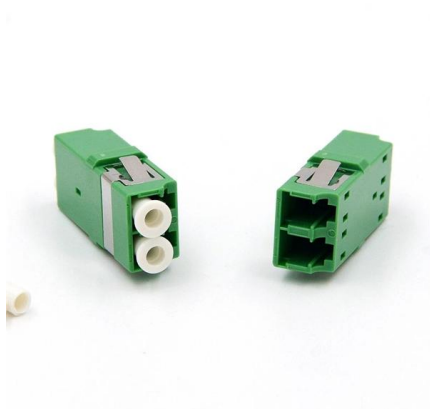


Data Center Design: Basic 3 Layers, Core, Aggregation,

Data Center Basic Layered Design of Core, Aggregation, and Access The data center network design is based on a proven layered approach, which

7150 Series 1/10 GbE SFP Ultra Low Latency Switch

Designed to suit the requirements of demanding environments such as ultra low latency financial ECNs, HPC clusters and cloud data centers, the class-leading deterministic latency from 350ns is coupled



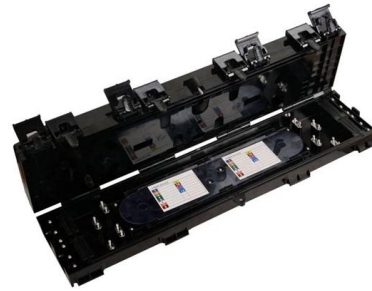
Data Center Switch

The Edgecore DCS series offers data center connectivity solutions with the SONiC operating system, targeting spine, leaf, and ToR requirements. The Edgecore



7020R4 Series Data Center Switch Router

DANZ provides a solution to monitoring and visibility challenges at 100G, giving IT operations the ability to proactively deliver feedback on congestion events, filter, replicate, aggregate and capture traffic

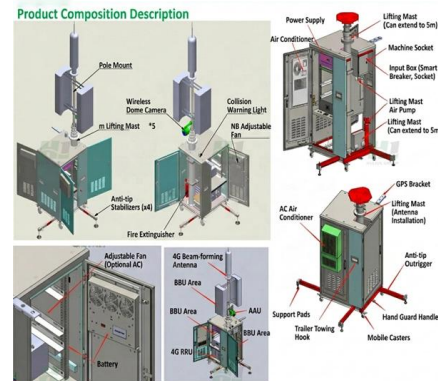


Switching & Protection solutions for DC Combiners in Battery Systems

Are you searching for Switching and Protection solutions to protect and secure DC combiners and keep them running in Commercial & Industrial Battery Energy Storage System (BESS)? Easily find the

Arista Arista DCS-7150S-64-CL-F

With deterministic latency from just 350ns, it is purpose-built for high-frequency trading, HPC clusters, and modern cloud-native data centers. The DCS-7150S-64-CL-F features 48 x 1/10GbE SFP+ ports,



What is an Aggregation Switch?

The aggregation switch is located in the middle of the network architecture, which is equivalent to a middle-level manager of a company. It



Carrier Aggregation and Dual Connectivity

Carrier Aggregation Carrier aggregation (CA) allows combining of multiple component carriers Increasing bandwidth and enhancing data rates for users. Support for non-contiguous CA to more



Basics for the A10c II

Some parts in the controls got censored by Steam because its a 1870s insult for unskilled asian workers. <3<3<3<3<3<3 means C- o- o- l- i- e (as in <3<3<3<3<3<3

Data Center Aggregation Layer Design and

Nexus 7000 Series Switch at the aggregation layer and a Cisco Nexus 5000 Series Switch at the access layer. The content of this chapter focuses on the



7010X Series Data Center Switches

The Arista 7010X switches offer low latency under 3 microseconds and a packet buffer of 4MB that is fully shared and allocated dynamically to ports that are congested.



The Edgecore DCS201 switch meets the high-performance, availability, and network-scaling requirements of enterprise and cloud data centers. The DCS201 provides



7020R Series Data Center Switches

Overview The Arista 7020R Series, including the 7020SR, 7020SRG, 7020TR and 7020TRA, offers a purpose built high performance and power efficient solution for high density data center deployments.

Data Center Switch

DCS Series Data Center Switch Overview
Edgecore offers high-performance, bare-metal data center switches for top-of-rack and spine network deployment,



Contact Us

For datasheets, pricing, or custom high-speed optical interconnect solutions, please visit:
<https://www.syropy.com.pl>