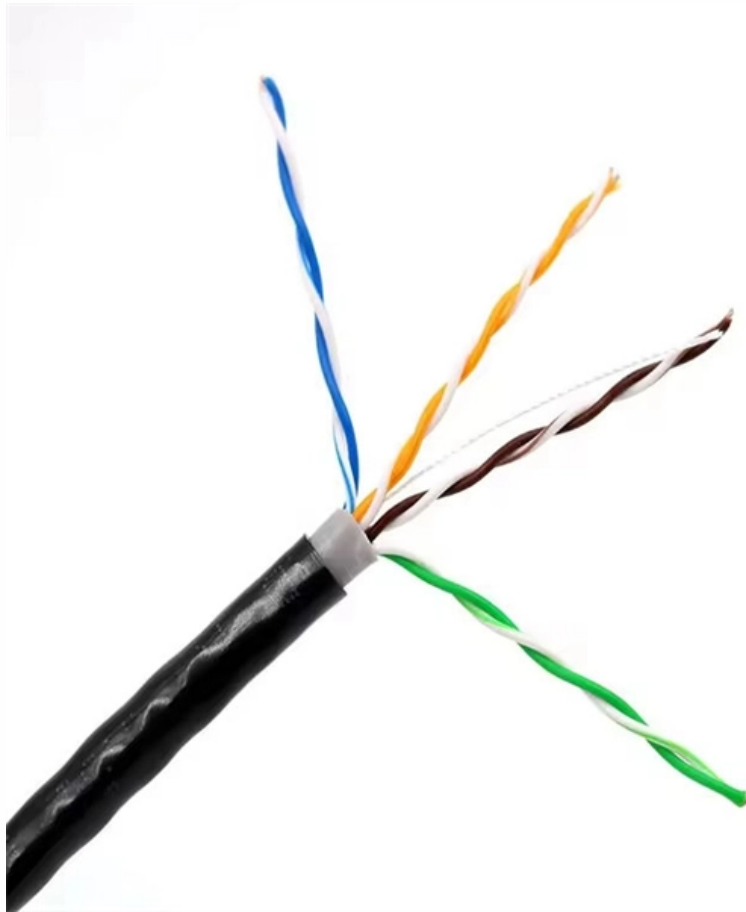


Customs Declaration for Independent Switches EML





Customs Declaration for Independent Switches EML



Making a full export declaration

Find out what you need to do when making a full declaration to send goods from the UK.

4 on European Union's Import Control System 2 (ICS2)

uction Journey. Dear valued customer, CMA CGM will officially go live with ICS2 on November 13th, 2024. For detailed information on the compliance requirements for ICS2, especially the additi. nal



Customs regulations: export and customs information , Support » DPD

We support you in compliance with all important customs regulations so that your international shipping is trouble-free.



Customs online

Lodging the entry summary declaration and notification of arrival Basic information Before the goods are brought into the customs territory of the Union, the entry summary declaration shall be lodged at the



123 Customs Forms and Online Shipping Labels , Postal Explorer

123.32 Required Electronic Transmission of Customs Declaration Information For an item bearing a privately printed customs form under 123.31, a mailer must electronically transmit customs



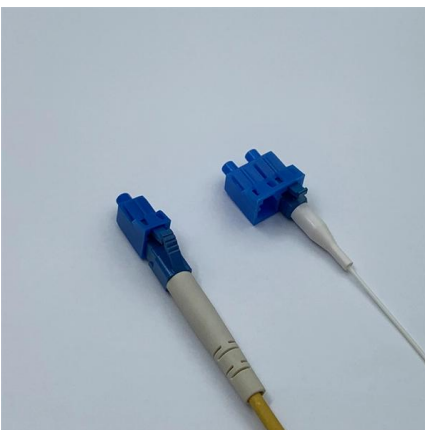
What documents do I need for international shipping?

When shipping internationally, you may be required to provide certain documents to clear your goods through customs. For small businesses and start



Amend or cancel a Customs Declaration Service import declaration

Check if you can amend or cancel your import declaration, what to do if you get an error message and what happens if your declaration has already cleared.





Customs online

The customs declaration type APK (declarations of postal and courier consignments with a value of up to 150 euros) is available for ATLAS users. For private individuals and companies that cannot or do not



Customs Declaration Service

About the Customs Declaration Service The Customs Declaration Service supports making import and export declarations when moving goods into and out of the UK.

EU Customs ICS2 Manifest Declaration User Guide (2.0)

To ensure compliance with this new regulation, along with existing customs declaration requirements and our operational procedures, please follow the guidelines below:



Customs clearance documents and procedures , Access2Markets

It provides detailed information on EU import procedures, including topics such as registering as an economic operator and the Economic Operators Registration and Identification (EORI) number, the



Step 1 - Export declaration The AES module can be found within the customs module. To proceed, select type: E, and then choose the system AES - Standard.

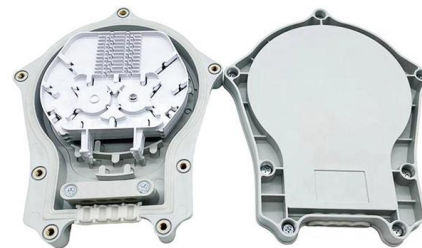


Navigating Customs Declaration Forms for Shipping into

Learn when to use a customs declaration form for shipping to Europe from the USA and how to correctly complete CN22 and CN23 international

Please note: Important instructions for information classification

This category includes any goods, components and materials being mis declared, or transported under suspicious circumstances, or that could be used for illicit purposes, for example related to terrorist or



Customs information for sending parcels internationally , DHL

For shipments to countries outside the EU, always attach carefully completed customs declarations (CN23 or CN22) to the item. The required number of customs declarations depends on the country.





Customs Formalities on Entry and Import into the European

Following the deployment of ICS 2.0 but before 31 December 2020 risk analysis for goods in postal consignment that exceed 250g shall be carried out at their presentation on the basis, where



CE Mark Guide for Electronic Hardware Products

3rd party vs. in-house testing Applying the CE mark label Declaration of conformity The CE Mark Process for Electronic Hardware Manufacturers What

E-Commerce Guidelines: Customs in Germany and the EU

If your subsidiary is involved in the respective commercial operations, it acts as importer into the EU and the import is possible with one customs declaration - regardless of the number of end customers per



FSB , Customs declarations for international trade

Customs clearance is the process that goods must go through before being imported or exported. It's important that your customs declaration is accurate, or this can cause delays crossing the border.



How to read a Chinese customs declaration , Guides

It is important to immediately note a key distinction: Chinese customs declarations can be either preliminary or regular. A preliminary declaration is a completed



Customs Formalities on Entry and Import into the European

PART A INTRODUCTION The Union Customs Code (UCC) entered into force 30 October 2013 and is applicable since 1 May 2016. It will be implemented in stages from that date until 31 December 2025

Customs online

The movement of goods through Germany is free except for very few restrictions. In order to move excise goods and to take part in the electronic procedure you must have been registered in due time.



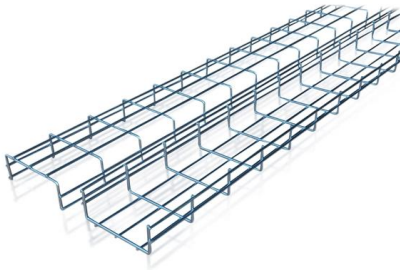
Internet-Zollanmeldung Einfuhr Internet customs declaration import

You may always authorize a customs agency or a freight forwarder to make the customs declaration. Please consider that you must complete the form in German. To start the application, please click on



Streamline Your Electronic Component Distribution with

Classification of Electronic Components When it comes to customs clearance for electronic component distribution, it is important to understand the

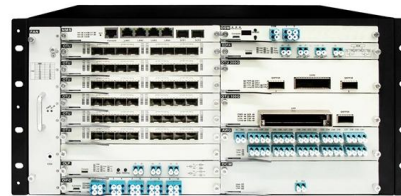


Making an exit summary declaration for exports from Great Britain and

If you're moving goods outside the UK, you'll need to make an exit summary declaration if you've not fulfilled safety and security requirements with a full customs export declaration.

Internet-Zollanmeldung Einfuhr Internet customs declaration import

Internet-Zollanmeldung Einfuhr Internet customs declaration import - translation aid Note: This is only a translation aid. Please understand that not everything is translated or explained. You may always



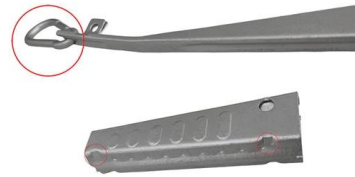
Export Note: Juniper Trade Compliance Procedures for Customers

If Juniper elects at its discretion to provide such documentation, then Distributor shall be responsible for timely providing Juniper with all information necessary to include proper customs valuations in its



Customs online

An electronic customs declaration (ATLAS) or an electronically transmitted customs declaration (internet import declaration, German: Internet-Zollanmeldung- Einfuhr - IZA) is always required for



Contact Us

For datasheets, pricing, or custom high-speed optical interconnect solutions, please visit:
<https://www.syropy.com.pl>