

Customs Declaration EDFA40G





Customs Declaration EDFA40G

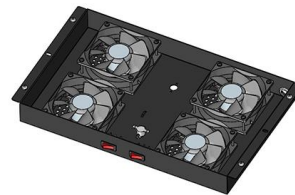


Customs regulations: export and customs information , Support » DPD

We support you in compliance with all important customs regulations so that your international shipping is trouble-free.

Bringing goods into the UK for personal use: Declare goods and pay

Bringing in goods for personal use when you travel to the UK from abroad - types of tax and duty, duty free, EU and non-EU arrivals, banned and restricted goods.



Amend or cancel a Customs Declaration Service import declaration

Check if you can amend or cancel your import declaration, what to do if you get an error message and what happens if your declaration has already cleared.

Customs online

In addition to the basic information, here you find a summary of the most frequently asked questions about the entry summary declaration.



Check if you need to declare goods you bring into or take out of the UK

Whether you need to declare goods to UK customs depends where in the UK they start or end their journey. This service is also available in Welsh (Cymraeg).



Upload documents and get messages for the Customs Declaration

What you need to do if you've submitted a declaration using the Customs Declaration Service and need to send supporting documents or respond to HMRC queries.



Submit application for authorisation to lodge simplified customs

As a holder of an authorisation to lodge simplified customs declarations for the export of goods, you may also place the goods under the export procedure outside the opening hours of the





UK Customs Declaration Form: A Complete Guide

Master the UK customs declaration form with this step-by-step guide. Learn what to declare, how to fill it out, and navigate post-Brexit travel rules.

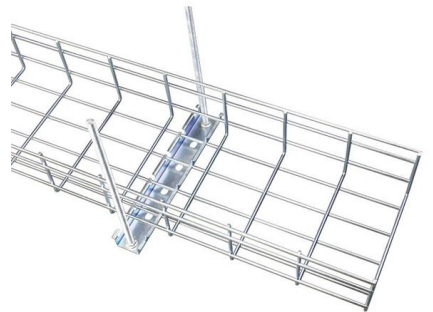


Customs clearance documents and procedures , Access2Markets

To make an import declaration you need to choose how to pay duties, VAT or excise. The Customs Declaration Service allows you to manage your customs financial accounts and download

Customs Procedures for import and export

The following pages contain information on EU customs procedures for importing and exporting goods.



Customs declaration when importing & exporting from

Expedite customs declaration and clearance as your business goes global with these customs support services from DHL Express Australia. Learn



DHL Zollinhalteerklärung CN22

Der Absender bestätigt, dass die Daten in der vorliegenden Zollinhalteerklärung korrekt sind und die Sendung keine gefährlichen, gesetzlich oder aufgrund postalischer oder zollrechtlicher Regelung



Customs Declaration Service: Goods Identifications

The current Customs Handling of Import and Export Freight (CHIEF) system is ending. CHIEF import declarations will close after 30th September 2022. CHIEF

Trade Tariff: look up commodity codes, duty and VAT rates

find out about suspensions or reductions You'll need a commodity code when you fill in a customs declaration form, so you pay the correct amount of tax and duties.



Navigating Customs: A Detailed Guide to Export/Import

Navigate through the complexities of customs with our detailed guide on export/import declaration forms, essential for international traders.



Simplified Customs Declaration Process

Information about transit movements and Temporary Storage (TS) with Simplified Customs Declaration Process (SCDP).



Customs online

You may send the declaration form and the printouts of the requested documents to the customs office. The storage period for letters and for parcels is 9 days from the date of delivery of the mail by

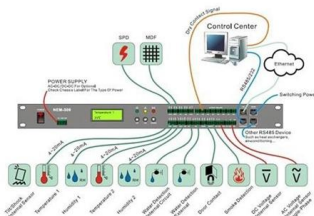
Customs online

The Customs Portal is the central platform for companies that want to manage their customs-related processes efficiently and paperlessly. From the customs declaration of goods to the processing of



Customs online

There are many occasions in which you may need information from customs. Perhaps when you are travelling, when you are at school or university abroad,



How to fill out a customs form for



international shipping

Completing your customs declaration form You must complete a customs declaration form when shipping abroad. This will include: A description of the goods you're sending (see providing a clear

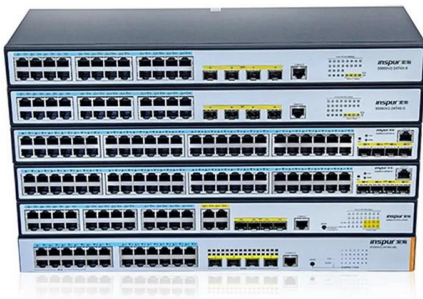


Customs declaration

Once you've successfully received your customs declaration, you are entitled to transfer your goods through a customs procedure. Customs declarations are

Customs online

An electronic customs declaration (ATLAS) or an electronically transmitted customs declaration (internet import declaration, German: Internet-Zollanmeldung- Einfuhr - IZA) is always required for



Customs information for sending parcels internationally , DHL

When sending international items with DHL (DHL Paket International, DHL Päckchen International, DHL Europaket) to countries within the European Union (EU), a customs declaration is not required.



Contact Us

For datasheets, pricing, or custom high-speed optical interconnect solutions,
please visit:

<https://www.syropy.com.pl>