

# **Customization Process for Anti-tracking Relay Protection Coarse Wavelength Division Multiplexers**





## Customization Process for Anti-tracking Relay Protection Coarse W

Ordering information

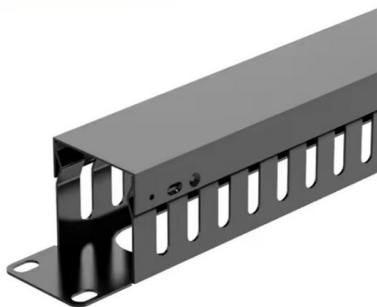
NO.	1	2	3	4	5	6
Model	SP2M1	SP2M2	SP2M3	SP2M4	SP2M5	SP2M6
Product name	Patch Panel	Patch Panel	Patch Panel	Patch Panel	Patch Panel	Patch Panel
Illustration						
NO.	1	2	4	1	2	4
Maximum number of cores	144	288	576	144	288	576
Product size (including mounting brackets and adapters)	482.8*202*74 mm	482.8*202*78.1 mm	482.8*202*77 mm	482.8*202*74 mm	482.8*202*78.1 mm	482.8*202*77 mm
Standard color code	RAL9005	RAL9005	RAL9005	RAL9005	RAL9005	RAL9005
Inventory	2	2	2	2	2	2

### COARSE WAVE DIVISION MULTIPLEXING (CWDM)

Coarse Wavelength Division Multiplexing (CWDM) is a technology that combines multiple optical signals on a single fiber optic cable. CWDM utilizes specially designed lasers that transmit light at different

### WDM and DWDM Multiplexing

To be successful the approach used must reduce unwanted component levels to at least 30 dB below a wanted channel. As before for the three channels, and calculate all the possible combinations



### Hybrid silica coarse wavelength-division multiplexer transmitter

We have developed a cost-effective and highly compact 100-Gb/s coarse wavelength division multiplexing (CWDM) transmitter optical subassembly (TOSA) using lens-free hybrid

### Coarse Wavelength Division Multiplexing

Corning coarse wavelength division multiplexing (CWDM) solutions utilize advanced thin-film-filter technology. CWDM solutions are available in industry-standard 20 nm spacing with options for a



### Wavelength division multiplexing

This section contains examples of wavelength division multiplexing (WDM) circuits. Wavelength division multiplexing is a method of modulating multiple signals at



### Coarse Wavelength Division Multiplexers (CWDM Series )

The Coarse Wavelength Division Multiplexer series is designed and manufactured to Telcordia standard. The devices use environmentally stable thin film filter and advanced packaging technology to achieve



### What is CWDM (Coarse Wavelength Division

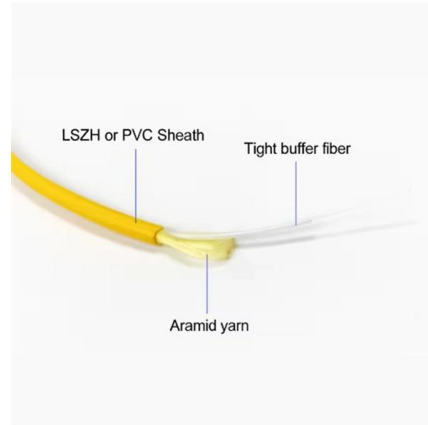
Share this Coarse Wavelength Division Multiplexing (CWDM) is an optical networking technology that increases the bandwidth of existing networks.





### Measured wavelength tuning and tracking

We measured the wavelength tracking characteristic with the directly modulated distributed-feedback laser at 2.5 Gb/s. We use temperature tuning for this



### Compact and monolithic coarse wavelength-division multiplexer

We studied the imaging performance of a chirped grating for a demultiplexer designed for coarse wavelength division multiplexing using a wavefront aberration analysis and the ray tracing



### Coarse wavelength division (de)multiplexer using an interleaved

We have demonstrated a coarse wavelength (de)multiplexing structure on the silicon-on-insulator platform. It comprises two 4-channel angled multimode interferometers interleaved with an



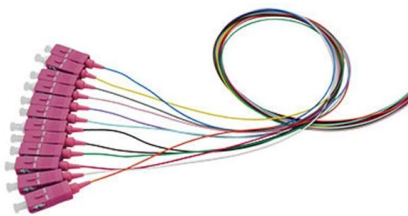
### SpectraMux® CWDM , OEM Optical Communication Solutions , Corning

SpectraMux® CWDM Corning's coarse wavelength division multiplexers (CWDMs) are integrated optical modules that mux or demux multiple optical signals of different wavelengths in a single fiber. Our



### Coarse wavelength division multiplexer on silicon-on-insulator for 100

A four-channel cascaded MZI based de-multiplexer at O-band with coarse channel spacing of 20 nm and band flatness of 13 nm is demonstrated on silicon-on-insulator. The device shows a mean crosstalk



### Frequency Tracking Fundamentals, Challenges, and Solutions

Understand how key settings, such as phase rotation, nominal voltage, and alternate frequency source selection logic, affect relay frequency tracking performance.

### Understanding CWDM: Coarse Wavelength Division

Explore CWDM (Coarse Wavelength Division Multiplexing) and its significance in optical networks. Learn how CWDM differs from DWDM and its



### (PDF) Coarse Wavelength Division Multiplexer on

A four-channel cascaded MZI based de-multiplexer at O-band with coarse channel spacing of 20 nm and band flatness of 13 nm is demonstrated on



## SpectraMux® CWDM , OEM Optical Communication Solutions , Corning

Our CWDM products directly address the competitive market needs for metropolitan and access wavelength management. Custom channel plans are available upon request.



### COARSE WAVE DIVISION MULTIPLEXING (CWDM)

As long as transmitter and receiver products are available to convert specific electrical signals to an optical CWDM wavelength, they can share the same CWDM multiplexer and demultiplexer, and thus

### On-Chip Coarse Wavelength Division Multiplexers Based on Silicon

An ultra-compact 4-channel coarse wavelength division multiplexer with silicon gratings is proposed. The designed compact device has the flat-top passbands of more than 11nm, insertion loss of less than



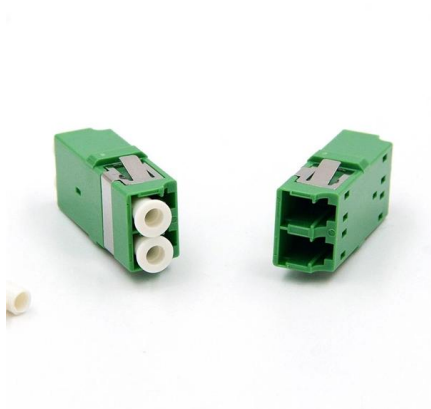
### Defining Coarse Wavelength Division Multiplexing

Coarse Wavelength Division Multiplexing (CWDM) enables simultaneous transmission of multiple data signals over a single optical fiber up to medium



## Introduction to CWDM Technology

CWDM (Coarse Wavelength Division Multiplexing) is a technology which multiplexes multiple optical signals on one fiber optic strand by making use

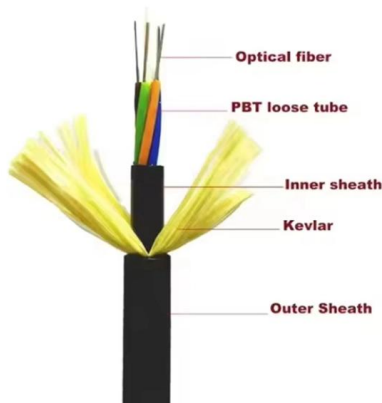


## High-Performance Wavelength Division Multiplexers Enabled by Co

Here, we develop a novel design approach that co-optimizes inverse-designed wavelength division multiplexers and distributed Bragg gratings to achieve ultra-low crosstalk without compromising

## On-Chip Coarse Wavelength Division Multiplexers Based on Silicon

A four-channel cascaded MZI based de-multiplexer at O-band with coarse channel spacing of 20 nm and band flatness of 13 nm is demonstrated on silicon-on-insulator.



## Design and fabrication optimization of a 4-channel polarization

In this work, a 4-channel polarization-independent arrayed waveguide grating (AWG) was designed for CWDM systems, which was realized by ridge waveguides on the SOI platform with 3

## QuickSpecs HP Coarse Wave Division



## Multiplexer Family Overview

Key Features The HP Coarse Wave-Division Multiplexing (CWDM) solution is an integrated optional component of the Cisco MDS 9000 family switch extended distance solutions. Provides direct

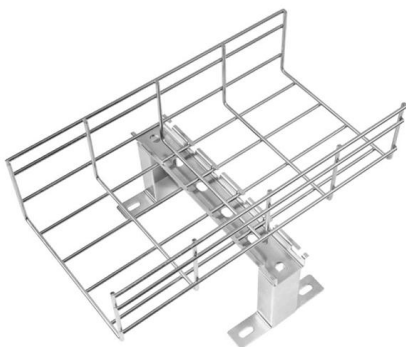


### Silicon-based multi-channel wavelength-division multiplexers for

A compact silicon-based four-port coarse wavelength-division multiplexer (CWDM) with a footprint of  $200 \times 200 \mu\text{m}^2$  and an insertion loss of  $\sim 2\text{dB}$  is demonstrated. This configuration can support each

### On-Chip Multichannel Dispersion Compensation and

In this work, a method for on-chip multichannel dispersion compensation with simultaneous wavelength division multiplexing and



### High-Performance Wavelength Division Multiplexers Enabled by Co

Abstract Wavelength division multiplexers are fundamental to the functioning and performance of integrated photonic circuits, with applications ranging from optical interconnects to sensing and



## Coarse Wavelength Division Multiplexer on Silicon-On-Insulator for

The de-mux is divided into two stages, and each stage consists of two cascaded MZI blocks. The first block is de-signed as an interleaver, and splits the odd and even wavelength channels. The two



## Contact Us

---

For datasheets, pricing, or custom high-speed optical interconnect solutions, please visit:  
<https://www.syropy.com.pl>