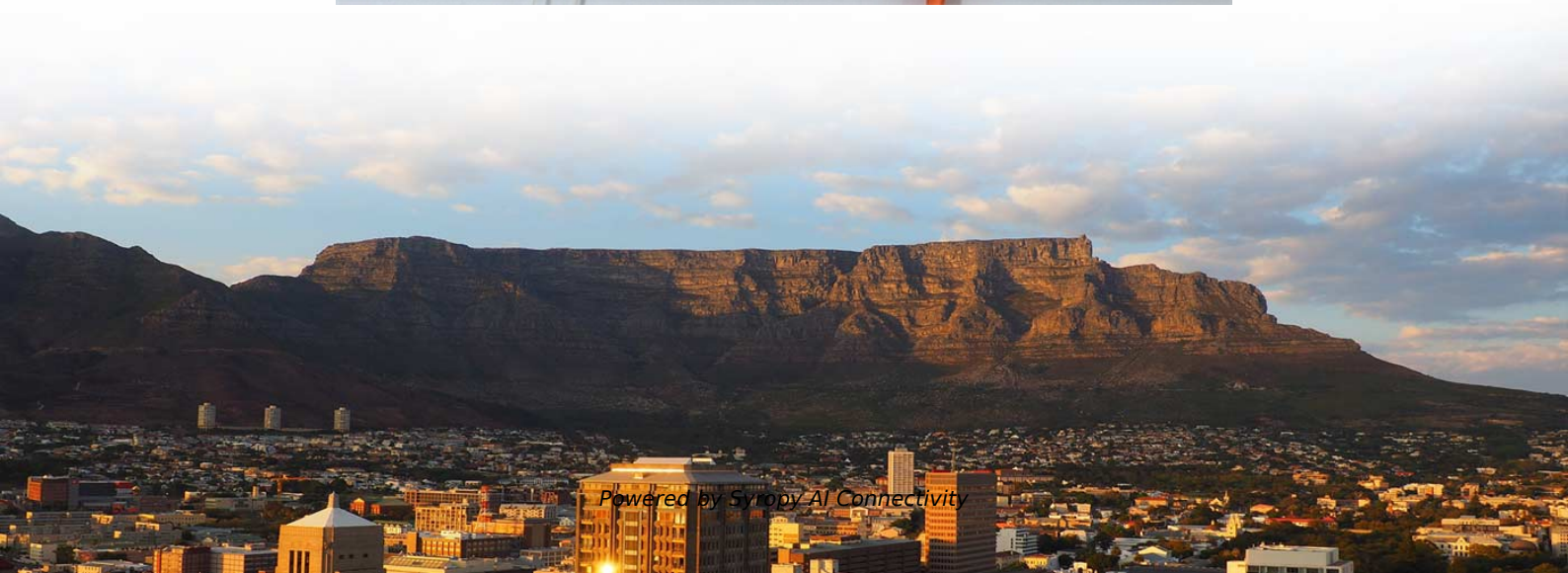


Current in mains power distribution box





Overview

Below the main breaker are the two bus bars carrying the current between the main breaker and the two columns of branch circuit breakers, with each respective circuit's red and black hot wires leading off. OverviewA distribution board (also known as panelboard, circuit breaker panel, breaker panel, electric panel, fuse box or DB box) is a component of an that divides an electrical power feed into subsidiary. This picture shows the interior of a typical distribution panel in the United Kingdom.



Current in mains power distribution box



A Complete Guide to Distribution Boards

Read this comprehensive buyer's guide on distribution boards, explaining what they are, their uses, types, how to connect distribution boards,

Distribution board

A distribution board (also known as panelboard, circuit breaker panel, breaker panel, circuit breaker, electric panel, fuse box or DB box) is a component of an electricity supply system that divides an



A Complete Guide to Distribution Boards

Distribution boards might also be called panelboards, breaker panels, or simply electrical panels. A distribution board or breaker panel separates



Power Distribution Boxes Explained Simply

A power distribution box is a key part of any electrical system. It takes electricity from the main source and safely sends it to different circuits in a home,



Mains Electric Box: What Is It and What Does It Do?

The mains electric box works by receiving the main electrical supply from the grid and distributing it throughout the building in a safe and controlled

Distribution Box Guide: Types, Components & Solutions

Understand distribution boxes (DB boxes) in 5 minutes. Learn about types, components, functions, and uses. Find the perfect DB box for your needs.



The Ultimate Guide to Distribution Box Types

Discover the key types of distribution boxes with NUOMAK's comprehensive guide. Learn about Main Distribution Boards (MDB), Consumer Units, Transfer



Distribution Boards

Distribution boards, often referred to as electrical panels or breaker boxes, serve as the nerve center of any electrical system. Here we explore the crucial parts of a distribution board and gain insights into



Explore Power Distribution Box Types and Functions

Power distribution boxes are used in commercial and residential buildings and are part of the electrical system, also known as switchboards.

Understanding Distribution Boxes: Your Guide to Power

What is the function of a Distribution Box? A distribution box can also be called a distribution board or a distribution panel. It serves as the main incoming



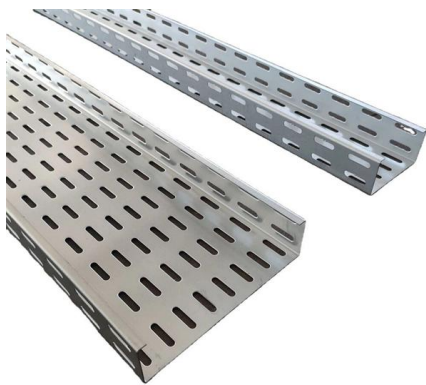
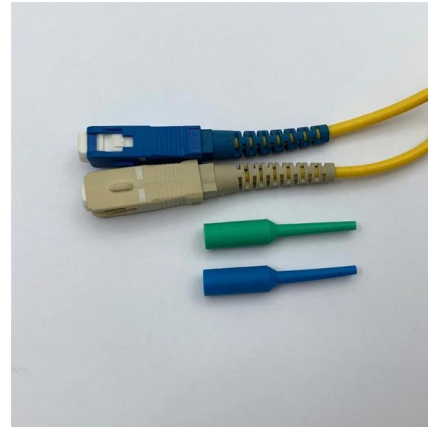
Mains Electric Box: What is it and what does it do?

The mains electric box is a square or rectangular box made from plastic or metal that is installed somewhere in our homes. The incoming live electricity feed enters the



Mains Electric Box: What Is It and What Does It Do?

Electricity is an essential part of our daily lives. It powers our homes, our businesses, and our technology, and we rely on it for almost everything we



Power Distribution Systems

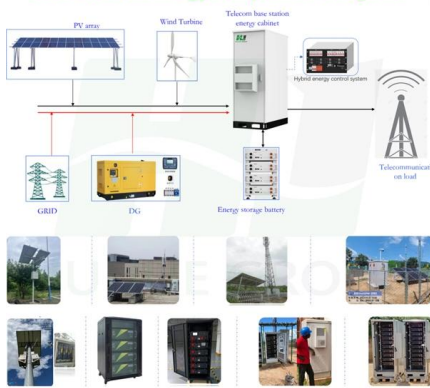
Within the distribution substations, high-voltage power is converted to lower voltages ideal for distribution. Distribution transformers at these substations reduce voltage

The Complete Guide to Distribution Box: Installation, Types & More

Busbars are metal strips or bars that distribute electrical power throughout the distribution box. They carry current from the main switch to individual circuit breakers, providing a reliable



Base station energy composition diagram



Power Distribution Boxes Explained Simply

A power distribution box plays a vital role in any electrical system. It receives electricity from the main supply and distributes it safely to various circuits



Power Distribution Box Essentials: Functions, Types

i) Main Distribution Box: This box is used in homes, industrial buildings, and commercial buildings. It receives electricity from the main power supply and



Electric Power Distribution System Basics , Electrical A2Z

The article provides an overview of electric power distribution systems, focusing on one-line diagrams, busways, and grounding. It explains how

Wiring of the Distribution Board with RCD (Residual

Electrical Wiring Installation of the Distribution Board with RCD (Single Home Phase Supply From Utility Pole & Energy Meter to the Consumer Unit. How to Wire RCD



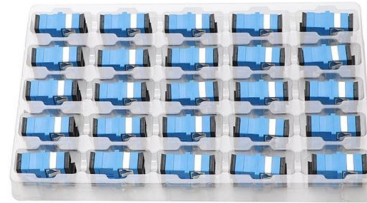
Distribution Boxes: Types and Functions

A distribution boxes acts as the load center and main distributor of electrical power within a building. Also called a distribution board, panel board,



Power Distribution Equipment

Introduction Power Distribution Equipment is a term generally used to describe any apparatus used for the generation, transmission, distribution, or control of electrical energy. This section concentrates



How Does a Power Distribution Box Work

In this article, we'll walk you through the step-by-step process of how power flows through a distribution box, what components are involved, and why each part is

Distribution Board Design: Standards, Surge Protection

A distribution board relies on several critical components to ensure safety, reliability, and efficient power distribution. The main devices include



Distribution Boxes Explained: Types, Functions, and

A distribution box serves a primary role in directing electrical current from the main power source to different circuits throughout a building. Beyond



Contact Us

For datasheets, pricing, or custom high-speed optical interconnect solutions, please visit:

<https://www.syropy.com.pl>