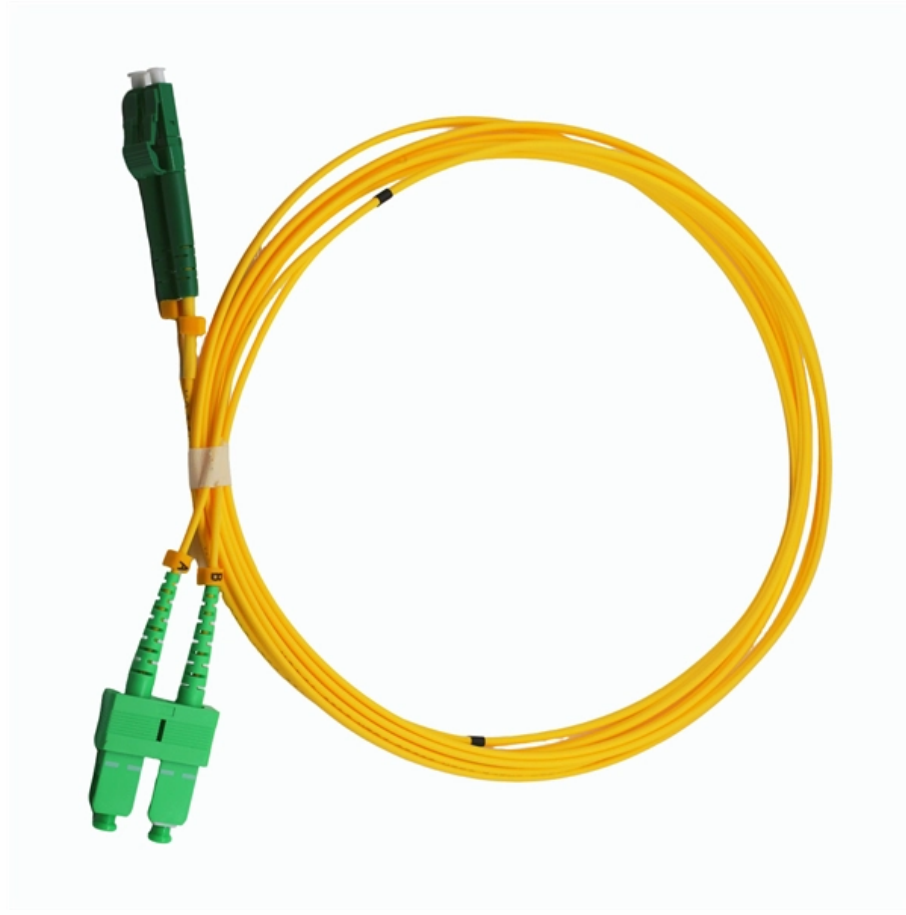


Cuba Anti-tracking Optical Cable G 654





Cuba Anti-tracking Optical Cable G 654



What is ITU-T G.654 Fiber

ITU-T Recommend G.654 fiber is a cut-off shifted single-mode optical fiber especially used for high bandwidth long distance transmission. The G.654

STL G654E 125 Fibre

International Standards STL G654E 125 Fibre complies or exceeds the recommendation of ITU-T G.654.E.



ITU-T

Document History ITU-T G.654 March 1, 2020
Characteristics of a cut-off shifted single-mode optical fibre and cable

High Speed Long-Haul Optical Fiber Solution

G.654.E single-mode fiber is deemed as a promising candidate to optimize the transmission performance for next-generation ultra high-speed long



ITU-T G.654.E Fiber, PureAdvance for Terrestrial Long-Haul Networks

0.16 dB/km or less, which are fully compliant with ITU-T G.654.E. In this whitepaper, we review ITU-T G.654.E fibers from various points of view; what G.654.E is, what the application of G.654.E is, why



G654-E Fiber Cable Specifications , PDF , Optical Fiber , Optics

G654-D Data Sheet v5 - Free download as PDF File (.pdf), Text File (.txt) or read online for free. Document of fibre



G654.E Fiber Optic Cables

Huihong Technologies Limited is a trusted and professional manufacturer specializing in G.654.E fiber optic cables, meeting the demands of cutting-edge





What is G.654.E fibre? What scenarios is it suitable for?

At present, the operators in the inter-provincial and intra-provincial trunk cable construction, the use of G.654.E optical fibre cable length of nearly 15,000 km,



ITU-T G.654

This very low loss cut-off shifted fibre (CSF) can be used for long-distance digital transmission applications, such as long-haul terrestrial line systems and submarine cable systems using optical

G.654 : Characteristics of a cut-off shifted single-mode optical

Characteristics of a cut-off shifted single-mode optical fibre and cable Superseded



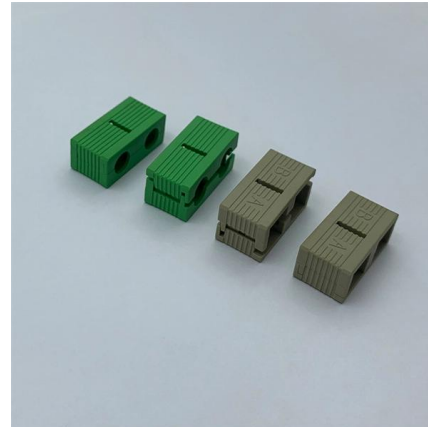
The Difference Between G652,G657A,G655 And G654

Optical cables are engineered to meet strict optical,mechanical,and environmental performance standards for reliable long-term operation. Optical



Recommendation ITU-T G.654 (08/2024)

Recommendation ITU-T G.654 describes the geometrical, mechanical and transmission attributes of a single-mode optical fibre and cable which has the zero-dispersion wavelength around 1300 nm



TXF Optical Fiber , Large Effective Area G.654.E Fiber

The superior attributes of TXF ® optical fiber, compliant to ITU-T G.654.E, allow for the provision of an additional network margin that can be leveraged to enable



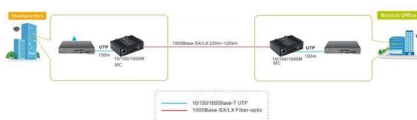
High-Speed Long-Haul Optical Fiber Solution

When deploying G.654.E fiber, careful installation, connector compatibility, testing, and future-proofing considerations should be taken into account. By leveraging the features and benefits



ITU-T Rec. G.654 (12/2006) Characteristics of a cut-off shifted single

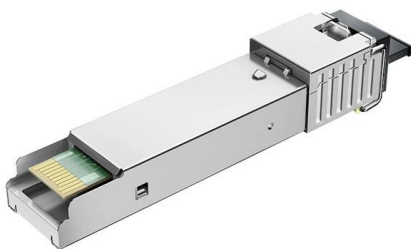
Table 1, G.654.A Attributes, is the base category for a cut-off shifted single-mode optical fibre and cable. This category is suitable for the system in ITU-T Recs G.691, G.692, G.957 and G.977 in the 1550





ITU-T Rec. G.654 (03/2020) Characteristics of a cut-off shifted single

Summary Recommendation ITU-T G.654 describes the geometrical, mechanical and transmission attributes of a single-mode optical fibre and cable which has the zero-dispersion wavelength around



The Difference Between G652,G657A,G655 And G654

G654 fiber supports ultra-long-distance submarine and backbone transmission with minimal signal attenuation. We can see from above that their

Novel ultra low loss & large effective area G.654.E fibre in

Abstract: The paper introduced latest ITU-T G.654.E fiber sepecification and typical G.654.E profile design. Our novel ultra low loss & large effective area fiber attenuation and cabling performance



G654-E Fiber Cable Specifications , PDF , Optical Fiber , Optics

Design and special properties o Light, thin and particularly robust cable o Cable for direct burial, in applications with high mechanical loads and in areas with rodents o Stranded minibundle (loose tube)



ITU-T RECOMMENDATION G.654

Characteristics of a 1550 nm wavelength loss-minimized single-mode optical fibre cable
Reedition of CCITT Recommendation G.654 published in the Blue Book, Fascicle III.3 (1988)
NOTES



Ultra-low loss terrestrial long-haul fibers PureAdvance(TM) series

Ultra-low loss (ULL) optical fibers, PureAdvance(TM) series compliant with G.654.E, support high-capacity long-haul terrestrial networks. Employing pure silica core technologies, we promise to contribute to

What is G.651,G.652,G.653,G.654,G.655,G.656 and

These are the standard types of optical fibers specified by ITU: G.651 is a multimode optical fiber. G. 652 is a regular single-mode optical fiber with zero



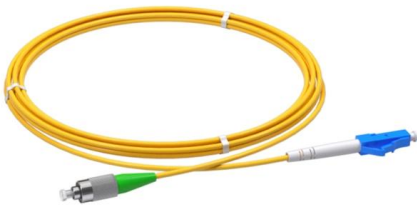
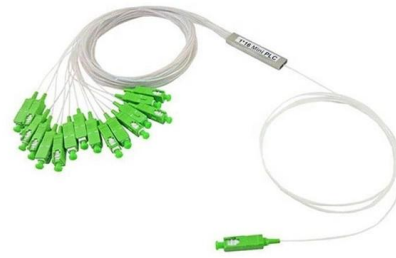
What is the difference between G.654 and G.652 fiber?

The use of G.654.E fiber increases the cost of fiber optic cable compared to G.652.D fiber, but the integrated measurement system saves investment and increased investment in fiber optic cable.



G.654 : Characteristics of a cut-off shifted single-mode optical

Recently posted - Search Recommendations
G.654 : Characteristics of a cut-off shifted single-mode optical fibre and cable



STL G654E 125 Fibre

To ensure the accuracy and precision of the manufacturing process, STL routinely calibrates and recertifies process equipment and measurement benches against internationally traceable standards

What Is The Difference Between G.654E and G.654C

Free Samples Available: Test our G.654.E fiber and other products before bulk orders! For high-speed, low-loss optical transmission, G.654.E fiber is



Introduction to

Optic fiber is the key to fiber optic network. What is fiber optic network? There are seven kinds of optic fiber according to ITU standard: G651, G652,



G.654 : Characteristics of a cut-off shifted single-mode optical

ITU Sectors Newsroom



Corning® TXF® Optical Fiber

The superior attributes of TXF® optical fiber, compliant to ITU-T G.654.E, allow for the provision of an additional network margin that can be leveraged to enable

Contact Us

For datasheets, pricing, or custom high-speed optical interconnect solutions, please visit:
<https://www.syropy.com.pl>