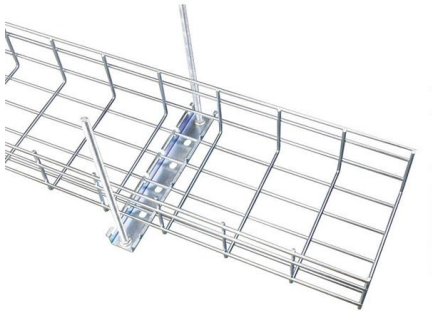


Cost-efficient cold aisle outdoor type





Cost-efficient cold aisle outdoor type



Aisle containment system buying guide

Discover the key factors to consider when choosing a hot aisle/cold aisle containment system. This buying guide will help you understand the features of an aisle containment system, learn the

Smarter Hot & Cold Aisle Containment for Data Centers

Discover how hot and cold aisle containment systems, enhanced with polycarbonate multiwall panels provided by thyssenkrupp Engineered Plastics, help data centers cut energy costs,



The Energy Efficiency Benefits of Cold and Hot Aisle

Hot-aisle containment ensures that the open server room area is colder and provides a more acceptable working environment for technicians and

Hot/Cold Aisle Containment , Data Center Containment

Hot and cold air containment systems designed to maximize cooling predictability, capacity, and efficiency at the rack, row or room level. Get flexible and cost



Cold Aisle Containment in Data Centers , Subzero

Energy Efficiency: Establish optimal operating efficiencies The natural airflow properties of cold air requires doors to prevent it from flowing out from the aisle



FOCUSED COOLING USING COLD AISLE CONTAINMENT

Cold aisle containment can be used with or without conventional raised floor cooling. It is easily retrofitted into existing raised floor data centers and works in tandem with the raised floor as well as



STAINLESS STEEL WIRE MESH

- Long-lasting and durable
- Comprehensive specifications
- Customized non-standard products



Hot Aisle vs Cold Aisle in Data Centers: Technical

Correct separation raises return-air temperatures, making CRAC units more efficient. According to EnergyStar, this can cut cooling costs by up to 43%.



How to Choose Between Hot and Cold Aisle Containment Systems

Both types of cold aisle containment use the same design approach. It is usually more cost-effective to employ a cold aisle containment system, but hot aisle containment typically proves to be more



Data Center Hot and Cold Aisle: A Quick Guide

A data center hot and cold aisle is a strategic layout for organizing server racks to manage airflow and enhance cooling

Hot Aisle Containment vs. Cold Aisle Containment:

Implementation of both hot and cold aisle containment does not reduce the volumetric flow rate of bypass airflow in a computer room. When cold



What are hot and cold aisles in the data center?

Using hot and cold aisles in a data center is part of an energy-efficient layout for server racks and other computing equipment. Find out more here.

Cold Aisle Containment: Complete Implementation Guide for Data



Complete cold aisle containment guide for data centers. Learn CAC benefits, implementation steps, and achieve 35% cooling cost reduction.



Hot Aisle vs. Cold Aisle Containment for Data Centers

Hot Aisle Containment vs. Cold Aisle Containment The goal of hot and cold aisle contaminants is very similar, even if they are entirely different



Hot vs Cold Aisle Containment: Which Datacenter Cooling Strategy Is

Despite its advantages, cold aisle containment comes with several challenges that require careful consideration. The most significant limitation is its reduced efficiency compared to hot aisle



Hot and Cold Aisle Containment: How it Works,

Cold-Aisle Containment (CAC) This approach is cost-effective and allows for more uptime and a greater amount of servers within a given area.



Hot Aisle vs Cold Aisle Containment: Full Guide

Hot and cold aisle containment systems are key in keeping data centers cool. We'll look at their main differences to help you choose the right one for your needs.



A DEEP DIVE INTO THE WORLD OF HOT & COLD AISLE

THE GREEN GRID: ASHRAE Data Center Cooling Guidelines: Developed in collaboration with ASHRAE, this document provides best practices for data center cooling, including hot and cold aisle



A comprehensive review of portable cold storage: Technologies

In recent years, there has been a substantial increase in the usage of portable cold storage technologies, as the demand for flexible and mobile solutions for storing perishable goods



Hot Aisle vs Cold Aisle Containment Explained (Data Center Cooling)

Hot aisle vs cold aisle containment explained. Learn how airflow control improves data center cooling efficiency and reduces energy costs.



Hot vs Cold Aisle Containment: 40% Cooling Savings

Discover how hot and cold aisle containment revolutionizes cooling efficiency, cuts energy costs by up to 40%, and extends equipment lifespan. |

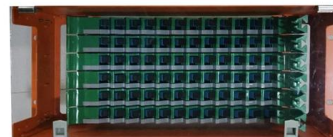


Cold & Hot Aisle Containment For Data Center Efficiency

Cold aisle and hot aisle containment systems have emerged as essential strategies in modern data center airflow management. While these

Maximising Efficiency: The Benefits of Hot and Cold

The choice between hot aisle and cold aisle containment depends on numerous factors, including the data centre's layout, existing infrastructure,



Implementing Hot and Cold Air Containment in Existing Data Centers

The best containment solution for an existing facility will depend on the constraints of the facility. While ducted hot aisle containment is preferred for highest efficiency, cold aisle containment tends to be



Data Center Containment 101

The use of cold aisle containment or hot aisle containment is typically determined by accessing the facility constraints and reviewing potential solutions. Regardless of which type of containment is

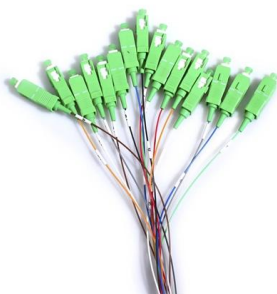


Hot and Cold Aisle Containment in Data Centers

Discover what hot and cold aisle containment is all about. Data centers are often made up of hot and cold aisles. Overall efficiency can be impacted by

Move to a Hot Aisle/Cold Aisle Layout

A Time-tested Technique The hot aisle /cold aisle data center layout was originated by IBM in 1992 and it is one of the oldest ways to save energy in the data center.



Aisle Containment Systems for Hot & Cold Aisle Solutions

Cool Shield Aisle containment solutions reduces server row temperatures in active data centers. Learn more about the benefits of hot and cold containment.



Lepin Network , Cold Aisle Containment system

The aisle containment system is a modular rowbased thermal containment solution, which separates cold and hot data center air streams to and from equipment. It manages airflow at the source,

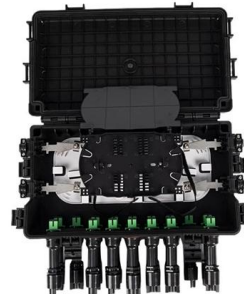


Data Centre Cooling: Hot Aisle and Cold Aisle Design

Energy efficiency: by concentrating cooling efforts in the cold aisle, rather than the entire data centre, energy efficiency is significantly enhanced. This approach

Cut Cooling Costs with Hot & Cold Aisle Containment , STULZ

Discover how hot and cold aisle containment improves cooling efficiency, cuts energy costs, and supports uptime in modern data centres.



Contact Us

For datasheets, pricing, or custom high-speed optical interconnect solutions, please visit:
<https://www.syropy.com.pl>