

Correct wiring method for wired junction boxes





Overview

Advice on wiring electrical junction box with easy to follow junction box wiring diagrams, including information on 20 and 30 amp junction boxes. These unassuming enclosures serve as central connection points, ensuring safe and organized distribution of electrical power throughout your home. A junction box is a protected space where wires can meet, splice, branch, or terminate. A junction box does three jobs at the same time: If you've ever opened an old box and smelled that "warm plastic" odor, you already know why.



Correct wiring method for wired junction boxes



Demystifying Junction Box Wiring: Everything You Need

Learn about junction box electrical wiring, including how to install and troubleshoot wiring connections in junction boxes for electrical circuits.

Junction Box Wiring: Understanding the Basics for Electrical Projects

Learn the fundamentals of junction box wiring for your home electrical projects. This guide covers essential basics, safe connection techniques, and everything you need to understand



Instructions for using PH series junction boxes

The PH series junction box is a device designed specifically for electrical wiring and circuit protection, suitable for residential, commercial, and industrial environments. Before use, it is necessary to verify



How to Wire a Junction Box for Socket and Light Circuits

Working with Electricity and Junction Boxes
What Are Junction Boxes and What Are They Used for?
Types of Electrical Junction Box Explained
How to Wire A Junction Box
Fixing Cables Into The Junction Box
Which Colour Wires



Are Which?Securing A Junction Box Once Installed - The RulesThis section explains how to wire a traditional or standard style junction box. It doesn't matter about the rating or number of terminals, the process is the same in each case.See more on diydoctor .ukelecsprout

Wiring Diagram for Junction Boxes: Simplifying Electrical Connections

See More

Learn how to properly wire a junction box with this wiring diagram. Follow step-by-step instructions for a safe and efficient electrical installation.



Junction Box Installation: A Step-by-Step Guide for Safe

Additionally, position the box away from direct exposure to elements to enhance durability. What is the proper method for wiring a junction box in the

DIY Wiring: How to Safely Install and Use Junction Boxes

The Takeaway The proper installation and use of junction boxes are paramount for a safe and efficient electrical system in your home. By



Wiring and Installation Guide for Junction Boxes

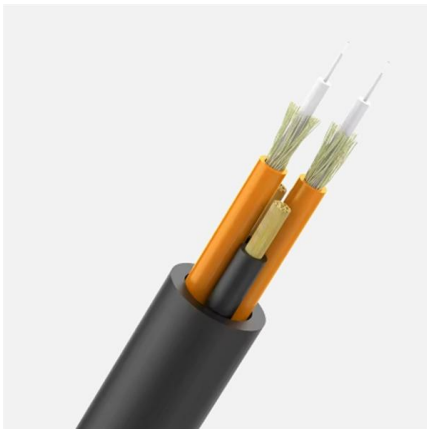
When inspecting your home's electrical system, you'll find various components, including cables, outlets, switches, circuit breakers, and an



essential box known

How to Wire a Junction Box for Socket and Light Circuits

Learn how to wire a junction box to provide power to additional sockets, lights and switches easily and safely



Wiring a Junction Box: Safety and Basics

Keep your home safe! Understand junction boxes, their role & how to install them correctly. Read our expert guide.

6 Terminal Junction Box Wiring Diagram: A Complete

Learn how to wire a terminal junction box with a detailed diagram. This article provides 6 different wiring diagrams for various applications.





How to Install a Junction Box Safely and Correctly 2026

Learn how to install a junction box safely, from choosing the right box and mounting it correctly to making secure splices and following basic code-safe



How to Properly Wire a Junction Box

Ensure your electrical work is safe and up to code. Master the steps for identifying wires, making secure splices, and finishing a junction box installation



Guide to Junction Boxes

The wiring method illustrated here is a common cause of non-compliance particularly with lighting circuits and the connections to downlighters in particular. flex is not enclosed. This is due to the

4 Pro Methods for Wiring Metal Junction Boxes Like a Master

I will walk you through 4 different ways to bring wire into a metal box so you can apply these new skills on your next DIY electrical projects.





Best Practices for UK Junction Box Wiring

Guidelines for wiring junction boxes in the UK. Learn the proper techniques and regulations to ensure safe and reliable electrical connections.

12 Types of Electrical Boxes and How to Choose

Learn about the many common types of wall and ceiling electrical boxes for switches, outlets, light fixtures, ceiling fans, and junction boxes.



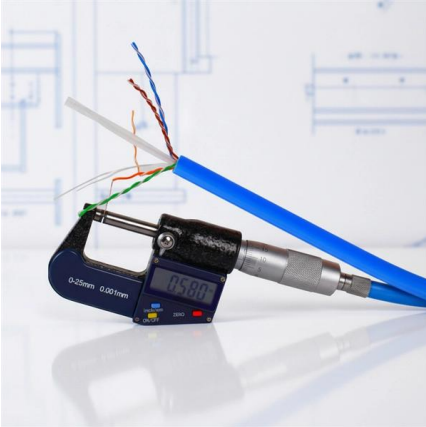
How to Install a Junction Box

A junction box provides a code-approved place to house wire connections, whether for outlets, switches, or splices. Here's how to install one.

How to Properly Connect Wires in a Junction Box

Step-by-step guide to properly connecting and securing electrical wires in any junction box, ensuring safety and electrical code compliance.





Correctly Wiring Junction Boxes

In this guide, we have covered step-by-step the correct selection, installation, and wiring of a junction box. We emphasized the importance of the protection class, for example, IP55, to ensure a safe

How to Wire a Junction Box: Step-by-Step Safety Guide

How to wire a junction box safely, avoid common mistakes, and choose the right box for indoor, outdoor, and OEM use.



How to Wire a Junction Box for Electrical Connections

A junction box is a protective enclosure used to house and protect electrical connections or splices in a wiring system. This metal or plastic housing contains wire connections, protecting

How to connect wires in junction box: 4 Techniques You Need to

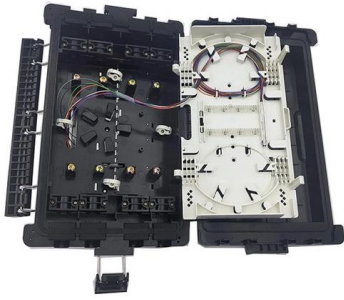
Whether you're a DIY enthusiast or a seasoned pro, this video is a must-watch for anyone working with electrical wiring. Don't miss out on mastering the art of wire connections!





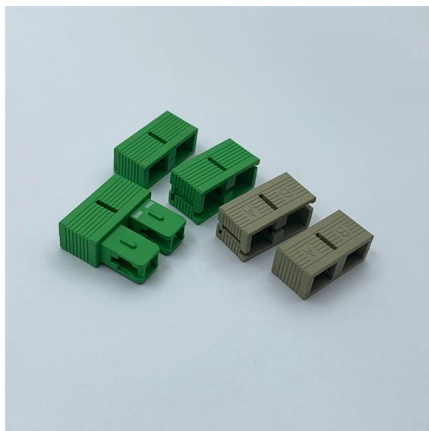
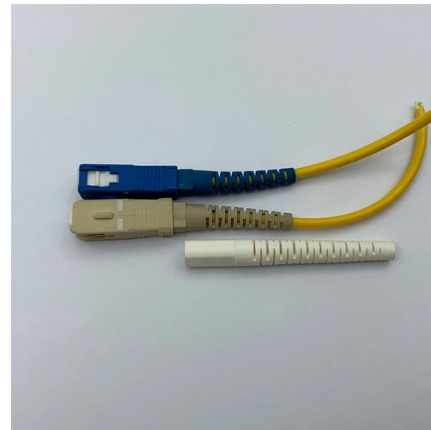
Wiring a Junction Box: Safety and Basics

Upgrading your junction boxes can offer several benefits: Benefits of Upgrading Junction Boxes Improved safety: Modern junction boxes often come



How to Install an Electrical Junction Box

If your house has visible wiring splices or if you need to add a new splice to extend a circuit, follow these simple steps to

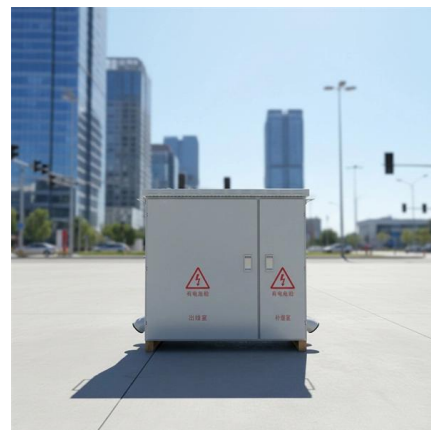


Junction Box Wiring: The Complete Guide (NEC Compliant)

Master junction box wiring with our expert guide on NEC safety rules, proper wire splicing, and troubleshooting common DIY errors. Ensure your home's safety today!

How to Install a Junction Box for Electrical Wiring

A junction box is a protective container designed to house and shield the connections, or splices, of electrical wires within a circuit. This enclosure, typically made of metal or plastic, is an





The Ultimate Guide to Terminal Junction Box Wiring:

Learn how to properly wire terminal junction boxes for electrical connections. Understand the importance of proper wiring techniques, safety precautions, and

A Step-by-Step Guide to Creating a Junction Box Wiring Diagram

Learn how to read and understand a wiring diagram for a junction box. Find out how to properly connect and troubleshoot electrical connections.



Contact Us

For datasheets, pricing, or custom high-speed optical interconnect solutions, please visit:
<https://www.syropy.com.pl>