

# **Correct Method for Cable Trays to Pass Through Walls**





## Correct Method for Cable Trays to Pass Through Walls

---



### How To Run Wires Through Walls

Running electrical cable inside finished walls starts with marking the framing and planning the best cable route. Cable can be "fished" through framing

### A Guide to Installing and Supporting Electrical Cable Trays

This guide covers the critical steps, from selecting the right electrical cable tray and performing accurate cable fill calculations to managing a safe cable pull through



### How to run wires through walls horizontally?

Check out our detailed step-by-step guide on how to run wires through walls horizontally and the considerations before you drill into your walls.

### Cable Tray Installation and Maintenance Considerations

Learn about effective Cable Tray Installation and Maintenance. Get practical tips for planning, fitting, and looking after your cable trays.



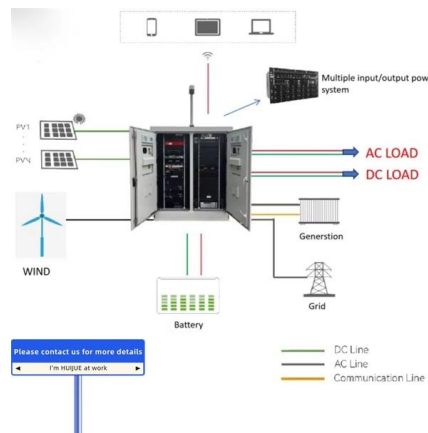
### How To Install Cable Tray On Wall: A Step-By-Step Guide

Learn how to install a cable tray on a wall with this comprehensive guide. Step-by-step instructions, tools needed, and safety tips included.



### How To Use Cable Tray Architecture To Finish A Wall?

This guide provides step-by-step instructions on installing a cable tray on a wall, covering different types of cable trays, tools needed, and safety tips.



### Safely Run Cables Through Your Wall and More

Check Behind Your Walls Before running any cables, know what's behind your walls. Use a stud finder all around the area where you plan to put the



## Guide to cable support systems

This chapter deals with the correct dimensioning and the final selection of a cable support system, depending on the application, according to various influencing factors, such as cable volume, cable



## Best Practice Guide to Cable Ladder and Cable Tray Systems

This guide covers cable ladder systems, cable tray systems, channel support systems and associated supports intended for the support and accommodation of cables and possibly other electrical

## Guide to cable support systems

A cable support system consists of cable support lengths and system components, such as cable support fittings, support elements, mounting elements and system accessories. The cable support



## Cable Installation Through Walls: Easy Steps for Your

Cable installation through walls transforms your home networking setup from cluttered chaos to clean professionalism with just a few simple tools and



## Cable Tray Installation

Learn everything about cable tray installation with our complete guide. Discover types, steps, and safety tips for efficient electrical cable management.



### 5 Steps to Learn How to Install Cable Trays

Installing a cable tray system requires careful planning to ensure it can support the weight of the cables and adheres to electrical safety codes. Here

### Method Statement installation of Cable Trays and Ladders

This method statement covers the site installation of the cable tray & ladders and the requirements of checks to be carried out.



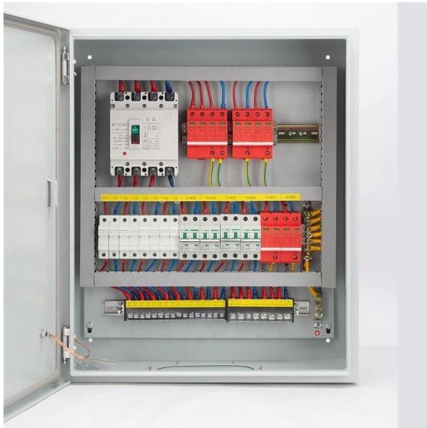
### How to Run Cable Through a Finished Wall

These brackets provide a stable foundation for the chosen wall plate. For low-voltage cables, a brush plate or grommet insert is the preferred finish, allowing cables to pass directly through the plate while



## Mastering Cable Tray Installation , Step-by-Step Guide for a Seamless

Learn how to install cable trays correctly. Get the ultimate step-by-step guide on setting up a seamless and reliable cable management system.

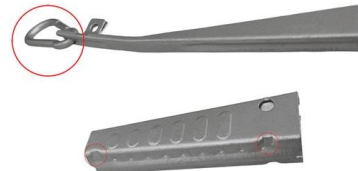


### Technical Guidelines for Cable Tray Installation and

When cable trays pass through walls or floors, seal openings using fire-rated penetration sealing materials. Only use fireproof trays for flame containment or

### Through Partitions and Walls , UpCodes

Cable trays can be installed across partitions and walls, as well as vertically through platforms and floors, in both wet and dry environments. However, these installations must comply with the



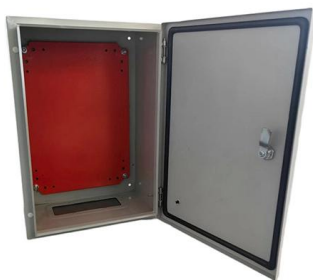
### How to Install Cable Tray: A Comprehensive Guide to Different Cable

Welcome to our step-by-step guide on installing cable trays! In this video, we'll explore the different types of cable trays available and provide detailed instructions for their installation.



## How To Run Cable Wires Through A Wall? Follow

What to Avoid: Keep cables away from electrical lines and light fixtures to prevent interference and hazards. Avoid using damaged or inferior-quality



## Installation Of Cable In Cable Trays: NEC, Safety

Installation of Cable in Cable Trays ensures proper routing, cable management, NEC compliance, grounding, fire safety, and load capacity.

## Cable Tray SHIB NAL

Cable trays are not raceways, but they are treated as a structural component of a facility's electrical system. Cable trays are a part of a planned cable management system to support, route, protect and



## Contact Us

---

For datasheets, pricing, or custom high-speed optical interconnect solutions, please visit:  
<https://www.syropy.com.pl>