

Core switches support 10 GePont





Core switches support 10 GePont

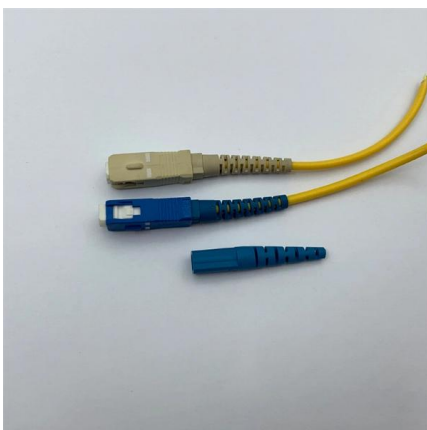


H3C S6520X-EI Series Enhanced 10GE Switches

Visualization Ability H3C S6520X-EI series switches support Telemetry technology, which can send the switch's real-time resource information and alarm information to the O& M platform through the gRPC

10 Gigabit Ethernet Smart Managed Switches

Supporting a combination of 10GBASE-T and SFP ports, the DXS-1210 Series provides connection flexibility across a network, allowing easier network integration.



10 gig switch vs 2.5 gig vs 1 gig: Which do you need?

There are so many choices among network switches these days. Especially in the home lab or consumer market there are now great choices for 10

10Gb Switch Concepts, Parameters, and Application Scenarios

In high-performance computing environments, the 10Gb/s Switch connects computing nodes and storage systems, supporting large-scale computation and data processing, ensuring high



Compare 200 and 1000 Series Sophos Switches

Compare Sophos 200 and 1000 Series switches. Our 2.5 and 10 GE multi-gigabit switches ensure faster connectivity across the network and prevent bottlenecks

Cisco Nexus 5600 Platform 10-Gbps Switches Data Sheet

The Cisco Nexus 5600 platform 10-Gbps switches are designed for Top-of-Rack (ToR) and Middle-of-Row (MoR) deployment in data centers that support enterprise applications, service



L3-10XGF12: Layer 3 12-port 10G Managed Full Fiber Switch

The L3-10XGF12 is ideal for use as core switches in large-scale data centers and core switches in campus networks. L3-XGF Series switches are available in 12-port and 28-port L3-XGF28 models,



L2 Switch 10G

Talk to our experts today! Edgecore Wi-Fi.
Choose the network that's right for you.

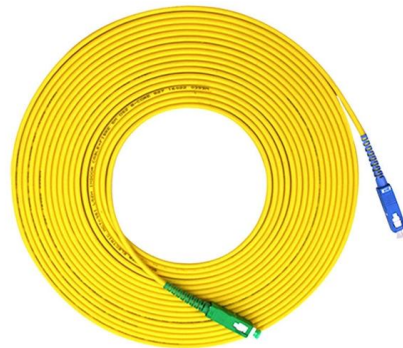


25GE and 100GE - Enabling Higher Speeds in Enterprise with

Cisco Catalyst 9500 and 9600 Series switches are the industry's first purpose-built fixed and modular-configuration 25G, 40G, and 100G line of switches for enterprise-class core and aggregation layers

Cisco 48 port 10G sfp based switch selection

From this switch meraki MS250-48FP switch will be connected (sfp to sfp) So also please suggest compatible 10G sfp module. Please help me to find a appropriate model of this core switch.



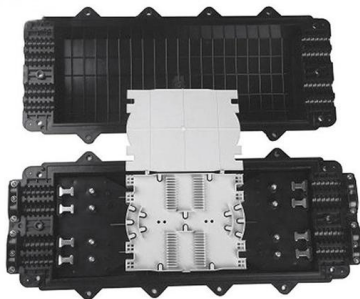
10 Core Dedicated Server With 24/7 Support

Why should I choose RedSwitches for 10 Core Dedicated Servers? RedSwitches provides premium dedicated server hosting with customizable dedicated server



H3C S6520X-HI Series Advanced Aggregation 10GE

H3C S6520X-HI series switches -- Industry-leading high performance and scalable 10GE access switching solution developed by H3C using ASIC technology with



Edgecore Networks Launches ECS5500-12T/12P:

Edgecore Wi-Fi announced the launch of the ECS5500-12T and ECS5500-12P, two high-performance 10G Layer 2+/Lite L3 multi-Gigabit access

10 Gigabit SFP Switches , 10 Gig SFP Switch , 10Gbs

VERSITRON's 10 Gig SFP Switches feature 4x 1G/10G SFP/SFP+ ports, providing high-speed fiber connectivity ideal for large enterprises and data centers. These



The Ultimate Guide to Choosing the Right 10G Network

A: Indeed, there is a variety of 10-gigabit ethernet switches, such as core switches and edge switches, as well as top-of-rack switches which all



ET1D2S24SX2S-24-Port 10GE SFP+ Interface and 8-Port GE SFP

10GBASE SFP+/1000BASE-X ports support 10GE and GE auto sensing. Table 7-259 describes the attributes of a port working in 1000M mode, and Table 7-260 describes the attributes of a port



H3C S6520X-SI Series

H3C S6520X-HI series switches support M-LAG, which enables links of multiple switches to aggregate into one to implement device-level link backup. M-LAG is applicable to servers dual-homed to a pair

Nodexon's Core Aggregation Switch

As an access device on enterprise networks, the switch can provide GE connections for desktop applications. It can also be used as a core device on small- and medium-sized enterprise networks.



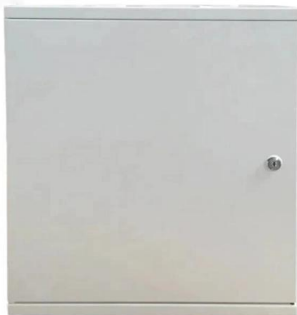
H3C S6530X Series Advanced Aggregation 10GE Switches

More importantly, it implements flexible network flow control and provides a well-defined network platform for core network application and innovation. H3C S6530X series switches support a large



QFX10000 Modular Ethernet Switches Datasheet

Learn about the QFX10000 Modular Ethernet Switches in this data sheet featuring product details, benefits, specifications, and ordering information.

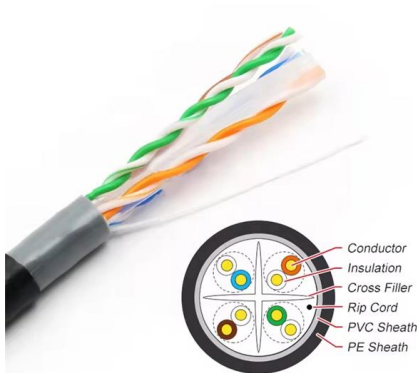


CloudEngine S5736-S Series Switches , Huawei Enterprise

CloudEngine S5736-S Series are switches designed for the Wi-Fi 6 era, featuring 24 downlink ports, four 10 GE uplink ports and one extended slot. Learn more.

QFX5100 Series 10/25/40/100GbE Switches

The QFX5100 Series are access & top-of-rack 10/25/40/100GbE switches, optimized for application delivery & virtualized data centers.



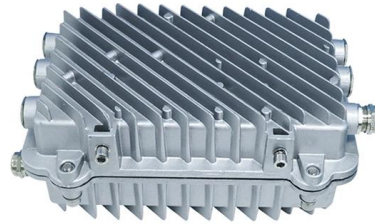
Core Switch vs. Distribution Switch vs. Access Switch

Comprehensive guide to Core, Distribution, and Access Switches. Roles in the network and important parameters explained.



Is it possible to connect a 10Gbe switch to a 1Gbe core switch and get

My question is if I connect 350XG to the core switch will I attain 10Gbe speeds on any devices I connect to the 350XG? Short Answer, yes. The SG350XG will move traffic at 10 GB

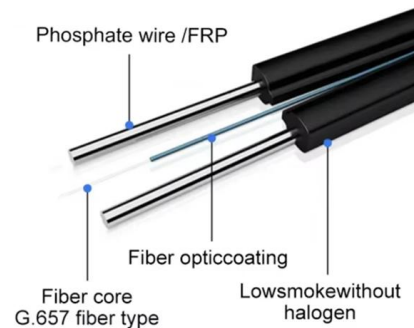


L3-10XGF12: Layer 3 12-port 10G Managed Full Fiber

With high switching capacity, the L3-10XGF12 support wire-speed L2/L3 forwarding and high routing performance for IPv4 and IPv6 protocols. The 10 Gigabit

10 Gb Gigabit Switches , NETGEAR

Optimize your network with NETGEAR 10 Gb switches. Pick from unmanaged or smart/fully managed for VLAN, QoS, and IGMP support via copper or SFP+



Cisco Switch Selector

Quickly identify the right Cisco switch for your needs, whether you're looking for a new switch or upgrading an old one for an enterprise LAN, a data center,



Best 10Gb Switch for SMB in 2025: Unlock Next-Gen Network

Upgrading to 10 Gigabit Ethernet (10GbE) switches is a critical step to overcome bottlenecks and future-proof SMB networks. This guide is designed for network engineers, IT



ECS5550-54X

The ECS5550-54X has 48 x 10GbE SFP+ ports and 6 x 100GbE uplink ports. This switch are designed for carrier/enterprise aggregation or small data center top-of

Contact Us

For datasheets, pricing, or custom high-speed optical interconnect solutions, please visit:

<https://www.syropy.com.pl>