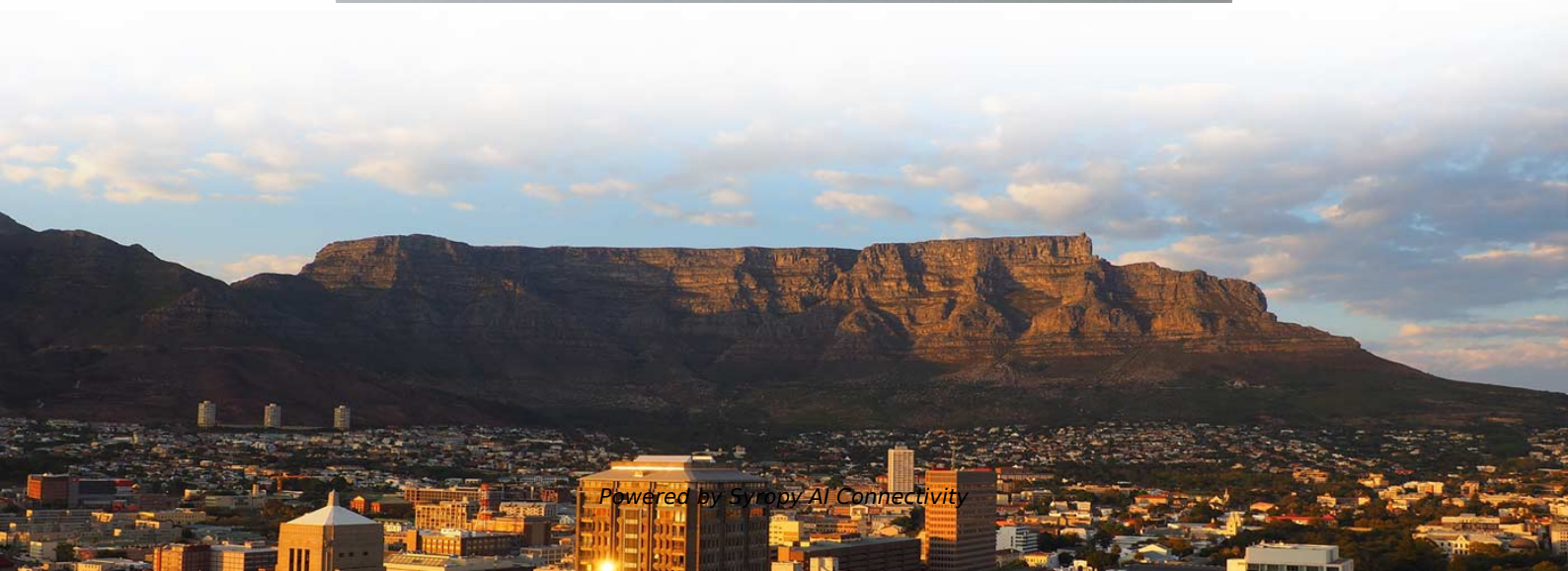


# **Core layer switch ciscows- c4948-e**





## Core layer switch ciscows-c4948-e

---



### Cisco WS-C4948E

Designed for server aggregation, it targets enterprise data centers, financial networks, and campus environments needing reliable rack-level switching. Key features include 48 wire-speed

### data\_sheet\_c78-598933.docpdf

The Cisco Catalyst® 4948E and 4948E-F Ethernet Switches are the Cisco Catalyst 4900 Series data center switches built from the start to deliver best-in-class, full-featured server-access switching.



### Catalyst 4948 Installation Guide

hardware description power supply 9 heat dissipation determining 4 I installing the switch guidelines 2 lifting 4 procedure 6 safety overview 5

### WS-C4948E

The Cisco WS-C4948E is a high-performance, fixed-configuration switch designed for enterprise and data center networks. It is part of the Cisco Catalyst 4900 Series switches and offers advanced

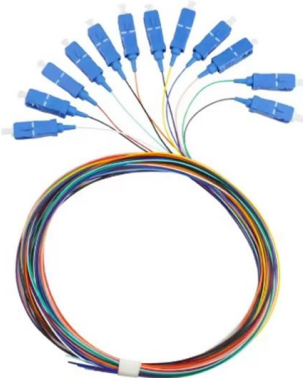


### **WS-C4948E , Cisco Switch , Catalyst 4900 Series**

Designed in a compact form factor, this switch provides Layer-2 and Layer-3 functionality suitable for various applications requiring reliability and performance at scale.

#### **WS-C4948E Datasheet Overview**

Overview Cisco 4948E Switch WS-C4948E  
Catalyst 4948E, opt sw, 48-Port 10/100/1000+ 4 SFP+, no p/s



#### **WS-C4948E-F Datasheet Overview Specificati**

Overview Cisco 4948E Switch WS-C4948E-F Cat  
4948E-F,opt sw,48x 10/100/1000+ 4 SFP+,no PS,Fr Ext



## WS-C4948-E

The Cisco WS-C4948-E, or Cisco Catalyst 4948, enhanced multilayer software image, one AC power supply, with fan tray, is a wire-speed, low-latency, 1 RU fixed-configuration switch for rack-optimized

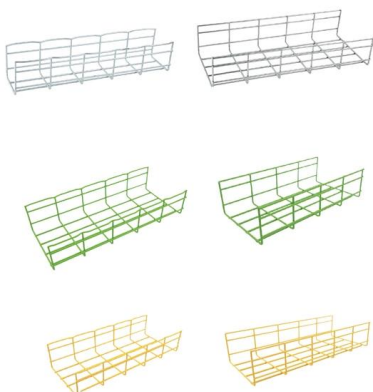


## Cisco Catalyst 4948 10 Gigabit Ethernet Switch Data Sheet

Based on the proven Cisco ® Catalyst 4500 Series hardware and software architecture, the Cisco Catalyst 4948 10 Gigabit Ethernet Switch offers

## Cisco Catalyst 4948E and 4948E-F Ethernet Switches At-a-Glance

The Cisco Catalyst® 4948E and 4948E-F Ethernet Switches (Figure 1) are server-rack-optimized top-of-rack (ToR) solutions for next-generation data centers. The Cisco Catalyst 4900 Series Switches offer



## Cisco Catalyst 4948 Switch Data Sheet

The Cisco Catalyst ® 4948 Switch is a wire-speed, low-latency, Layer 2 to 4, 1-rack-unit (1RU), fixed-configuration switch for rack-optimized server switching.



## Cisco WS-C4948-10GE , Installation Guide

an overview of Catalyst 4948-10GE features:

- o Layer 2, Layer 3, and Layer 4 switching services
- o Support for 55,000 MAC addresses for Layer 2 switching
- o Support for 4,096 VLANs and 4,096 VLAN



### Cisco 48x 10/100/1000 (RJ45)+4x10GbE (SFP+), L2/L3,

The switches include identical features except that the Cisco Catalyst 4948E offers front-to-back cooling, and the Cisco Catalyst 4948E-F offers back-to-front cooling.

### data\_sheet\_c78-598933.docpdf

Product Overview The Cisco Catalyst® 4948E and 4948E-F Ethernet Switches are the Cisco Catalyst 4900 Series data center switches built from the start to deliver best-in-class, full-featured server



### CISCO 4948 DATASHEET Pdf Download , ManualsLib

View and Download Cisco 4948 datasheet online. Cisco Switch Data Sheet. 4948 switch pdf manual download. Also for: Catalyst 4948-10ge.



## Catalyst 4948 Installation Guide

AC Power 3 DC Power 3 environmental 2  
switching components 3 startup sequence 3  
status LED 7 system specifications 1

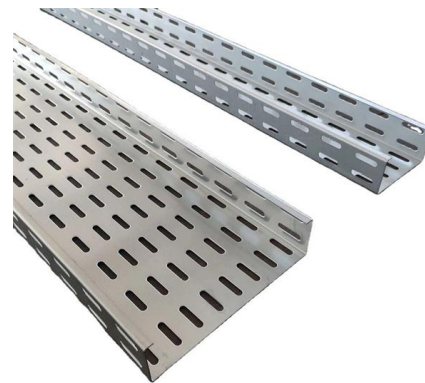


### WS-C4948E-F , Cisco Switch , Catalyst 4900 Series

Shop Cisco WS-C4948E-F switch at NetworkTigers with 48 ports, Layer 3 performance and compact form; refurbished and new. Fast shipping, 365-day

### Product Overview

Catalyst 4900 Series Switch Applications The Catalyst 4900 series switches (see Figure 1-1, Figure 1-2, and Figure 1-3) are designed for high-performance, high-density edge switching applications. They



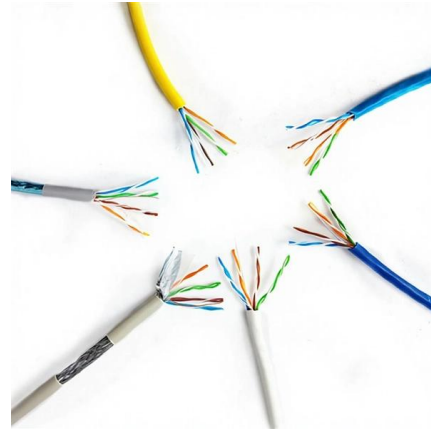
### Cisco Catalyst 4900 Series Switches

Cisco Catalyst 4900 Series Switches - Learn product details such as features and benefits, as well as hardware and software specifications.



### Catalyst 4948

The Cisco® Catalyst® 4948 is a wire-speed, low-latency, Layer 2-4, 1-rack-unit (1 RU ) fixed-configuration switch for rack-optimized server switching. Based on the proven Cisco Catalyst



### WS-C4948-S , Cisco 4948 Switch , AMNET Global



WS-C4948-S: Cisco 4948 Switch WS-C4948-S, 48-ports-L3-Managed, Rack-mountable 1U, Gigabit Ethernet The Cisco Catalyst 4948E Ethernet Switch is

### Cisco 48x 10/100/1000 (RJ45)+4x10GbE (SFP+), L2/L3,

The switches are designed to simplify data center architecture and operations by offering service provider-grade hardware and software in a one-rack-unit (1RU)



### Cisco Catalyst 4948E-E 48 port 4948E-F Ethernet Switch (WS)

The Cisco Catalyst 4948E and 4948E-F support three levels of Cisco IOS Software. The basic level is LAN Base, developed for deployments that require data center-class hardware along with Layer 2





## Cisco Catalyst 4948E and 4948E-F Ethernet Switches At-a-Glance

The Cisco Catalyst® 4948E and 4948E-F Ethernet Switches (Figure 1) are server-rack-optimized top-of-rack (ToR) solutions for next-generation data centers. The Cisco Catalyst 4900 Series Switches offer



## Cisco Catalyst 4948E and 4948E-F Ethernet Switches At-a-Glance

Table 3 provides ordering information for the Cisco Catalyst 4948E and 4948E-F switches. With more than 10 million Cisco Catalyst 4900 Series ports deployed, the Cisco Catalyst 4948E and 4948E-F

### Cisco WS-C4948E

Cisco Catalyst 4948E provides up to 96 Gbps switching fabric and 72 mpps wire-speed forwarding rate. This ensures high efficiency in Layer 2 to Layer 4 packet processing, supporting bandwidth-intensive



## Contact Us

---

For datasheets, pricing, or custom high-speed optical interconnect solutions, please visit:  
<https://www.syropy.com.pl>