

# **Core Switch Security Settings**





## Core Switch Security Settings

---



### Security Hardening Checklist Guide for Cisco

Network infrastructure devices (routers, switches, load balancers, firewalls etc) are among the assets of an enterprise that play an important role in security and thus

### 18 Configuring Switch Security

Management security in any switch in the Cisco MDS 9000 Family is implemented using the Command-line interface (CLI) or Simple Network Management Protocol (SNMP). The SNMP agent supports



### What Is a Core Switch in Networking?

By carefully selecting, configuring, and managing your core switch, you can ensure optimal performance, scalability, and security for your network.

### Secure Router & Switch Configurations: Best Practices

Expert guide on secure router and switch configurations to protect your computer networking products and defend against cyber threats.



### Cisco Switch Security Best Practices

This is a summary and command reference for Cisco Switch Security Best Practices from the Cisco CCNP material. 1. Configure secure passwords \* Use the enable secret command to set



### Security Hardening Checklist Guide for Cisco Routers/Switches in 10

In this article, we will explore basic switch security concepts and best practices to ensure a secure network environment.



### Strengthen Your Network: Essential Switch Security Practices and

Enhance your network's security with our comprehensive Switch Security guide, covering best practices, protocols, and configurations for robust protection.





## ECS2100 Series CLI Reference Guide

The switch can be configured to accept management commands from Simple Network Management Protocol (SNMP) applications such as Edge-Core ECVIEW Pro. You can configure the switch to



## Turn On or Off Core Isolation Memory Integrity in

How to Turn On or Off Core Isolation Virtualization-based Security for Memory Integrity in Windows 10 The Windows 10 Creators Update introduced a

## What is Core Switch and How to Choose?

Discover what a core switch is and learn how to choose the right one for your network. Explore key features in selecting a core layer switch. Make



## What is a Core Switch?

What is a Core Switch? A Deep Dive A core switch is the backbone of a network, providing high-speed switching for data packets between different network segments; essentially, it's



## Understanding Core Switch: What It Is and How to

Redundancy in a core switch is vital for safeguarding network security. It's essential to choose a switch that offers substantial redundancy to ensure a



### Differences Between the Core Switch and Normal

The so-called core switch is for the network architecture. If it is a small local area network with several computers, a small switch with 8 ports can be

### Core Switch Explained: Key Functions and Benefits

Core switches sit at the heart of a network's structure. In smaller networks, you usually find one core switch, sometimes two for backup. They are essential for moving data through the



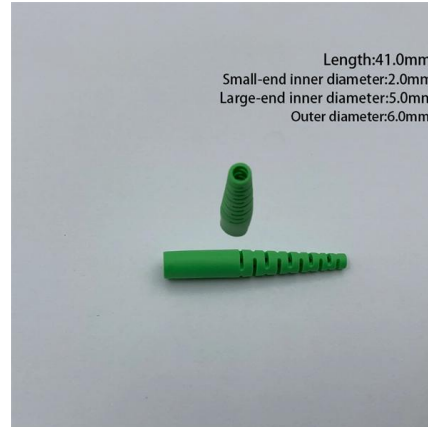
### Access security features

This section provides an overview of the switch access security features, authentication protocols, and methods. For more in-depth information, see the references provided (all chapter and page



### What Is a Core Switch in a Network?

Define the core switch--the central, high-speed backbone required for aggregating and routing massive volumes of enterprise network traffic.



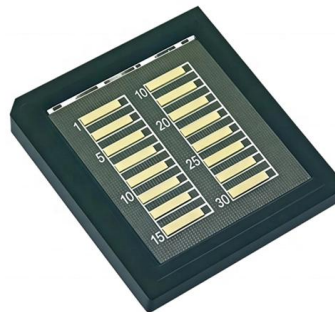
PRODUCT CATEGORY				
Open rack Series	Open Rack	12U Apert open rack	18" Deep Wall rack	Adjustable Depth Open rack
Wall mount rack Series	Glass door Wall mount rack	Mesh door Wall mount rack	Double section Wall mount rack	Economic type Wall mount rack
Floor standing server rack	Glass door with casters	Mesh door with casters	42U Standard Server rack	Double open door Server rack
Outdoor cabinet	air conditioner Outdoor cabinet	Outdoor cabinet with plinth	Outdoor cabinet with fan cooling	Double Wall Outdoor cabinet
Splitter series	Bare Fiber Splitters	Blackless Fiber Splitters	ABS Splitter	Fiberout Splitters
Splitter series	LSX Splitters	Rack Mount Splitters	Mix Plug-in Type Splitter	Tray Splitters
Patch cord series	LC	SC	FC	LC
FTTH product series				

### Basic Switch Security Concepts Explained

In this article, we will explore basic switch security concepts and best practices to ensure a secure network environment.

### Harden IOS Devices

This document describes the information to help you secure your Cisco IOS® system devices, which increases the overall security of your network.



### What Is Core Switch?

A core switch is the high-capacity networking switch that forms the backbone of a network, directing data traffic between different network segments and ensuring efficient



## Network Switch Security 101 , ServerMania

Implementing strong switch security is crucial to protect networks from unauthorized access and potential attacks. Enable port security features,



## Data Center Design: Basic 3 Layers, Core, Aggregation,

Data Center Basic Layered Design of Core, Aggregation, and Access The data center network design is based on a proven layered approach, which

## Switch Security: The Silent Guardian of Your Network

Network switches are critical for data flow, but their security is often overlooked. This article delves into why switch security is vital, explores key



## Contact Us

---

For datasheets, pricing, or custom high-speed optical interconnect solutions, please visit:  
<https://www.syropy.com.pl>