

# Core Switch Penetration





## Core Switch Penetration

---

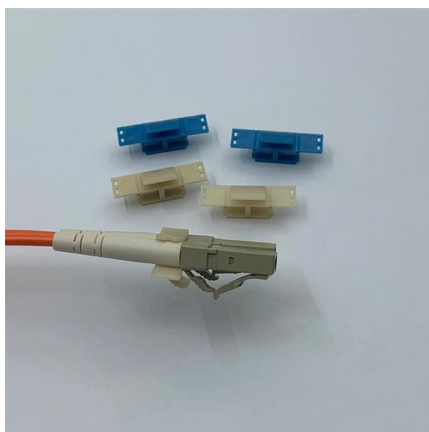


### What is a Core Switch , Functions and Difference over Normal Switch

What is a core switch and how it works? This article builds the basics of this kind of switch for the ones who don't know anything about it. What is a Core Switch? It is a powerful

### What Is a Core Switch?

Unlike access or distribution switches, a core switch is optimized for Layer 3 performance, modular scalability, and redundancy. In smaller networks, it may be combined with the distribution layer in a



### Was ist ein Core Switch? Grundlagen & Vorteile

Ein Core Switch ist ein leistungsstarkes Netzwerkgerät, das dafür zuständig ist, den Datenverkehr in Ihrem Unternehmen zentral zu verwalten und zu verteilen. Er ist das Herzstück Ihres Netzwerks,

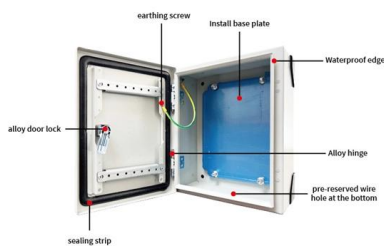
### Core Impact's Rapid Penetration Tests , Core Security

Core Impact's Rapid Penetration Tests (RPTs) are intuitive wizards that enable testers to swiftly discover, test, and report in just a few simple steps. By



### What is a Core Switch?

Spread the loveA core switch is a crucial component of a network infrastructure that serves as the backbone of a network. It's a high-performance switch that provides



### What Is a Core Switch in Networking?

Unlike access switches, which connect directly to end-user devices, the core switch focuses on aggregating and routing traffic between other switches, minimizing latency and maximizing throughput.



### What Is a Core Switch?

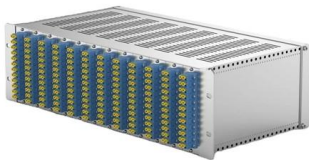
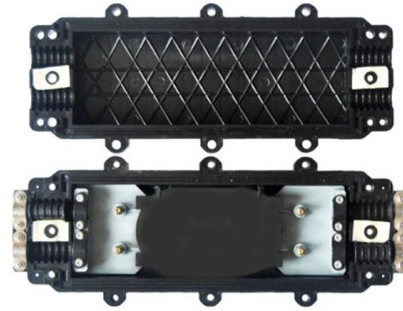
A core switch is the backbone of a large-scale network, designed to handle massive volumes of traffic with ultra-low latency and maximum reliability. Sitting at the top of the hierarchical model, core





### Access VS Distribution VS Core Switch

Distribution Switch -> Needed in medium-to-large networks where multiple access switches must be aggregated and routed. Core Switch ->



### Features and Applications of Core Switches

Core Switches possess high-performance forwarding capabilities, supporting high-throughput data transmission to ensure rapid data transfer across the network, meeting large enterprise network

### Access Switch vs. Core Switch

What's the difference between Access Switch and Core Switch? Access switches are typically used to connect end devices such as computers, printers, and IP ph



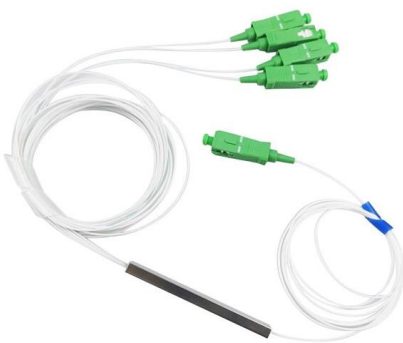
### Methodology Test Cycle

Induce network disruptions at each layer (see Network Disruption Test Cases, page 2-1) Scale control-plane peers and routes for both unicast and multicast routing at the core layer Scale the number of



## Introduction to Core Switch Configuration

In this switching, transmission is determined not only by MAC address (layer 2 bridge) or source/destination address (layer 3 routing), but also by TCP/UDP (layer 4) using port Numbers that



## Understanding Core Switch: What It Is and How to Choose the

By taking these considerations into account, you can make an informed decision when selecting a core switch that aligns with your network's demands and future growth.

## Core Switch

The ToR switches are electronic packet switches while the core switches are a combination of optical and electronic switches. The electronic switches are used for all to all communication among pods,



## Core Switch vs Access Switch , Definitions and Key Differences

This article focuses on the hierarchical internetworking and core switch vs access switch differences. We also discussed the core switches type and built a basic understanding of how a



## Core Switches: The Pillar of Network Infrastructure

Get a closer look at core switches: the nerve centers of network infrastructure that enhance performance and facilitate growth.



### Core Switch vs. Distribution Switch vs. Access Switch

Comprehensive guide to Core, Distribution, and Access Switches. Roles in the network and important parameters explained.

### Differences Between the Core Switch and Normal

A core switch is not a type of switch, but a switch placed at the core layer (the backbone of the network). Generally, large-scale enterprise networks



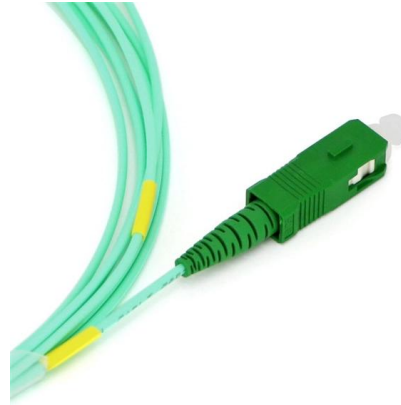
### Was ist ein Core Switch? Grundlagen & Vorteile

Core Switch-Umgebungen im Überblick: Wie zentralisierte Netzwerke Stabilität, Geschwindigkeit und Effizienz für Unternehmen steigern können.



## Network Security and Penetration Testing , Core Security

Penetration Testing Pen testers focus on exploiting and uncovering vulnerabilities on different types of networks, associated devices like routers and switches, and network hosts.



## Core Switch Explained: Key Functions and Benefits

Unlike edge switches, core switches are the network's backbone, improving data routing and performance. This is essential for businesses, data centers, and ISPs that need fast, reliable

## SMB Network Design: Core vs. Distribution vs. Access Switches

Don't overspend on network hardware. Our expert guide explains core, distribution, and access switches so you can design the right network for your SMB.



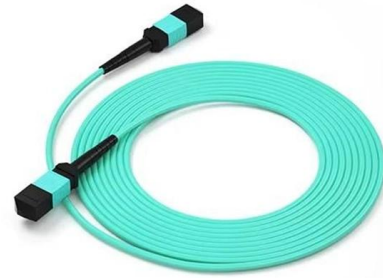
## What Is a Core Switch? Network Backbone Architecture Guide

Discover what a core switch does in a 3-tier network model. Learn about ASIC routing, collapsed core vs dedicated core topologies, and SMB sizing guides.



## Penetration Pricing: Core Pricing Strategy Guide

Explore Core Pricing Strategy with Penetration Pricing: launch with low prices to win market share fast, build awareness, and drive adoption.



## Understanding the Core Switch: Key Differences and Uses

Explore the core switch's role as the backbone of your network. Discover key differences, uses, and insights into layer 3 core switch technology.

## Core Impact Datasheet , Penetration Security Testing

Core Impact empowers organizations to proactively minimize risk and protect critical assets by using the same techniques as today's threat actors to assess their infrastructure's security posture. This



## Access vs. Distribution vs. Core Switch Comparison Guide

Compare Access, Distribution, and Core switches: understand their roles, features, and differences in enterprise network hierarchy. Make informed network design decisions.

In the realm of network engineering, understanding core switches is critical for ensuring efficient data handling and seamless communications. Core switches



### Core switch definition - Glossary , NordVPN

A core switch is the primary switch in a network, built to transfer data fast. A core switch sits at the top of a network's structure.

### Core Switch vs Normal Switch: Key Differences Explained

What are the Differences Between the Core Switch and Normal Switch? By fiberlife. Posted on January 17, 2025 Networking infrastructures rely



## Contact Us

---

For datasheets, pricing, or custom high-speed optical interconnect solutions, please visit:  
<https://www.syropy.com.pl>