

Core Switch M7800C





Core Switch M7800C

Ruijie Networks RG-S7808C Series Quick Installation Manual



Page 4: Product Overview Launched by Ruijie independently, RG-S7808C series next generation core switches adopt the Crossbar architecture. RG-S7808C series switches support dual supervisor

Ruijie RG-S7800C Series Hardware Installation And

View and Download Ruijie RG-S7800C Series hardware installation and reference manual online. RG-S7800C Series switch pdf manual download.



Ruijie RG-S7800C Series

Ruijie RG-S7800C Core Switch Series is specially designed for next-gen integrated network. Implementing advanced RGOS11.X operating system and VSU/VSD virtualization technologies, the

RG-S7800C Series Core Switches

Ruijie RG-S7800C Series Core Switch is specially designed for next-gen integrated network. Implementing advanced RGOS11.X operating system and VSU/VSD virtualization technologies, the



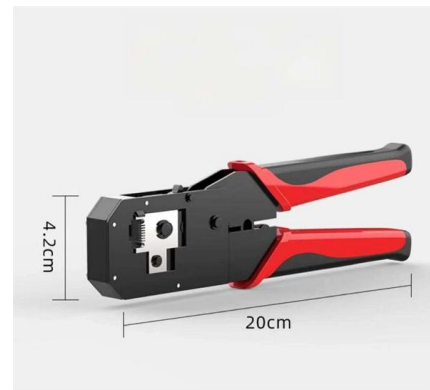
M7800C-CM Ruijie S7808C high-performance first-generation main

M7800C-CM Ruijie S7808C high-performance first-generation main control engine Image accuracy is not guaranteed We source our product images from a third party data provider and as such cannot



Ruijie RG-S7808C Series Hardware Installation And Reference Manual

1 Product Overview Launched by Ruijie independently, RG-S7808C series next generation core switches adopt the crossbar architecture and support dual supervisor modules and power supply



RG-S7810C 10 RU Modular Campus Core Switch

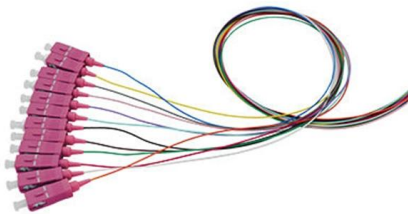
RG-S7810C 10 RU Modular Campus Core Switch Can be deployed in data centers, metropolis area networks, campus networks, or integrated scenarios of data centers and campus networks.



M7800C-CM, Ruijie S7800C Switch, High-



Deploy the Ruijie M7800C-CM high-performance engine for S7800C core



Ruijie RG-S7800C Series

Core Switch Series Datasheet Ruijie RG-S7800C Core Switch Series is specially designed for next-gen integrated network. Implementing advanced RGOS11.X operating system and VSU/VSD

Ruijie RG-S7800C-X Series Hardware Installation And

View and Download Ruijie RG-S7800C-X Series hardware installation and reference manual online. RG-S7800C-X Series switch pdf manual download. Also for: Rg



RG-S7800C Core Switch Series Datasheet 2020.8.24

Ruijie RG-S7800C Series Core Switch Series Datasheet Ruijie RG-S7800C Core Switch Series is specially designed for next-gen integrated network. Implementing advanced RGOSII.X



Ruijie M7800C-24GT24SFP4XS-EB - Ruijie Switches Price & Product

Configuration and management of the M7800C-24GT24SFP4XS-EB is made easy with an intuitive user interface. This switch supports various management protocols, including SNMP, RMON, and Web



Ruijie M7800C-CM Hochleistungs-Motormodul für S7800C-Schalter

Setzen Sie die Ruijie M7800C-CM Hochleistungs-Engine für S7800C Core-Switches ein, um das Routing, die Skalierbarkeit und die Zuverlässigkeit Ihres Unternehmensnetzwerks zu verbessern.

RUIJIE RG-S7808C: S7800C NEXT GEN 8 SLOT

Ruijie RG-S7800C Core Switch Series is specially designed for next-gen integrated network. Implementing advanced RGOS11.X operating system and VSU/VSD



Multi-service Core Switch

The RG-S7800C and RG-S7800C-X series switches, multi-service core switches released by Ruijie Networks for next-generation converged networks, integrate features of campus networks and data



RG-S7800C Series Switches Hardware Installation and Reference

1 1 Product Overview Launched by Ruijie independently, RG-S7800C series next generation core switches adopt the crossbar/FULLMESH architecture and support dual supervisor modules and



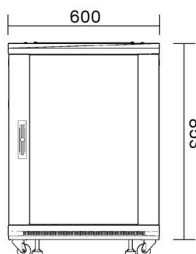
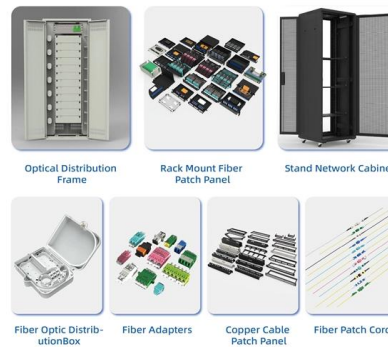
RG-S7800C Series

The RG-S7800C series switches are multi-service core switches released by Ruijie Networks for next-generation converged networks. The switches combine various features of campus networks and

Campus Switches RG-S7810C-X 10 RU Modular

Compact chassis design with a height of 10 RU improves cabinet space utilization. Eight line card slots support a wide range of cards that provide various port types,

An Extensive Library of Self-Developed Products



RG-S7800C Series Switches Hardware Installation and Reference

1 Product Overview Launched by Ruijie independently, RG-S7800C series next generation core switches adopt the crossbar/FULLMESH architecture and support dual supervisor modules and



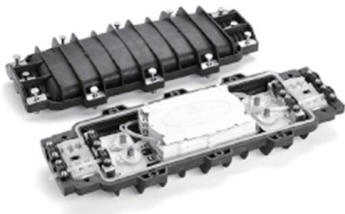
RG-S7800C Series Switches Hardware Installation and Reference

Launched by Ruijie independently, RG-S7800C series next generation core switches adopt the crossbar/FULLMESH architecture and support dual supervisor modules and power supply



Ruijie M7800C-24GT24SFP4XS-EA 24GE RJ45 24SFP

The M7800C-24GT24SFP4XS-EA belongs to the Ruijie Switches series and is a high-performance network switch designed for enterprise-level networking



Ruijie RG-S7800C Series Switches Quick Installation Guide V1

4.4 Installing External PoE Power Frame (Optional) er frame M78-PSE is an optional accessory for the RG-S7800C. See RG-S7800 Series Switch Installation and Reference Guide for de e.g., M7800C

- ✓ Slow Axis Aligned (0°) - for standard sensing applications
- ✓ Fast Axis Aligned (90°) - for special modulation applications
- ✓ 45° Axis Aligned - for depolarizer applications



RG-S7800C Series

Product Overview The RG-S7800C series switches, multi-service core switches released by Ruijie Networks for next-generation converged networks, integrate features of campus networks and data



Contact Us

For datasheets, pricing, or custom high-speed optical interconnect solutions, please visit:

<https://www.syropy.com.pl>