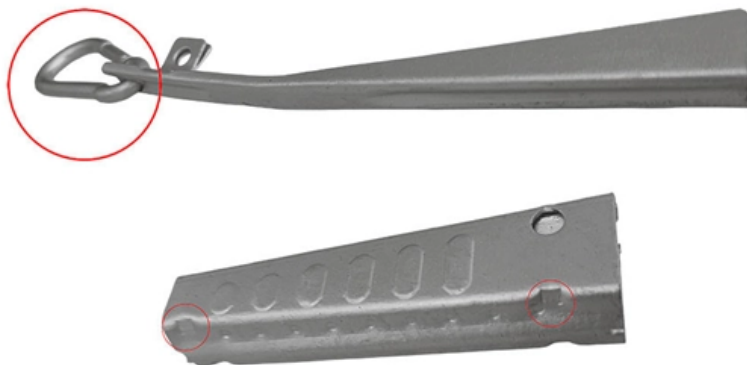


Core Switch 2 Network Segments





Core Switch 2 Network Segments



What Is a Core Switch in Networking?

What Is a Core Switch in Networking?
Understanding the Backbone of Your Network A core switch in networking serves as the high-capacity

Core layer , FortiSwitch 7.6.0 , Fortinet Document Library

With 8x100-GbE QSFP28 slots per FortiGate unit, it provides enough capacity to directly connect with 2x100-GbE ports to each of the two core FortiSwitch units at a nonstop forwarding capacity of up to



FS Community

Hier sollte eine Beschreibung angezeigt werden, diese Seite lässt dies jedoch nicht zu.

Understanding Core Switch: What It Is and How to

A core switch is not merely a type of switch but rather denotes the switch that operates at the core layer (the network's backbone). Positioned at the



What Is an Aggregation Switch and How to Choose?

So, what exactly is an aggregation switch, and how do you choose the right one? Let's examine it in detail. What Is an Aggregation Switch? An aggregation switch



Example for Configuring Communication Between Different Network

Access switches are layer 2 switches, and aggregation and core switches are Layer 3 switches. The user and server need to communicate with each other due to service requirements. Figure 5-17



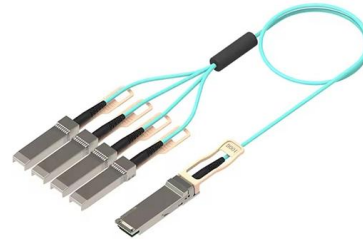
\$SILEX, the TSMC of the MEMS world, just IPO'd on Nasdaq

TSMC CoPoS enters small-volume trial production 2027, mass production 2028-2029. Samsung SEMCO glass core substrates targeting mass production 2027. Intel glass core substrates



LANCOM Tech Paper Two-Tier and Three-Tier Switch Architectures

Core switches represent the heart of the network and are the top layer of a three-tier network. With its high throughput, a core switch mainly handles non-blocking switching tasks on layer 2 (the data-link

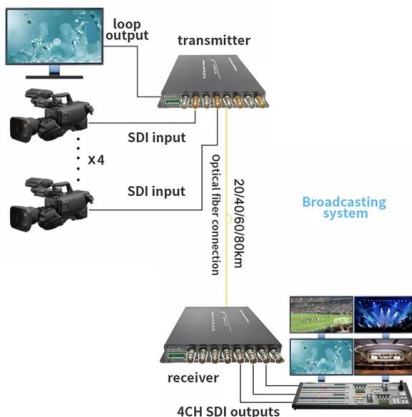


What Is a Core Switch?

Sitting at the top of the hierarchical model, core switches interconnect distribution layer switches and provide high-speed data transfer across network segments. Unlike access or distribution switches, a

Core Switch Explained: Key Functions and Benefits

In networking, a core switch is like the brain of the network's core layer. It handles high-capacity networks that are crucial for moving data over large areas. Located in the data center



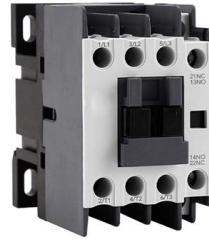
Core Switches: The Backbone of High-Speed Data Networks

Core switches form the backbone of large-scale networks, handling massive amounts of data traffic with high speed and reliability. Whether in a data center, enterprise, or ISP environment, core switches



Access, Distribution, and Core Layers Explained

This tutorial provides an overview of the access, distribution, and core layers and explains two-tier and three-tier campus LAN designs.



Can switches interconnect different network segments?

In network communication, the interconnection between different network segments is crucial. As one of the core equipments in the network, if the

SMB Network Design: Core vs. Distribution vs. Access Switches

Don't overspend on network hardware. Our expert guide explains core, distribution, and access switches so you can design the right network for your SMB.



Network Segmentation

I'm at the start of a project, of which we are using consultants to help redesign our network - we're looking to simplify where possible and introduce some level of segmentation.



Understanding the Core Switch: Key Differences and Uses

As core switches provide the utmost performance and reliability to the whole network, the distribution switches provide efficient routing, traffic



Core network components , Microsoft Learn

To successfully deploy a core network, you must deploy network hardware, including the following: Ethernet, Fast Ethernet, or Gigabyte Ethernet

LANCOM Tech Paper Two-Tier and Three-Tier Switch Architectures

Two-tier and three-tier switch architectures
When structuring the logical architecture of an enterprise network, decisive factors include the efficient and secure transport of data, high scalability, and high



What is Core Switch and How to Choose?

Discover what a core switch is and learn how to choose the right one for your network. Explore key features in selecting a core layer switch. Make



Layer 2 or 3? Choose the right switch for optimal

Learn how to choose the right network switches for your enterprise. Explore Layer 2 and Layer 3 capabilities to optimize segmentation and enhance



Core, Aggregation, or Access Switches? Choose the

Discover the crucial differences between core, aggregation, and access switches. Find out which type can best transform your network's

Core layer , FortiSwitch 7.6.0 , Fortinet Document Library

The core layer is critical, yet very simple to design, and allows for network evolution quite easily. Point-to-point links are used between each element, and Fortinet recommends using the MCLAG and dual



Core Switch vs. Distribution Switch vs. Access Switch

There are different types of enterprise switches that perform various roles in these layer-based or hierarchical ethernet networks. This white paper introduces the

What is a Core Switch



Network aggregation switches, on the other hand, connect many networks over a single link. As a result, it increases the network's bandwidth. This article explained the question of what is



What is a Core Switch

The access layer is the section of the network that directly deals with users' network connections or access, while the distribution layer or aggregation layer is the part of the network that

L3 or L2 Link between Core Switches

We are planning to introduce distribution switches to migrate the L2 boundary to those switches instead of the CORE ones, so the vlans will be expanded to those distribution switches (L2



What is network segmentation?

What are the different types of segmentation? Macro-segmentation: The most common form of network segmentation, macro-segmentation is the practice of



What Is a Core Switch in a Network?

Define the core switch--the central, high-speed backbone required for aggregating and routing massive volumes of enterprise network traffic.



What is a Core Switch?

What is a Core Switch? A Deep Dive A core switch is the backbone of a network, providing high-speed switching for data packets between different network segments; essentially, it's

Contact Us

For datasheets, pricing, or custom high-speed optical interconnect solutions, please visit:
<https://www.syropy.com.pl>