

# **Core Switch 1600**





## Core Switch 1600

---



### Got one of the 1600s with all their cores unlocked and

it's not intentionally unlocked, there was a batch of 1600 and 1600xs all made in the same week that didn't have their cores disabled. you would have to be extremely lucky to get one.

### AIS1600 series

Pre-qualified 1G/10G/25G/40G/100G/400G/800G optics for switches



### TJ1600 Core Switch , High-Capacity Optical Switching

TJ1600 Core Switch is one of the world's largest disaggregated multi-terabit optical switches designed for building high-capacity optical backbone networks, 5G core networks and interconnecting hyper

### Coreswitch - Wikipedia

Ein Coreswitch ist ein verbindendes Gerät in Computer-Netzwerken. Coreswitches sind meist sehr leistungsfähige Switches, die das Rückgrat (Backbone) eines



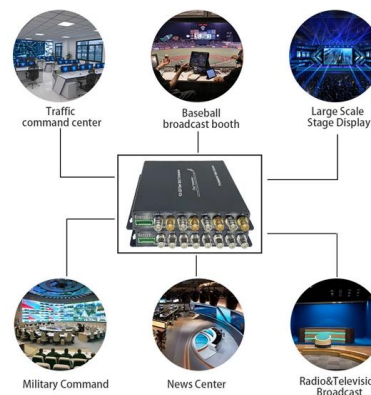
### Was ist ein Core-Switch? Funktionen und Bedeutung

Erfahren Sie, was ein Core-Switch ist und wie er die zentrale Rolle in einem Unternehmensnetzwerk spielt. Unsere Erklärung bietet Einblicke in die



### CloudEngine S16700 Series Switches Product Description

CloudEngine S16700 series switches (S16700 for short) are Huawei's next-generation modular core switches designed for high-end campus networks in the all-wireless era. S16700 series switches



### Was ist ein Core Switch? Grundlagen & Vorteile

Ein Core Switch ist ein leistungsstarkes Netzwerkgerät, das dafür zuständig ist, den Datenverkehr in Ihrem Unternehmen zentral zu verwalten und





## What is a Core Switch , Functions and Difference over Normal Switch

What is a core switch and how it works? This article builds the basics of this kind of switch for the ones who don't know anything about it. What is a Core Switch? It is a powerful



## Shop 1600 AMP Transfer Switches from General Power

Find high-performance 1600 AMP transfer switches designed for seamless power transitions and maximum reliability. Shop now at General Power



## What Is a Core Switch in a Network?

Define the core switch--the central, high-speed backbone required for aggregating and routing massive volumes of enterprise network traffic.



## Campus LAN Core and Distribution Switches

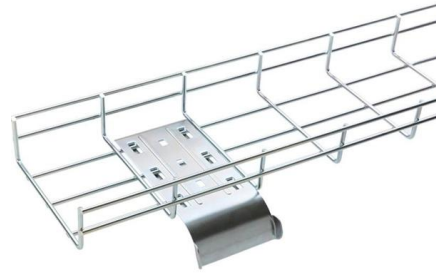
Cisco Catalyst and Meraki Campus LAN core and distribution switches are scalable, secure network switches with exceptional intelligence.





## Upgrading to Ryzen 5 5600 from Ryzen 5 1600: How

This is a benchmark session, as usual, where we'll be taking an old Ryzen 5 1600 system and upgrading it with the Ryzen 5 5600 to see what's what



## HP ProCurve Switch 1600M Installation Manual

View and Download HP ProCurve Switch 1600M installation manual online. ProCurve Switch 1600M switch pdf manual download. Also for: Procurve 1600m, Procurve 2400m.

## What is Core Switch and How to Choose?

Discover what a core switch is and learn how to choose the right one for your network. Explore key features in selecting a core layer switch. Make



MTP MPO SC-Type Fiber Adapter



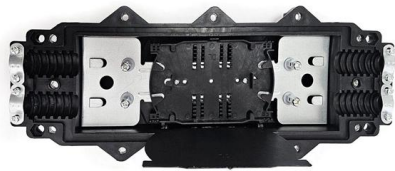
## Cisco Catalyst 9600 Series Switches

Catalyst 9600 Series switches offer a more secure experience and bring exceptional automation, analytics, speed, and scale to your access network.



### Split Core CT 1600:5 with 6 I.D.

Industrial current transformer 1600:5 designed for ease of installation without the need for system shutdown. Standard 5-Amp secondary for use with energy



### Understanding Core Switch: What It Is and How to

In the realm of system networking, three key types of switches are frequently mentioned: access switches, aggregation switches, and core switches.

### Core und Access Switche

Die vier Switche sind gestacked. An diese vier Core-Switche sind 10 Layer-2 Access Switche via Kupfer und Glas angeschlossen. Alle Ports der Core-Switche bis auf die Stack-Ports sind



### 1600 Amp Transfer Switches

### Ryzen 5 1600 Review

Ryzen 5 1600 brings six cores and twelve threads to the lowest price point in the desktop market, an example of the inherent value of its unlocked



Steadypower offers quality 1600 Amp Manual and Automatic Transfer Switches from Asco, Boltswitch, Power Assemblies, and Thomson. Low Prices & Expert



### **Ethernet Routing Switch 1600 Series User Manual , Manualzz**

This user manual provides instructions for installing and using Device Manager with the Nortel Ethernet Routing Switch 1600 Series, including configuration and management.

### **AIS1600 series**

Industry Grade WIFI built for the Enterprise and scaled environments Pre-qualified 1G/10G/25G/40G/100G/400G/800G optics for switches The high-performance



### **Ryzen 5 1600 (8 Cores) Specs, Cores & Cache , AMD Zen (17h gen1)**

Full hardware specifications for the Ryzen 5 1600 (8 Cores). Detailed look at core/thread counts, L3 cache, and silicon stepping for this Zen (17h gen1) processor.

### **Drivers and Support for Processors and**

Download drivers and software for AMD products -- includes Windows and Linux support, auto-detect tools & detailed guides for installation.



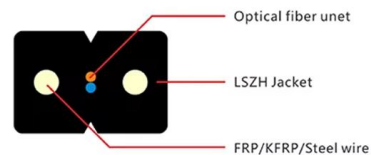
### Unterschiede zwischen dem Core-Switch und dem

Der sogenannte Core-Switch ist für die Netzwerkarchitektur. Wenn es sich um ein kleines lokales Netzwerk mit mehreren Computern handelt, kann ein



### Core Switch vs. Distribution Switch vs. Access Switch

These data switches are responsible for routing and data switching at the core layer of the network. The data routed and switched by the core switch is carried



### Edgecore Networks Sets New Benchmark for AI

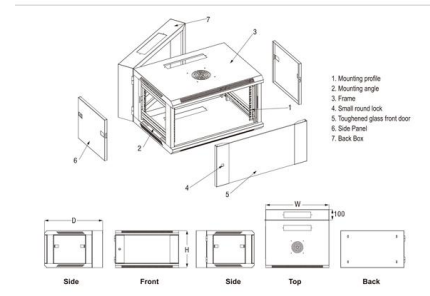
Edgecore's new 102.4T data center switch portfolio provides the foundation for these demanding environments, offering the industry's highest





## Was ist ein Core Switch? Grundlagen & Vorteile

Core Switch-Umgebungen im Überblick: Wie zentralisierte Netzwerke Stabilität, Geschwindigkeit und Effizienz für Unternehmen steigern können.



## Contact Us

For datasheets, pricing, or custom high-speed optical interconnect solutions, please visit:  
<https://www.syropy.com.pl>