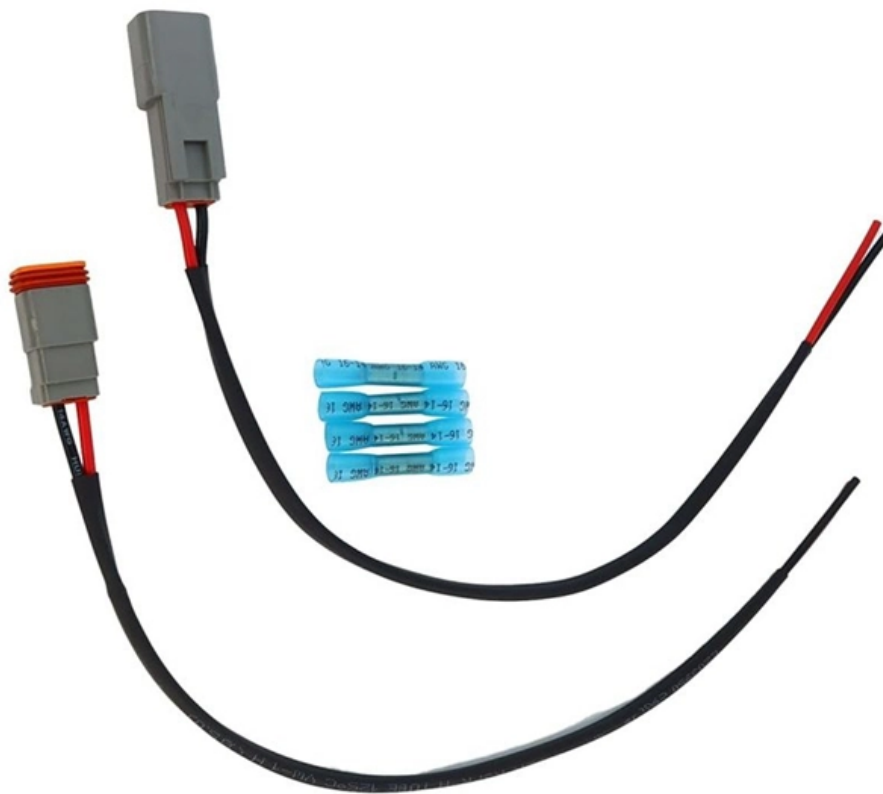


Core Access Switch Conflict





Core Access Switch Conflict



Best practices when configuring an Access switch stack to Core

Currently, the access switches physically connect to each other via fiber and only a few switches are directly connected to the Core stack. The firewall acts as the router. Only a few access switches

Core Switch vs Access Switch , Definitions and Key Differences

This article focuses on the hierarchical internetworking and core switch vs access switch differences. We also discussed the core switches type and built a basic understanding of how a

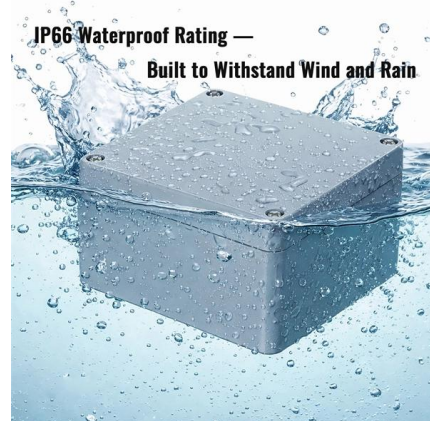


SMB Network Design: Core vs. Distribution vs. Access Switches

The critical difference between a core, distribution, and access switch lies in its designated role within the three-tier network architecture. Choosing the wrong switch for the job is the single

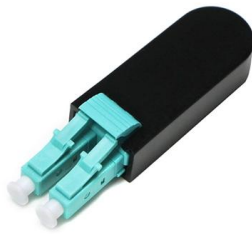
Access VS Distribution VS Core Switch

? Key Differences Access vs Edge: Access = connects internal end devices. Edge = connects the internal network to the external WAN/Internet.



What's the difference between core switch and access

Understanding the differences between a core switch and an access switch can help to ensure efficient network operation.



Core und Access Switch

Direkt auf den Access-Switchen, damit die Pakete schon da verworfen werden oder auf dem Core-Stack oder überall? Wenn auf dem Core-Stack, wäre dann nicht eine Gefahr vorhanden,



Access Switch vs. Core Switch

Access switches provide connectivity to end-user devices within a LAN, while core switches route data between different networks. Understanding the differences and similarities between access switches





Not able to reach VLAN between access and core switch , Comware

I have an access point plugged into port 38 on an Access Switch that is not able to reach DHCP on the network. I set up a VLAN 128 on the access switch and there is a matching VLAN 128 on the core



Core Switch vs Access Switch

Core switch vs access switch comparison. Learn the differences in network design, performance, scalability, and which switch is best for your setup.

IP Address Conflict

Start a conversation Cisco Community Technology and Support Networking Switching IP Address Conflict - possibly from 6509 Core Switch?



Understanding the Hierarchical Switch Layers: Access

The three-tier switch hierarchy -- Access, Distribution, and Core -- is not just a technical blueprint, but a strategic decision-making framework for IT



Core, Aggregation, or Access Switches? Choose the Perfect Fits

Discover the crucial differences between core, aggregation, and access switches. Find out which type can best transform your network's performance in 2025.

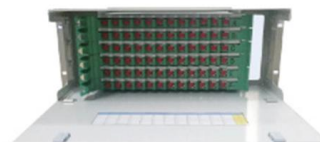


Is there any significant difference between a core switch, a

Is there any significant difference between a core switch, a distribution switch, and an access switch except for their speeds and place in the hierarchy?

Internet not reaching Core/Access Switch

Router has internet but Core Switch not picking, what i'm i missing? Router and Switch can ping each other Router Configs Router#sh run Building configuration Current configuration :



Core Switch & Access Switch Connections

Each access stack will have an ether channel link to each core switch providing a fast uplink between the stacks and some redundancy - if one access



Core Switch and Access Switch Crisis

We have a Huawei Core switch and a Dlink plug and play switch before the new Huawei Access switch was deployed. I discovered that everyone on the Core Switch and Dlink Switch is all



Understanding the Hierarchical Switch Layers: Access

Modern enterprise networks face two conflicting pressures: the need for agility and the demand for stability. The three-tier switch hierarchy -- Access,

Core Switch vs. Distribution Switch vs. Access Switch

Comprehensive guide to Core, Distribution, and Access Switches. Roles in the network and important parameters explained.

GAIN AN IN - DEPTH UNDERSTANDING OF



- ① LED DISPLAY PANEL
- ② PROTECTOR OPERATION BUTTONS
- ③ NEUTRAL WIRE OUTPUT TERMINAL
- ④ LIVE WIRE OUTPUT TERMINAL
- ⑤ WORKING CURRENT AND VOLTAGE INSTRUCTIONS
- ⑥ FLAME - RETARDANT SHELL



Best practices when configuring an Access switch stack to Core

Make sure the core switch is the root bridge, and enable portfast and BPDU guard on all access interfaces. Do your routing on the core switch, with an L3 transit to the firewall.



Was ist ein Core Switch? Grundlagen & Vorteile

Core Switch-Umgebungen im Überblick: Wie zentralisierte Netzwerke Stabilität, Geschwindigkeit und Effizienz für Unternehmen steigern können.



Cisco Core vs Access Switches: Key Differences

Compare Cisco core switches and access switches. Learn key differences for network design and performance.

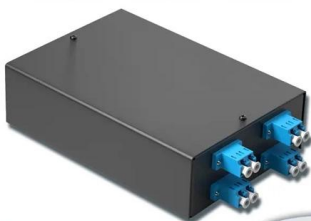
Core Switch and Access Switch configuration

HI TEAM, I have a 2 3850 core switch which is on HA and 2960x for my access switch, i required help on 2 things. 1) How to enable LLDP-MED/CDP on 2960 switch 2) Voice VLAN should



4-port 8-core LC wall-mounted fiber terminal box (empty frame)

Surface painted Scientific plate fiber Cold-rolled steel plate



Lifetime quality assurance

Free shipping

Customizable for telecommunication

Stay Informed with Our Newsletter

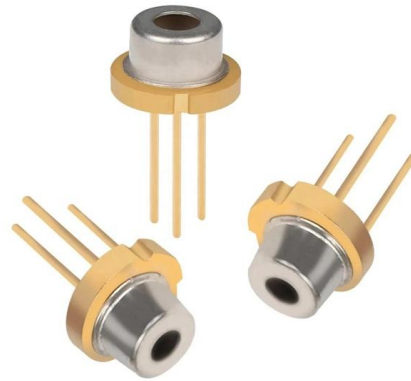
Call Now Stay Informed with Our Newsletter

SMB Switch: Access Switch vs Aggregation



Switch vs

There are so many kinds of switches in the market, which one should we buy? For most companies, they only need to buy SMB Switches. How do I



Understanding Core Switch: What It Is and How to

The core switch plays a pivotal role in managing substantial network traffic, necessitating a forwarding rate that typically outpaces that of access and

Core Switch vs Access Switch , Definitions and Key Differences

This post primarily examines the perplexing issue of choosing between a core switch, distribution switch, and access switch. The switches are one of the most important parts of the network.



Internet not reaching Core/Access Switch

when you ping 8.8.8.8 from 172.30.235.2 (the switch) and then issue the command 'show ip nat translation *' on the router, do you actually see an entry for 172.30.235.2 ?



Core, Aggregation, or Access Switches? Choose the

Discover the crucial differences between core, aggregation, and access switches. Find out which type can best transform your network's



Internet not reaching Core/Access Switch

Router has internet but Core Switch not picking, what i'm i missing? Router and Switch can ping each other Router Configs Router#sh run Building configuration Current configuration :

Contact Us

For datasheets, pricing, or custom high-speed optical interconnect solutions, please visit:
<https://www.syropy.com.pl>