

Copper requirements for AI servers





Overview

Current modeling indicates that each megawatt of AI data center capacity requires between 30 and 50 tonnes of copper. Modelling the specific requirements of AI-grade infrastructure suggests that \$12,000 per tonne is not a peak, but a new baseline necessitated by a persistent supply-demand gap and the sheer volume of red metal required to power the next generation of computing. AhaSignals uses AI data center copper demand as a physical confirmation test for AI capex, tech-index concentration, S&P 500 AI leadership, data-center power stress, and silver-versus-copper bottleneck claims. This page is research-only and does not forecast copper prices or rank copper stocks. A recent BloombergNEF (BNEF) report warns that: Copper supply gap could swell to 6 million tonnes by 2035 if demand keeps rising at this pace. Copper in the Age of AI analyzes the global outlook for copper supply and demand through 2040, focusing on copper's essential role in meeting the growing requirements of electrification, digitalization, and technologies such as AI, data centers, electric vehicles, and defense.



Copper requirements for AI servers



The big demand of copper in AI supply chain

Copper plays four critical roles in AI data center development. It enables rapid signal transmission between chips and systems, ensuring the lightning-fast data transfer that AI applications require. The

Rising Copper Demand from AI Data Centers: Supply

AI data centers typically use 2.5-3 times more copper per square foot than traditional data centers due to higher power requirements, advanced cooling



Copper Supply Chains 2025

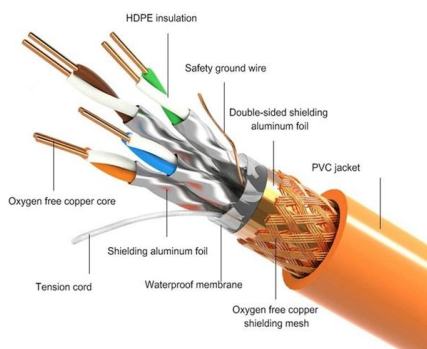
Every new AI server cluster translates into direct tonnage requirements for copper. The strain on copper supply chains 2025 is already

How to Integrate Playwright MCP for AI-Driven Test

Test automation has come a long way, from scripted flows to self-healing and now AI-driven testing. With the introduction of Model Context



PRODUCT DETAILS

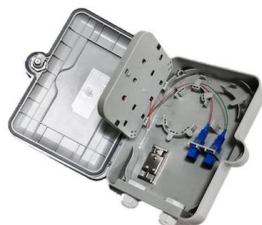


Powerful Supply Chain: High-Power Connector and Cable for AI server

AI servers feature high power for high-speed computing. When you finish building the AI server, there are still things to do -- a custom high-power connector and cable for the AI server. That

AI Hardware Requirements: A Comprehensive Guide

This guide covers AI hardware requirements in detail, including CPUs, CPU, TPUs and FPGAs, memory, and storage, and some additional demands.



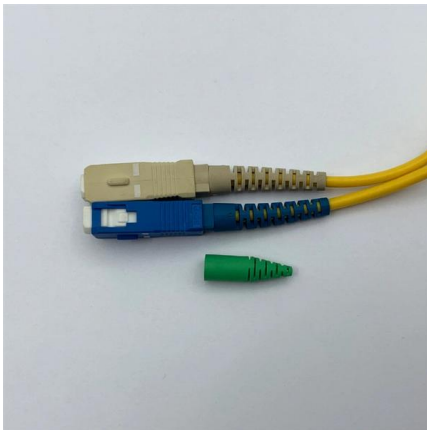
Data Centers Could Gobble Half A Million Tons Of

A conventional data center uses between 5,000 and 15,000 tons of copper. A hyperscale data center, on the other hand--the kind being built to run



AI Data Center Copper Shortage Is About to Get Much Worse

The AI data center copper shortage is accelerating as facilities require tens of thousands of tonnes each while global mining supply cannot keep pace.

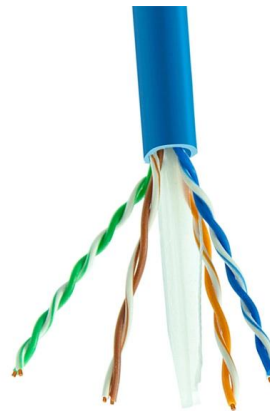


2026 Metal Market Forecast: Copper, Steel & AI Demand

2026 Metal Market Outlook: AI-driven copper demand, supply constraints, and strategic procurement guidance for purchasing managers & buyers.

AI data centers to drive 2% of global copper demand by

Global demand for critical minerals from data center development is set to rise significantly by 2030, compared to 2024 levels: 2% for copper 2% for



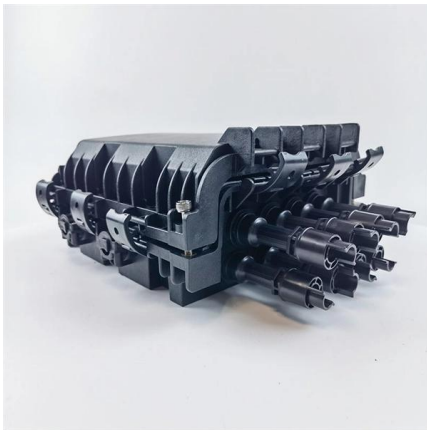
The Role of Critical Minerals in Clean Energy Transitions

Minerals are essential components in many of today's rapidly growing clean energy technologies - from wind turbines and electricity networks to electric



AI Data Center Copper Demand 2026: Power Grid, Data Centers,

Research-only AI data center copper demand map: how AI infrastructure increases copper demand through power delivery, transformers, switchgear, cooling, grid expansion, silver



AI Driving Copper Demand Surge in Data Centers

Why Does AI Increase Copper Demand in Data Centers? Power Distribution Requirements The power infrastructure needs for AI data centers

Copper in AI data centers

In AI data centers, copper plays a critical role in networking infrastructure by enabling high-speed data transmission and connectivity between servers, switches, and storage systems essential for AI



AI's Hunger For Copper

AI-intensive servers generate substantial heat, making advanced cooling infrastructure non-negotiable. Copper's high thermal conductivity makes it



Could copper prices continue rising: What is really driving copper

Copper prices are soaring aggressively in 2026 as copper futures smash record highs above \$14,000 per ton and COMEX copper crosses \$6.50 per pound. The rally is no longer only

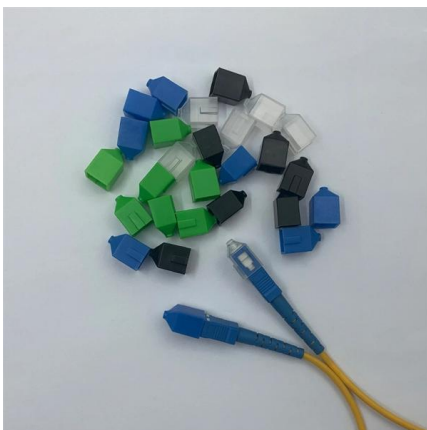


Modelling the AI Data Center Copper Demand: Why \$12,000/t is the

Modelling the specific requirements of AI-grade infrastructure suggests that \$12,000 per tonne is not a peak, but a new baseline necessitated by a persistent supply-demand gap and the

Copper in the Age of AI , S& P Global

In this vector, we examine the call on copper in two parts: the direct requirements for copper in data centers and their immediate environs, and the



Why AI Data Centers Are Becoming a Copper Bottleneck

As AI workloads scale, data centers are being designed with unprecedented power density, redundancy, and reliability requirements. These design choices are



The U.S. has enough copper to meet surging demand from AI data

These designs utilize copper for internal wiring, power distribution, and cooling systems within the modules, highlighting copper's critical role even in innovative data center architectures. Demand from



vresp

Hier sollte eine Beschreibung angezeigt werden, diese Seite lässt dies jedoch nicht zu.

Data Center DC Embraces 800V Power Shift

For AI, that is starting to approach 1 megawatt. At that scale, the energy losses, current levels, and copper requirements of AC-to-DC conversions



AI Data Centers and the Global Copper Shortage Crisis

AI-optimized data centers have an even higher demand for copper: higher-density racks and more powerful GPUs mean higher power and cooling requirements, increasing the amount of



Data Centers' Copper Hunger: How AI is Driving a

AI-ready data centers are changing the copper demand story. Unlike electric vehicles, which add demand gradually, these facilities need massive



KINJI Embedded Copper Coin PCB: High-Power Thermal

In high-power-density applications such as new energy vehicles (EVs), industrial IGBT modules, and high-performance computing (HPC) servers, the PCB's thermal management, current-carrying

AI PCB Design Considerations and Requirements Management

AI servers, GPU clusters, data center switches, and high-bandwidth memory systems are pushing PCB technology to unprecedented limits: Signal frequencies moving from 10Gbps to



Contact Us

For datasheets, pricing, or custom high-speed optical interconnect solutions, please visit:
<https://www.syropy.com.pl>