

Copper busbars installed on cable trays





Copper busbars installed on cable trays



Lighting Busbar

KY-S Busbars with an approx. 4 times faster assembly time compared to the cable tray; o Boltless, easy-to-install fixing structure, o Fast energy supply with output plugs, o Its modular

Step-by-Step Busbar Installation Guide , Artizono

To install a busbar in an electrical panel, follow these steps for a safe and efficient process. First, ensure you select the appropriate busbar material,



Busbar and Cable Channels - Barla Energy

Types of Cable Trays Cable trays are produced in various types to meet diverse needs. The selection of a cable tray depends on factors such as: - The number, diameter, and weight of the cables. - The

Copper for Busbars

The use of copper for the busbars to which these parts are connected therefore avoids contacts between dissimilar metals and the inherent jointing and corrosion problems associated with them.



DETAILS DISPLAY



Focus On Every Detail



01

Neat & Clean Layout



Cleaner arrangement of components, Easy to operate

How to Install and Process Busbars in Electrical Panels

To install busbars in electrical panels, begin by turning off the power to ensure safety. Select the appropriate busbar material, typically copper or aluminum, based on your current

Guide to Server Rack Copper Busbars & Grounding

Optimize your data center with roll-formed copper busbars and grounding channels for code-compliant, high-performance grounding.



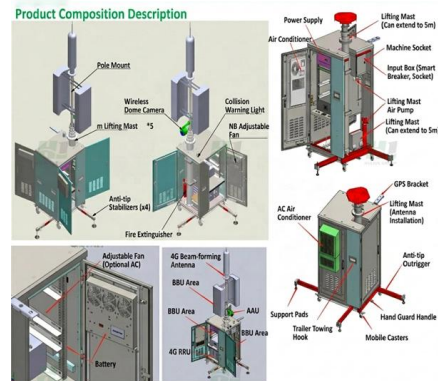
Four very important precautions for the installation of

Energy transport via cables and busbars First, to be clear, there are dozen of concerns and precautions you should be aware of when we talk about



Cables vs. Busbars: Making the Right Choice in Power Distribution

? Installation: Installing cables often requires routing through conduits, trays, walls, or underground paths, making the process more labor-intensive and time-consuming compared to



How to Install Bus Bars in Electrical Panels: A Step-by-Step Guide

Installing bus bars in electrical panels is a crucial step in ensuring efficient power distribution, safety, and ease of maintenance. By following the step-by-step guide outlined above, you can confidently install

Dabline Busbar Istanbul - Reliable Power Distribution , europages

Discover Dabline Busbar solutions in Istanbul for raised floor energy distribution. Source underfloor busbar trunking systems from trusted suppliers.

Wall Mount Cabinet Server Racks



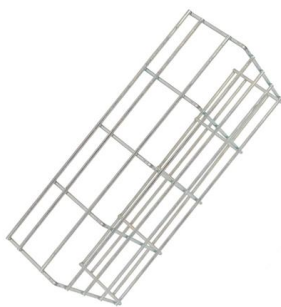
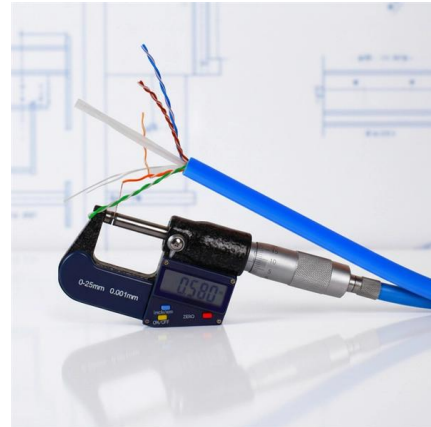
Copper for Busbars

For busbar systems, the maximum working current is determined primarily by the maximum tolerable working temperature, which is, in turn,



Step-by-Step Busbar Installation Guide , Artizono

Imagine transforming a chaotic web of electrical connections into a streamlined, efficient powerhouse. Busbars are the unsung heroes of electrical

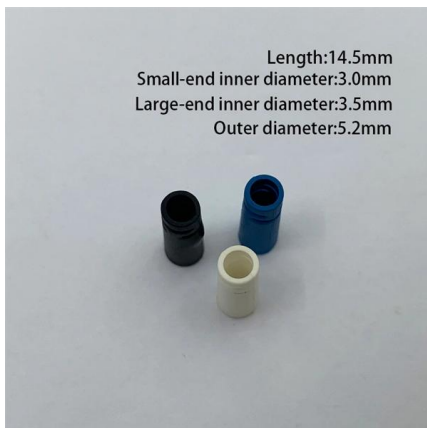


Copper for Busbars

First issued in 1936, in this edition the calculation of current-carrying capacity has been greatly simplified by the provision of exact formulae for some common

Busbar vs Cable Tray: Power Distribution Explained

Discover key differences between busbars and cable trays in electrical systems. Fuspan offers IEC-certified, export-ready busbar solutions for industrial use.



Copper for busbars , PDF

The document 'Copper for Busbars' is a comprehensive guide issued by the Copper Development Association, which outlines design and installation practices for



What are bus bars? Bus bars, also known as power rails or busbars, are components, usually made of copper and aluminium, that are a very



Busbar vs Cable Tray: Power Distribution Explained , Fuspan

Discover the differences between busbar systems and cable trays for efficient power distribution solutions. Understanding busbars is crucial for efficient power distribution.

Copper Busbar: The Ultimate Guide to Applications,

Copper busbars simplify electrical setups, making them easier to install and maintain compared to cable-based systems. Their rigid structure



Copper Busbars: Design & Installation Guidance

Comprehensive guide on copper busbar design, installation, current capacity, lifecycle costing, and short-circuit protection. Ideal for electrical engineers.





Cable Tray , EAE Electric , Medium & heavy duty cable

EAE Electric cable tray systems have been designed to and easy to install. Supply a complete range of cable tray including medium & heavy duty!



Contact Us

For datasheets, pricing, or custom high-speed optical interconnect solutions, please visit:

<https://www.syropy.com.pl>