

# **Copper busbar distribution box housing**





## Copper busbar distribution box housing

---



### **Copper Busbar: The Ultimate Guide to Applications,**

Introduction In the world of electrical engineering and power distribution, copper busbars play a crucial role. These conductive bars, widely

### **unibar M Busbar Trunking System Manual**

An energy distribution system must not only be flexible and cost-efficient, but also space-saving, safe and offer a long service life. unibar M Busbar Trunking Systems from Hager are just that: efficient



### **Flexible tiered busbar enclosure for high current application**

This high-current enclosure offers enhanced flexibility using a range of tinned copper busbars mounted in a tiered arrangement. The SX busbar provides termination

### **BR01701001U\_PowerXpert\_Busbar\_Brochure\_EN**

Power XpertT Busbar XP trunking utilises aluminium-extruded housing bringing significant weight saving advantages whilst ensuring that strength and rigidity is enhanced.



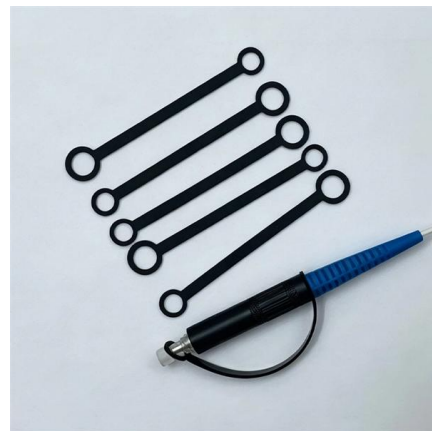
### **Custom Copper Busbar Cabinets & Control Boxes:**

Discover how E-abel designs custom copper busbar cabinets and control boxes as an integrated power distribution control system. Learn how this



### **Comprehensive Guide to Busbars: Types, Design,**

Explore the comprehensive guide to PV Solar Combiner Boxes: Learn about types, components, selection criteria, installation best practices,



### **Busbar Systems in India , Types, Advantages**

Discover what a busbar system is and its role in efficient power distribution. Learn about copper and aluminium busbar types, designs, advantages, and industrial





## STARLINE Copper Busbar Distribution Chamber Manufacturers

With a team of highly trained engineers and their expertise, MOTI Enterprise is proud to offer the modern day Copper Busbar Distribution Chamber System specially designed to last longer and perform



### What is Busbar? Types, Advantages (2026 Updated Guide)

Busbars are metal strips or bars made of copper or aluminum. They are key components in electrical systems that can efficiently collect and distribute

### Busbar with Plastic Distribution Box 3p Bus Bar Circuit

Q: Is Busbar with Plastic Distribution Box 3p Bus Bar Circuit Breaker Copper Busbar 3 pole Pin recyclable? A: Absolutely, copper is one of the most recycled metals



### Busbar box

KS 240/12 terminal for direct connection on busbar copper/aluminium conductor 35 - 240 mm<sup>2</sup>





## Distribution Blocks & Busbars , Automotive, Marine,

While these terms are often used interchangeably, they serve slightly different roles: · Busbars: Typically consist of a solid metal bar (often tin-plated copper) with



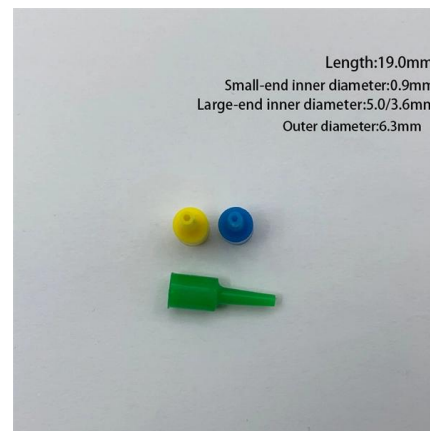
## Busbar Chambers , Safe & Scalable Power Distribution , CEF



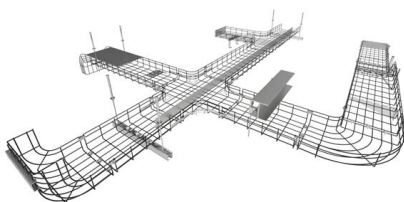
Designed to handle high current loads safely, these systems use copper or aluminium conductors housed within a protective enclosure to streamline installation and minimise cable clutter.

## 5/16" (M8) Stud 400A Dual Row Bus Bar Box

This 400A dual row bus bar box features a 6mm thick nickel-plated copper construction with four 5/16" (M8) studs, ensuring reliable high-current power



## Busbar systems



RiLine busbar systems for individual switchgear and controlgear. Complete solutions up to 1600 A for AC or DC applications. 3-pole, tool-free mounting, short circuit



### 10kV Copper Busbar Cable Branch Box

The 10kV copper busbar cable branching box is a connection device in high-voltage distribution systems that branches a main cable into multiple circuits.



### HX Range Catalogue

HX utilises a sandwich arrangement of individually insulated Copper (HXC) busbars (using a specialist epoxy resin coating) which are contained within a unique two piece, IP55 rated, Aluminium

### What Is A Busbar - Power Distribution In Electrical

A busbar is a rigid conductor, typically made of copper or aluminum, that serves as a common connection point for multiple circuits within electrical enclosures. It



### Busbar System , KX electrical busbar systems , EAE

Busbar System (400A - 6300A) E-Line KX Series Compact Busbar Systems are used in horizontal and vertical energy distribution and transmission in Bolt-on



### How to install a copper busbar in the distribution board.

How to install a copper busbar in the distribution board. Daily work experience 30.1K subscribers  
Subscribe



### BUSBAR DISTRIBUTION BOX

Material of Busbar. == Electrolytic Grade Aluminum grade 19501 as per IS 5082. == Electrolytic Grade Copper with Purity of 99.5%

### How to Install Bus Bars in Electrical Panels: A Step-by-Step Guide

Installing bus bars in electrical panels is a crucial step in ensuring efficient power distribution, safety, and ease of maintenance. By following the step-by-step guide outlined above, you can confidently install



### Busbars 101: A Comprehensive Guide

Introduction to Busbars in Electrical Systems  
Busbars are essential components in electrical power systems, designed to distribute power efficiently within switchgear, panel boards, and distribution



## Contact Us

---

For datasheets, pricing, or custom high-speed optical interconnect solutions, please visit:

<https://www.syropy.com.pl>